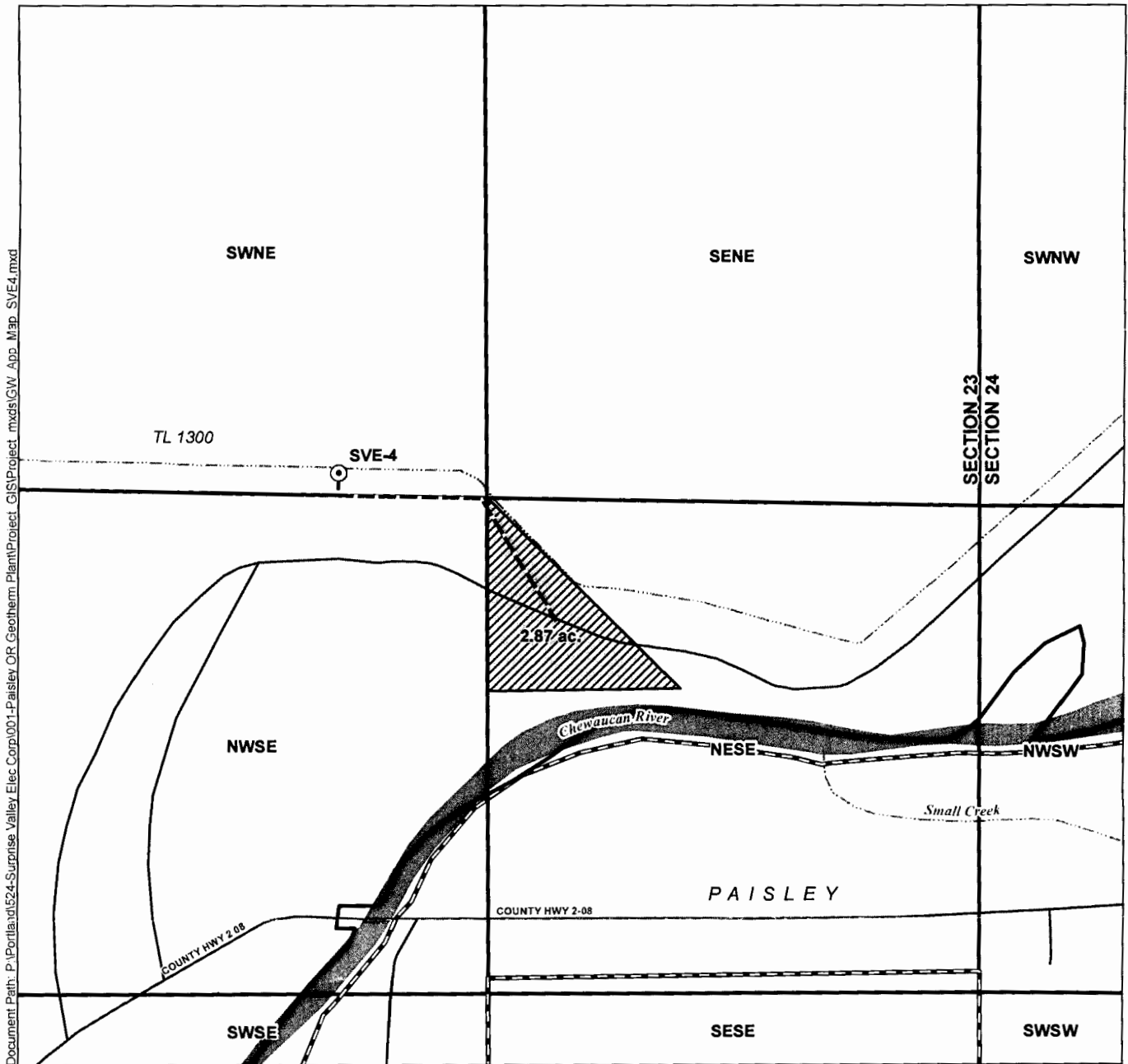


Application for a Permit to Use Groundwater Place of Use/Point of Appropriation Map

Application in the Name of Surprise Valley Electrification Corporation

Section 23, Township 33 South, Range 18 East (W.M.)



Document Path: P:\Portland\624-Surprise Valley Elec Corp\001-Paisley OR Geoterm Plant\Project GIS\Project mxd\GW App Map_SVE4.mxd

LEGEND

- Point of Appropriation (POA)
- Place of Use (POU)
- Distribution Pipeline
- Paisley City Limits
- Roads
- Watercourses
- Waterbodies

POA Location Description

SVE-4
Located 60 feet North and 1,680 feet West from the E1/4 corner of Section 23, Township 33 South, Range 18 East (W.M.)

G-17870

RECEIVED

SEP 09 2014

WATER RESOURCES DEPT
SALEM, OREGON

Disclaimer

This map was prepared for the purpose of identifying the location of a water right only and it is not intended to provide legal dimensions or location of property ownership lines.

Map Notes

Date: July 24, 2014
Data Sources: OWRD, USGS, US BLM, ESRI
Prepared By: GSI Water Solutions, Inc.

