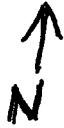


THIS MAP WAS PREPARED FOR
ASSESSMENT PURPOSE ONLY

SECTION 01 T.40S. R.13E. WM.
KLAMATH COUNTY
1"=400'

40 13 01



NE corner
Section 2
Smith well
NE 1/4 NE 1/4
Section 2, T40S,
R 13 E WM, 40 FT
South and 275 FT
West From The NE
Corner of Section 2.

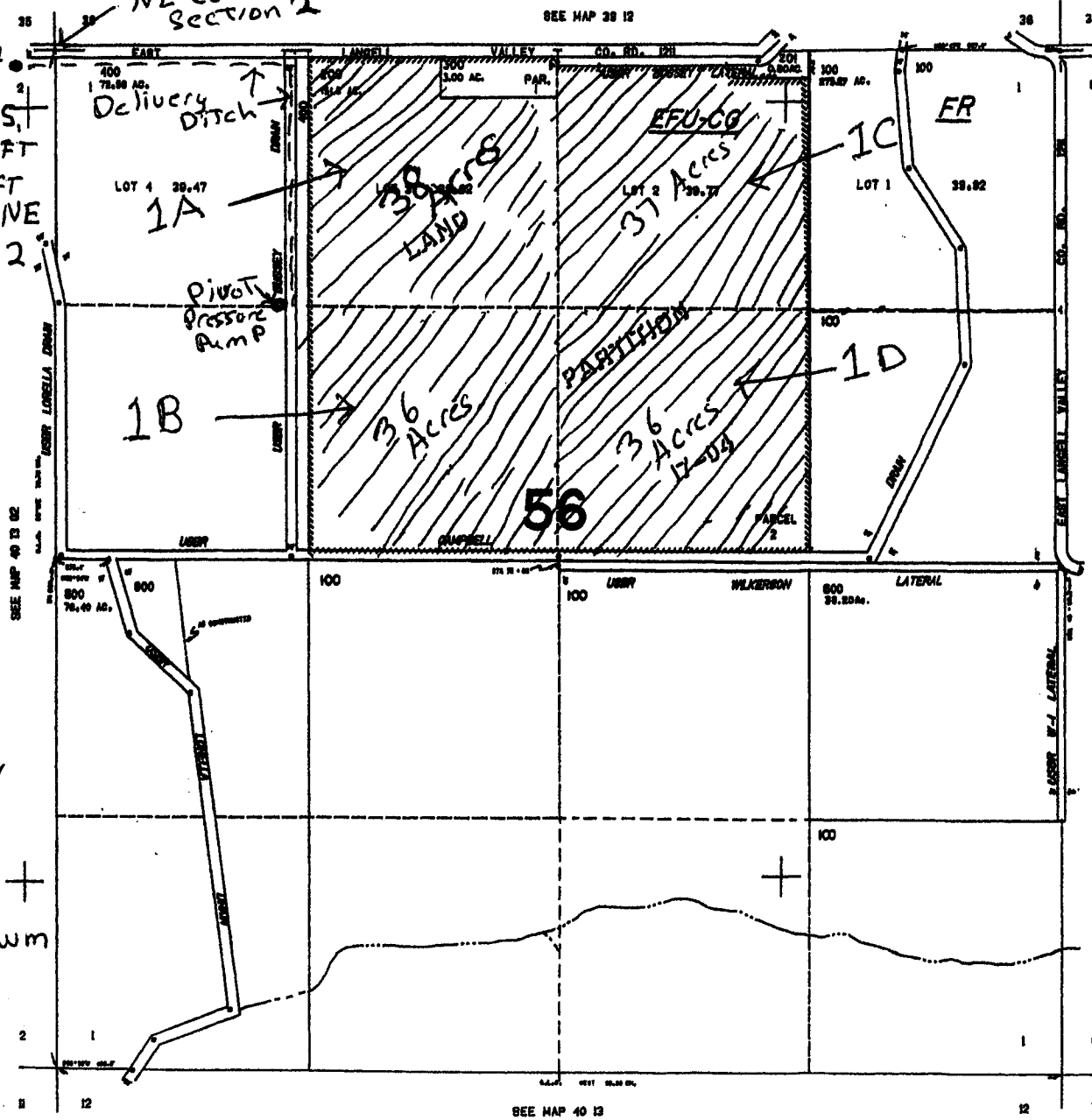
1A
NE 1/4 NW 1/4
Section 1

1B
SE 1/4 NW 1/4
Section 1

1C
NW 1/4 NE 1/4
Section 1

1D
SW 1/4 NE 1/4
Section 1

All are in +
T40S R13E Wm
Section 1 Tax
Lot 200



SEE MAP 40 14 6

G-1008

RECEIVED BY OWRD

MAY 18 2015

SALEM, OR

40 13 01