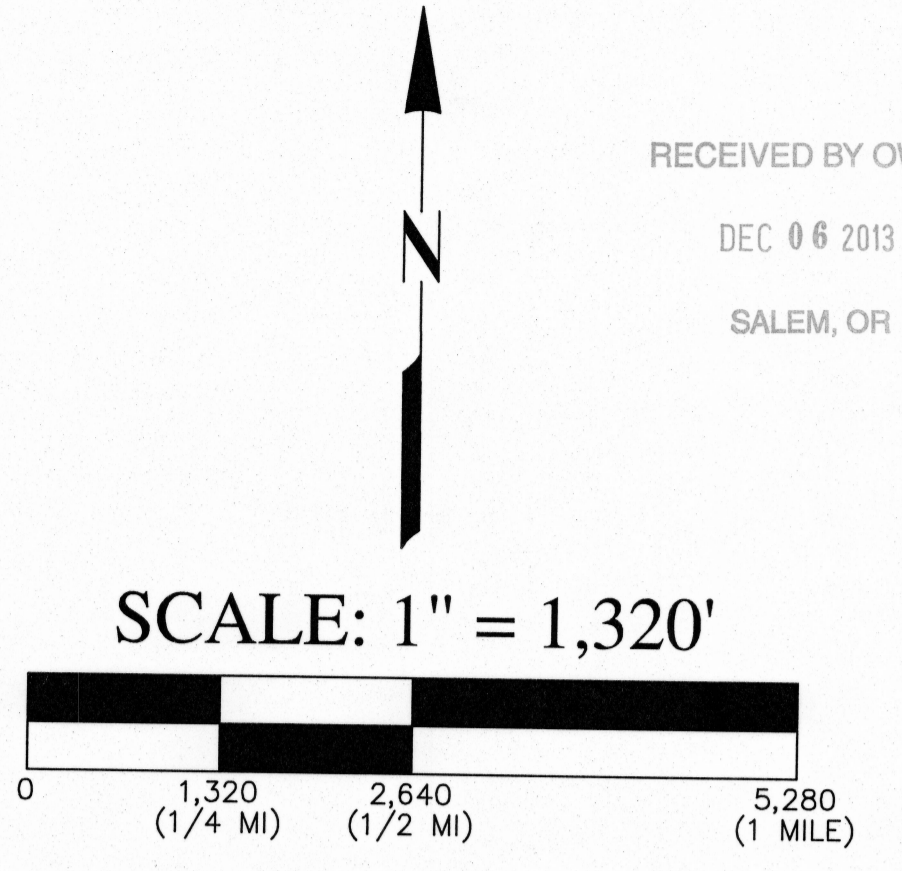


RECEIVED BY OWRD  
DEC 06 2013  
SALEM, OR

RECEIVED BY OWRD  
DEC 06 2013  
SALEM, OR



**POA #1**  
AN EXISTING WELL, COMMONLY REFERRED TO AS THE "PAUL HILL WELL", LOCATED 616 FEET NORTH AND 1,984 FEET WEST OF THE SOUTHEAST CORNER OF T9S, R40E, SECTION 18, W.M.

**POA #2**  
A PROPOSED WELL, THE ASSUMED LOCATION OF WHICH IS 760 FEET NORTH AND 900 FEET WEST OF THE SOUTHEAST CORNER OF T9S, R40E, SECTION 18, W.M.

**AREA OF USE**  
THE AREA OF USE IS THE BAKER CITY MUNICIPAL WATER DISTRICT, THE LIMITS OF WHICH IS DEFINED AS THE URBAN GROWTH BOUNDARY FOR THE CITY OF BAKER CITY. THE APPROXIMATE NUMBER OF ACRES PER QUARTER/QUARTER FOR THE AREA OF USE IS:

<b>SECTION 5</b> SW SW 3.0 AC	<b>SECTION 15</b> NE NW 40.0 AC NW NW 40.0 AC SW NW 40.0 AC NE NE 40.0 AC NW NE 40.0 AC SW NE 40.0 AC NE NW 40.0 AC NW NW 40.0 AC SE NW 40.0 AC SW NW 40.0 AC	<b>SECTION 20</b> NE NE 40.0 AC NW NE 40.0 AC SE NE 40.0 AC SW NE 40.0 AC NE NW 40.0 AC NW NW 40.0 AC SE NW 40.0 AC SW NW 40.0 AC NE SE 40.0 AC NW SE 40.0 AC SE SE 40.0 AC SW SE 40.0 AC NE NW 40.0 AC NW NW 40.0 AC SE NW 40.0 AC SW NW 40.0 AC
<b>SECTION 7</b> NE NE 30.2 AC NW NE 19.3 AC SE NE 39.9 AC SW NE 7.8 AC NE SE 40.0 AC NW SE 40.0 AC SE SE 40.0 AC SW SE 36.6 AC	<b>SECTION 16</b> NE NE 40.0 AC NW NE 40.0 AC SE NE 40.0 AC SW NE 40.0 AC NE NW 40.0 AC NW NW 40.0 AC SE NW 40.0 AC SW NW 40.0 AC NE SE 40.0 AC NW SE 40.0 AC SE SE 40.0 AC SW SE 40.0 AC NE NW 40.0 AC NW NW 40.0 AC SE NW 40.0 AC SW NW 40.0 AC	<b>SECTION 21</b> NE NE 40.0 AC NW NE 40.0 AC SE NE 40.0 AC SW NE 40.0 AC NE NW 40.0 AC NW NW 40.0 AC SE NW 40.0 AC SW NW 40.0 AC NE SE 40.0 AC NW SE 40.0 AC SE SE 40.0 AC SW SE 40.0 AC NE NW 40.0 AC NW NW 40.0 AC SE NW 40.0 AC SW NW 40.0 AC
<b>SECTION 8</b> NW NW 21.2 AC SE NW 3.7 AC SW NW 38.1 AC NE SE 40.0 AC NW SE 40.0 AC SE SE 40.0 AC SW SE 40.0 AC NE NW 40.0 AC NW NW 40.0 AC SE NW 40.0 AC SW NW 40.0 AC NE SE 40.0 AC NW SE 40.0 AC SE SE 40.0 AC SW SE 40.0 AC	<b>SECTION 17</b> NE NE 40.0 AC NW NE 40.0 AC SE NE 40.0 AC SW NE 40.0 AC NE NW 40.0 AC NW NW 40.0 AC SE NW 40.0 AC SW NW 40.0 AC NE SE 40.0 AC NW SE 40.0 AC SE SE 40.0 AC SW SE 40.0 AC NE NW 40.0 AC NW NW 40.0 AC SE NW 40.0 AC SW NW 40.0 AC	<b>SECTION 28</b> NE NE 40.0 AC NW NE 40.0 AC SE NE 40.0 AC SW NE 40.0 AC NE NW 40.0 AC NW NW 40.0 AC SE NW 40.0 AC SW NW 40.0 AC NE SE 40.0 AC NW SE 40.0 AC SE SE 40.0 AC SW SE 40.0 AC NE NW 40.0 AC NW NW 40.0 AC SE NW 40.0 AC SW NW 40.0 AC
<b>SECTION 9</b> NE NE 40.0 AC NW NE 23.0 AC SE NE 40.0 AC SW NE 29.7 AC NE SE 40.0 AC NW SE 40.0 AC SE SE 40.0 AC SW SE 40.0 AC NE NW 40.0 AC NW NW 40.0 AC SE NW 40.0 AC SW NW 40.0 AC	<b>SECTION 18</b> NE NE 40.0 AC NW NE 40.0 AC SE NE 40.0 AC SW NE 40.0 AC NE NW 40.0 AC NW NW 40.0 AC SE NW 40.0 AC SW NW 40.0 AC NE SE 40.0 AC NW SE 40.0 AC SE SE 40.0 AC SW SE 40.0 AC	<b>SECTION 29</b> NE NE 40.0 AC NW NE 40.0 AC SE NE 40.0 AC SW NE 40.0 AC NE NW 40.0 AC NW NW 40.0 AC SE NW 40.0 AC SW NW 40.0 AC NE SE 40.0 AC NW SE 40.0 AC SE SE 40.0 AC SW SE 40.0 AC
<b>SECTION 10</b> SE SW 4.1 AC	<b>SECTION 19</b> NE NE 40.0 AC NW NE 40.0 AC SE NE 40.0 AC SW NE 0.8 AC NE SE 40.0 AC NW SE 8.6 AC SE SE 40.0 AC	<b>SECTION 30</b> NE NE 40.0 AC SE NE 40.0 AC

TOTAL = 4,895.8 AC

RECEIVED BY OWRD  
DEC 06 2013  
SALEM, OR

REVISD:		
DESIGNED BY: D. SCHWIN		DWG SCALE: 1" = 1320'
DRAWN BY: D. SCHWIN	DWG DATE: October 28, 2013	JOB NUMBER:
REVIEW BY:		ACAD FILE: E:\CAD\Water\Wells\Paul Hill water right app.dwg

BAKER CITY, OREGON  
OFFICE OF TECHNICAL SERVICES

CITY OF BAKER CITY  
"PAUL HILL WELL"  
GROUNDWATER PERMIT  
APPLICATION MAP

SHEET  
1  
OF  
1