

TOWNSHIP 1 S., RANGE 21 E.

app no. G-16275

RECEIVED

JUL 16 2004

WATER RESOURCES DEPT
SALEM, OREGON



SCALE 1" = 1320'

4

3

RECEIVED

SEP 15 2003

WATER RESOURCES DEPT
SALEM, OREGON

This map is for
WELL application in
name of TANIS JOHNSON

WELL
450' S & 200' E from
NW/4 COR Sec 10

WELL

→ Arlington

To SW 1/4 SE 1/4
90°

John Day Hwy

3-8
NW 1/4 NE 1/4

TL 500

→ To Gandon

10

OLEX

9

Permit no. G 15853

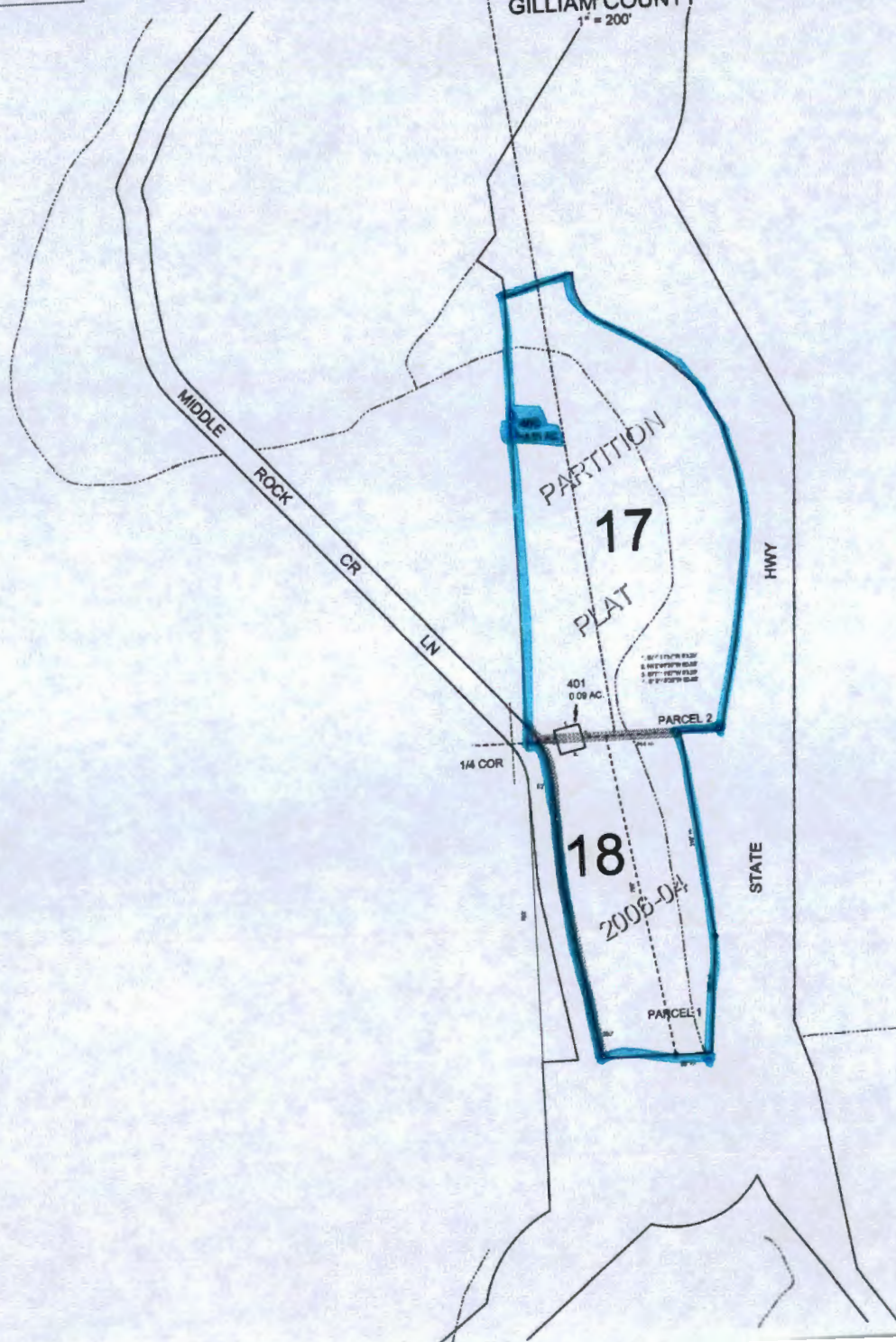
01S21E
DETAIL MAP 2
IN SEC 3 & 10
CANCELLED:

THIS MAP WAS PREPARED FOR
ASSESSMENT PURPOSE ONLY



DETAIL MAP NO. 2
T.1S. R.21E. W.M.
GILLIAM COUNTY
1" = 200'

RECEIVED BY OWRD
APR 27 2015
SALEM, OR



T 12050

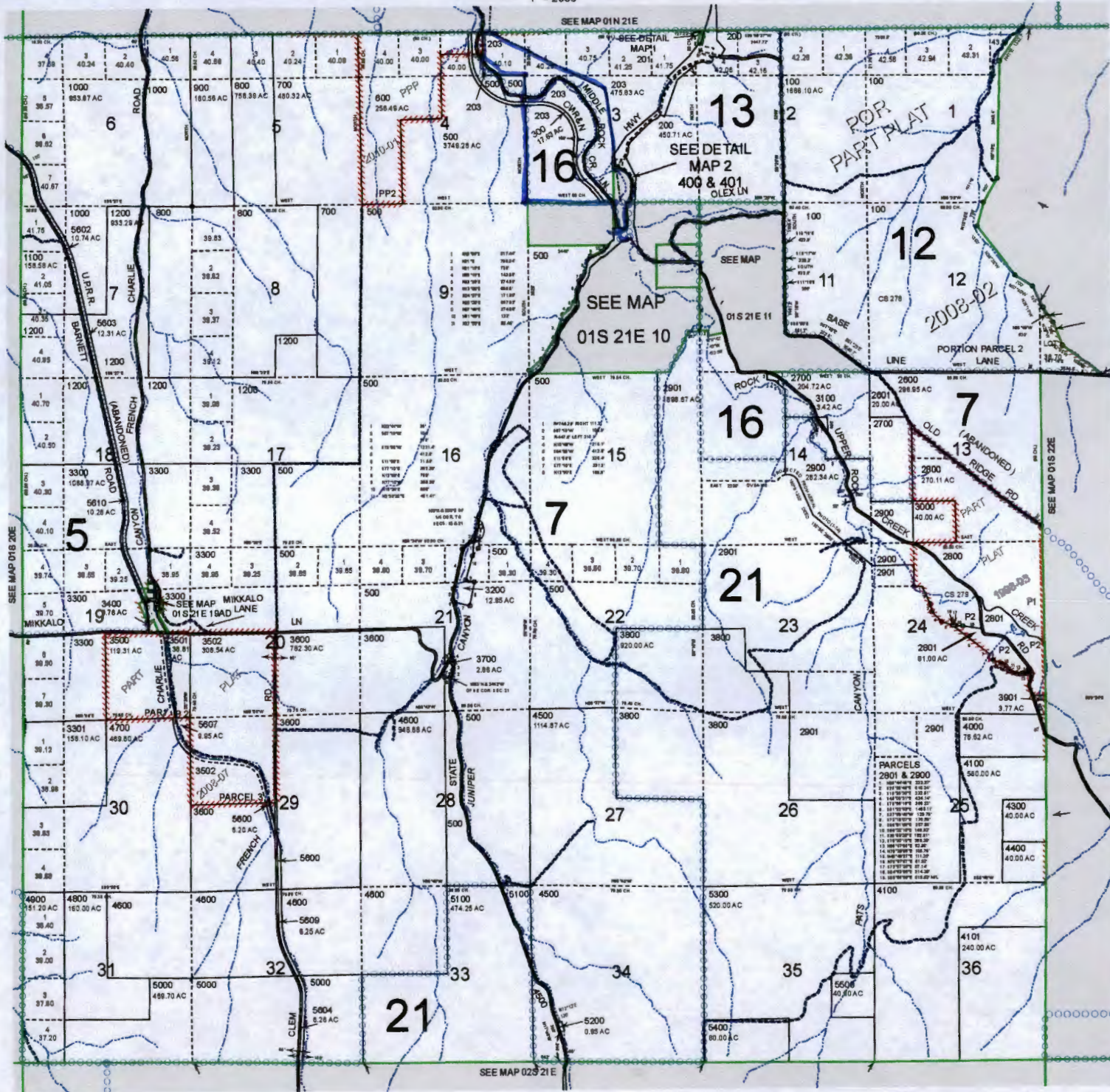
Revised:
1/13/21
IN SEC 3 & 10
01S21E
DETAIL MAP

THIS MAP WAS PREPARED FOR ASSESSMENT PURPOSE ONLY

T.1S. R.21E. W.M.
GILLIAM COUNTY
1" = 2000'

01S21E

LCATDWC - 2012-08-03 14:53



CANCELLED
 202
 202U1
 202U2
 501
 1300
 1400
 1401
 1402
 1500
 1600
 1700
 1800
 1900
 1901
 2000
 2100
 2200
 2300
 2400
 2500
 2600
 2602
 2603
 2902
 3302
 3401
 3600
 4200
 5801
 5905
 5908
 5908
 5908

T 12050

RECEIVED BY OWRD

APR 27 2015

SALEM, OR

01S21E