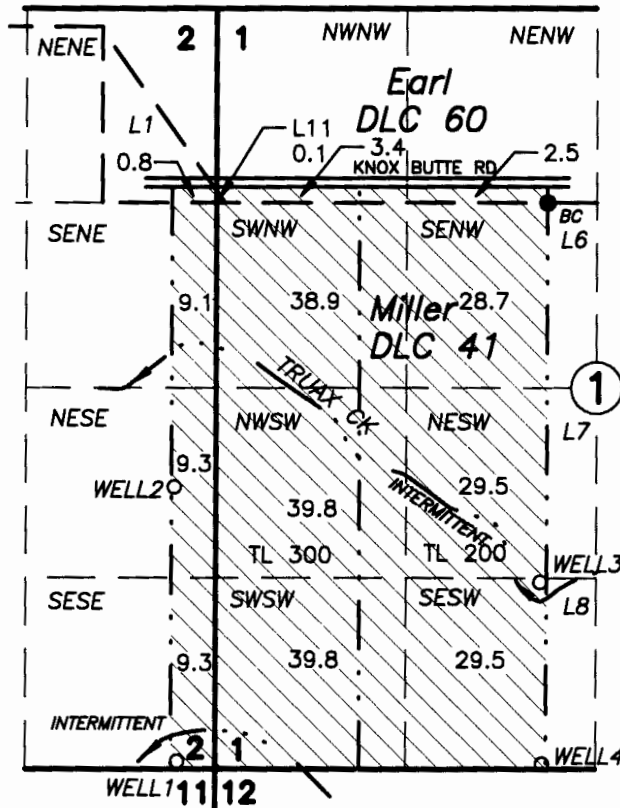


T11S, R3W, W.M.



RECEIVED BY OWRD

DEC 05 2014

SALEM, OR

PROPOSED WELL LOCATIONS (APPROXIMATE)

- WELL1: 3920 FT S. & 2595 FT W. OF NE CORNER MILLER DLC 41
- WELL2: 1980 FT S. & 2595 FT W. OF NE CORNER MILLER DLC 41
- WELL3: 2630 FT S. & 10 FT W. OF NE CORNER MILLER DLC 41
- WELL4: 3920 FT S. & 10 FT W. OF NE CORNER MILLER DLC 41

LEGEND

- . . . --- . . . PROPERTY LINE
- . . . --- . . . STREAM / CREEK
- . . . --- . . . DLC LINE
- MONUMENT
- BC BRASS CAP
- TL TAX LOT
- PROPOSED WELL

ASSESSOR MAP
11S 3W 01

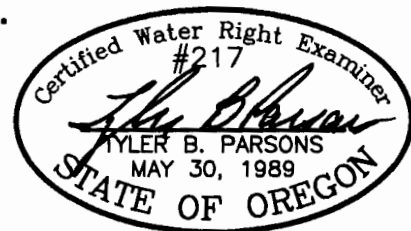
1" = 1320

GROUND WATER APPLICATION MAP

FOR

BRYAN WEBBER FARMS, INC.

Prepared November 14, 2014
 PARSONS SURVEYING
 1915 SE Stone St.
 Corvallis, OR 97333
 541-752-7515
 Project No. 1430



RENEWS: 12/31/2016

THIS MAP IS NOT INTENDED TO PROVIDE
 LEGAL DIMENSIONS OR LOCATION OF
 PROPERTY OWNERSHIP LINES

0-17971