

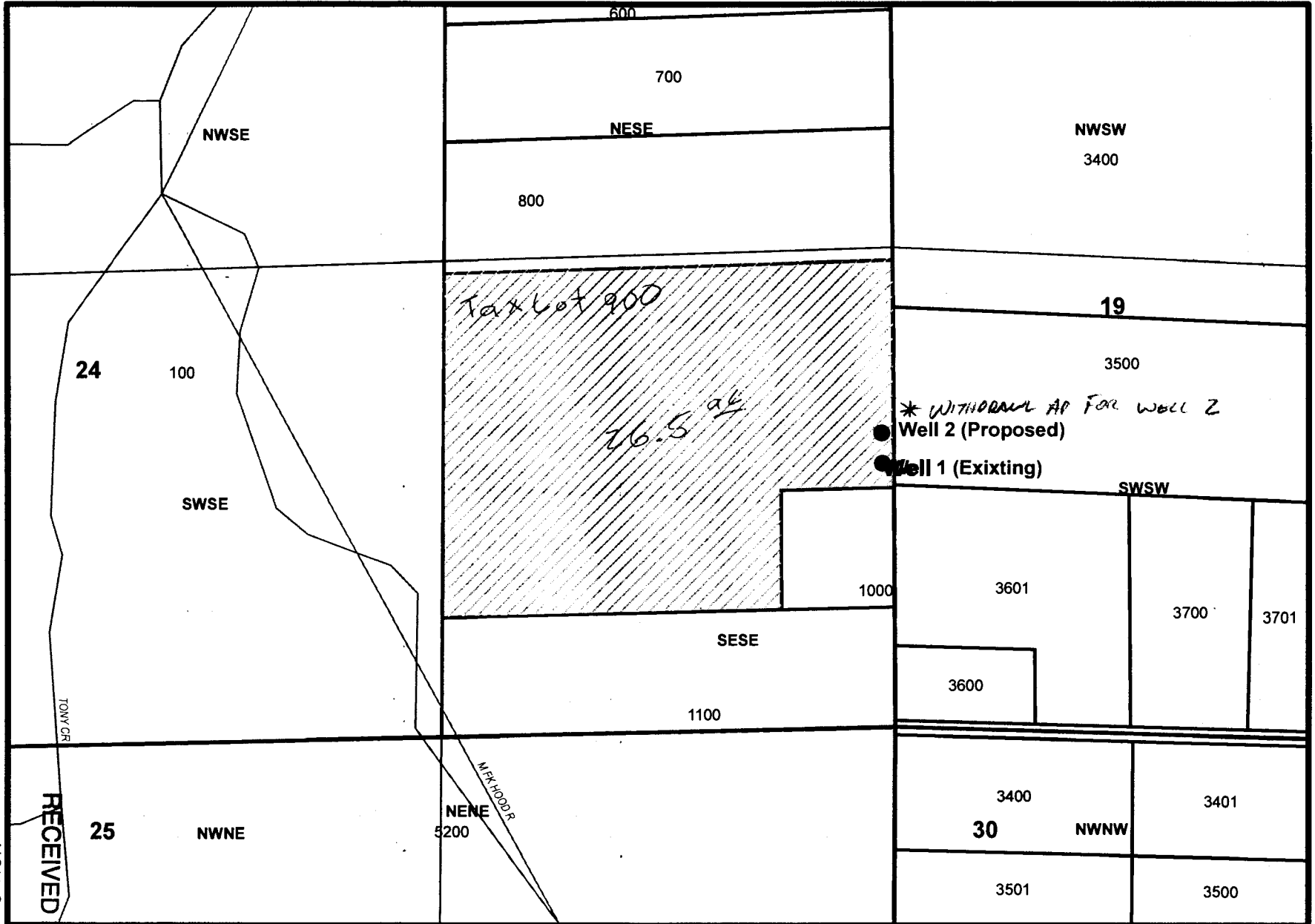
1N 9E 24 900

Well 1 Coordinates

45.551382; -121.631031 Well 1 (Existing) is 731 ft north and 39 ft west of SE Corner, Section 24.

Well 2 Coordinates

45.55162; -121.63108 Well 2 (Proposed) is 820 ft north and 39 ft west of SE Corner, Section 24.



G-17600

SALEM, OR

NOV 21 2012

RECEIVED BY OWRD