

# Map 1 of 2 Island Lakes Condominiums

S.E. 1/4 S.E. 1/4 SEC. 13 T.17S. R.4W. W.M.  
Lane County  
1" = 100'

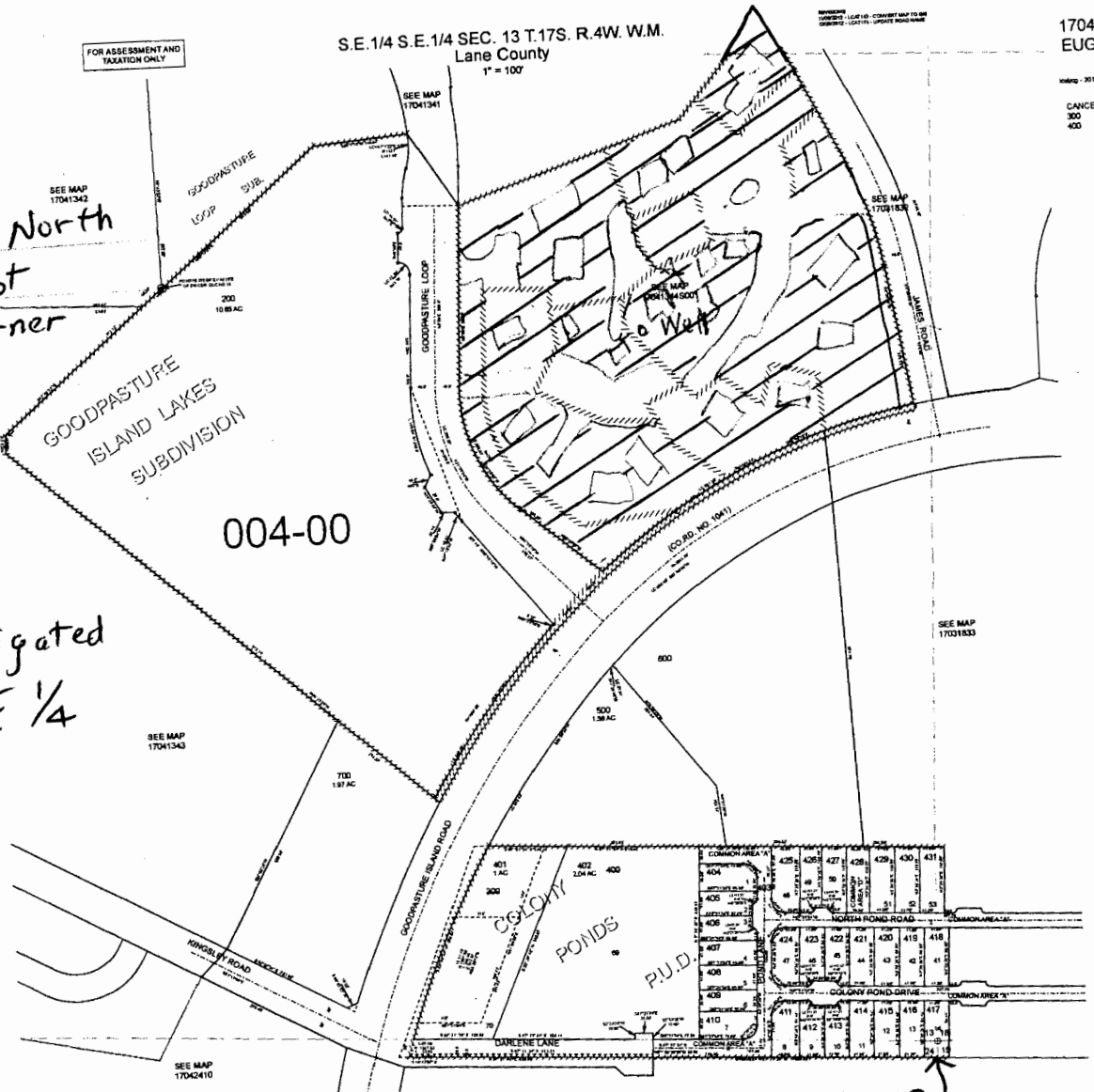
17041344  
EUGENE

Map - 2012-12-28 15:30  
CANCELLED  
300  
400

Well is 1185' North  
and 475' West  
from SE corner  
Section 13

T17S R4W  
W.M.

6.4 Ac irrigated  
in SE 1/4 SE 1/4  
Sec 13



SE Cor Sec 13

EUGENE  
17041344



scale 1" = 300'

RECEIVED BY OWRD

JAN 02 2015

SALEM, OR

Q-17978

FOR ASSESSMENT AND TAXATION ONLY

S.E. 1/4 S.E. 1/4 SEC. 13 T.17S. R.4W. W.M.  
Lane County

1" = 50'

Acres 6.4 total

TL 101	2.3	All in SE SE
102	0.2	
103	0.8	
104	0.4	
105	1.5	
106	1.2	

REVISIONS 11/08/2013 - LCM142 - CONVERT MAP TO GIS

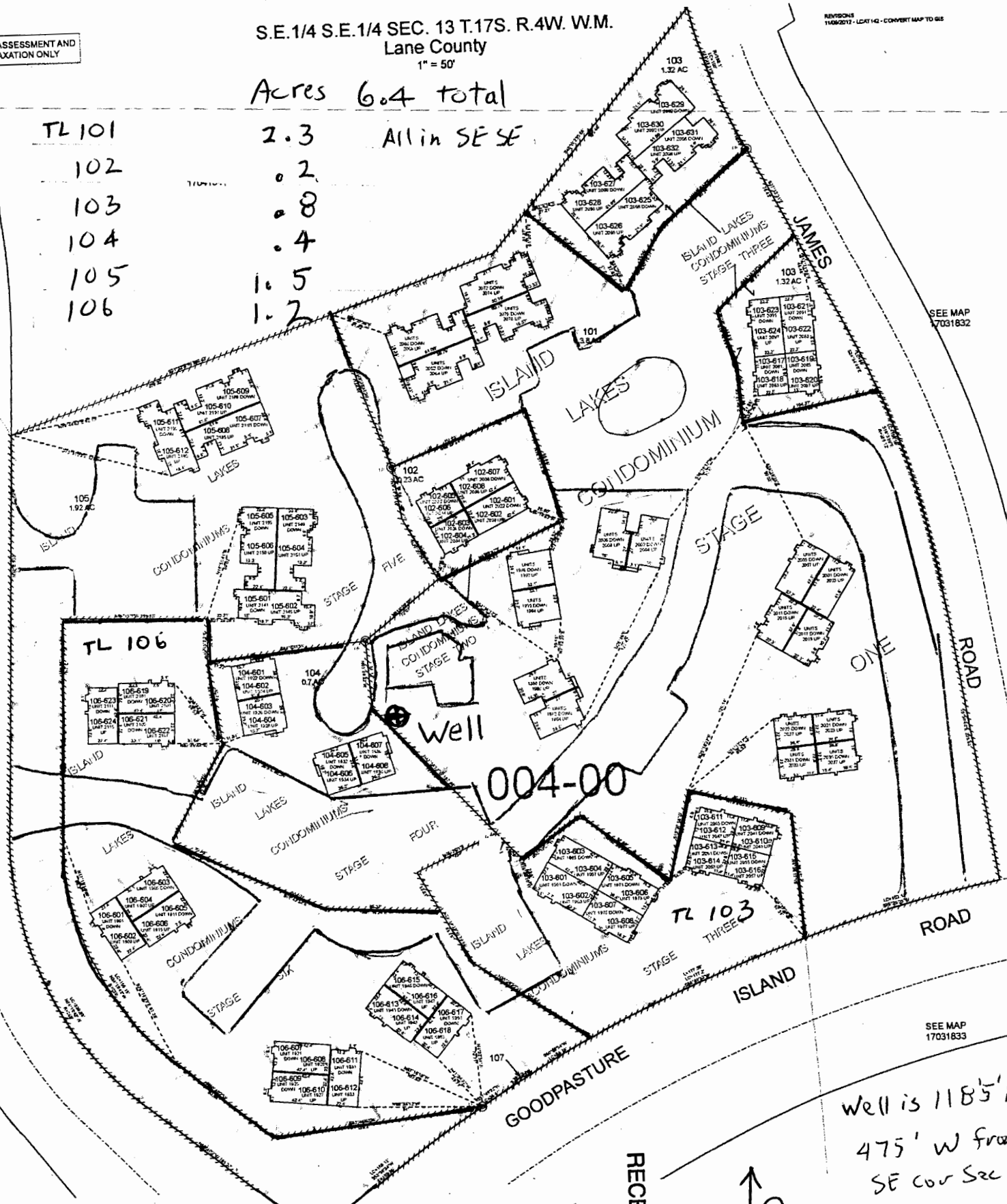
SEE MAP 17031832

SEE MAP 17031833

LOOP ROAD

ROAD

ROAD



004-00

Well

TL 103

Map 2 of 2 Island Lakes  
Condominiums  
61-17978

SALEM, OH

JAN 02 2015

RECEIVED BY OWRD



scale 1" = 100'

Well is 1185' N  
475' W from  
SE cor Sec 13