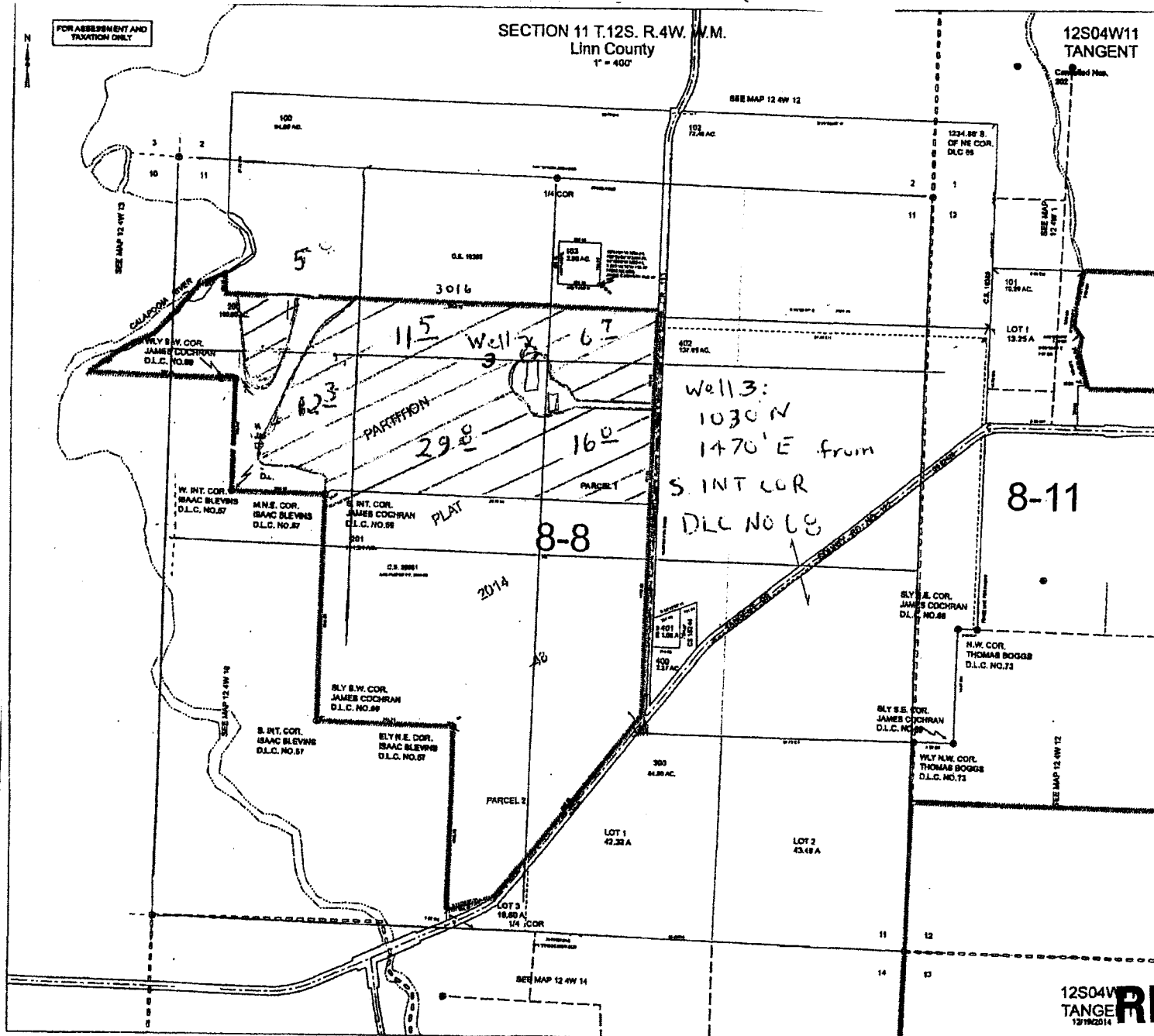


FOR ASSESSMENT AND TAXATION ONLY

SECTION 11 T.12S. R.4W. W.M.  
Linn County  
1" = 400'

12S04W11  
TANGENT



Acres

NW NE	6 <sup>7</sup> / <sub>8</sub>
SW NE	16 <sup>2</sup> / <sub>8</sub>
NE NW	11 <sup>2</sup> / <sub>8</sub>
NW NW	5 <sup>2</sup> / <sub>8</sub>
SW NW	12 <sup>3</sup> / <sub>8</sub>
SE NW	22 <sup>2</sup> / <sub>8</sub>
<hr/>	
	81 <sup>3</sup> / <sub>8</sub>



Henriksen

12S04W  
TANGENT  
12/19/2014

**RECEIVED**

APR 01 2015

WATER RESOURCES DEPT  
SALEM, OREGON