

1011452

Idaho Lane ↑

Section 26 25

RECEIVED BY OWNED

JUL 27 2012

SALEM, OR



T5N R26E SEC26 Tax Lot 103
MORROW COUNTY

California Lane
¼ cor.

W. 7th Street ↑

W. 6th Street

W. 4th Street

Kangaroo Court Lane

HWY

located 1610'S and 70'W
From the N ¼ corner
of Section 26 T5N26E
10-8-78 priority date

located S 220' and
W 330' From
NE corner, SE ¼, NE ¼
Section 26
T5N 26E 3-16-07
priority

(Proposed)
8" Pipeline 1500'

Tax Lot 203

Pivot

13.8 acres

3.8 acres

5.2 acres

Abandoned
Canal

APOA
(1234)
WELL

POA WELL
(1237)

Legend

○ Well

- - - pipeline

▨ Additional Points of Appropriation
(Proposed)

▨ unchanged POA

SCALE: 1 in. = 400 feet = 4 squares

Distance between sections is 1,320 ft

1011452

THIS MAP WAS PREPARED FOR ASSESSMENT PURPOSE ONLY

SECTION 26 T.5N. R.26E. W.M.

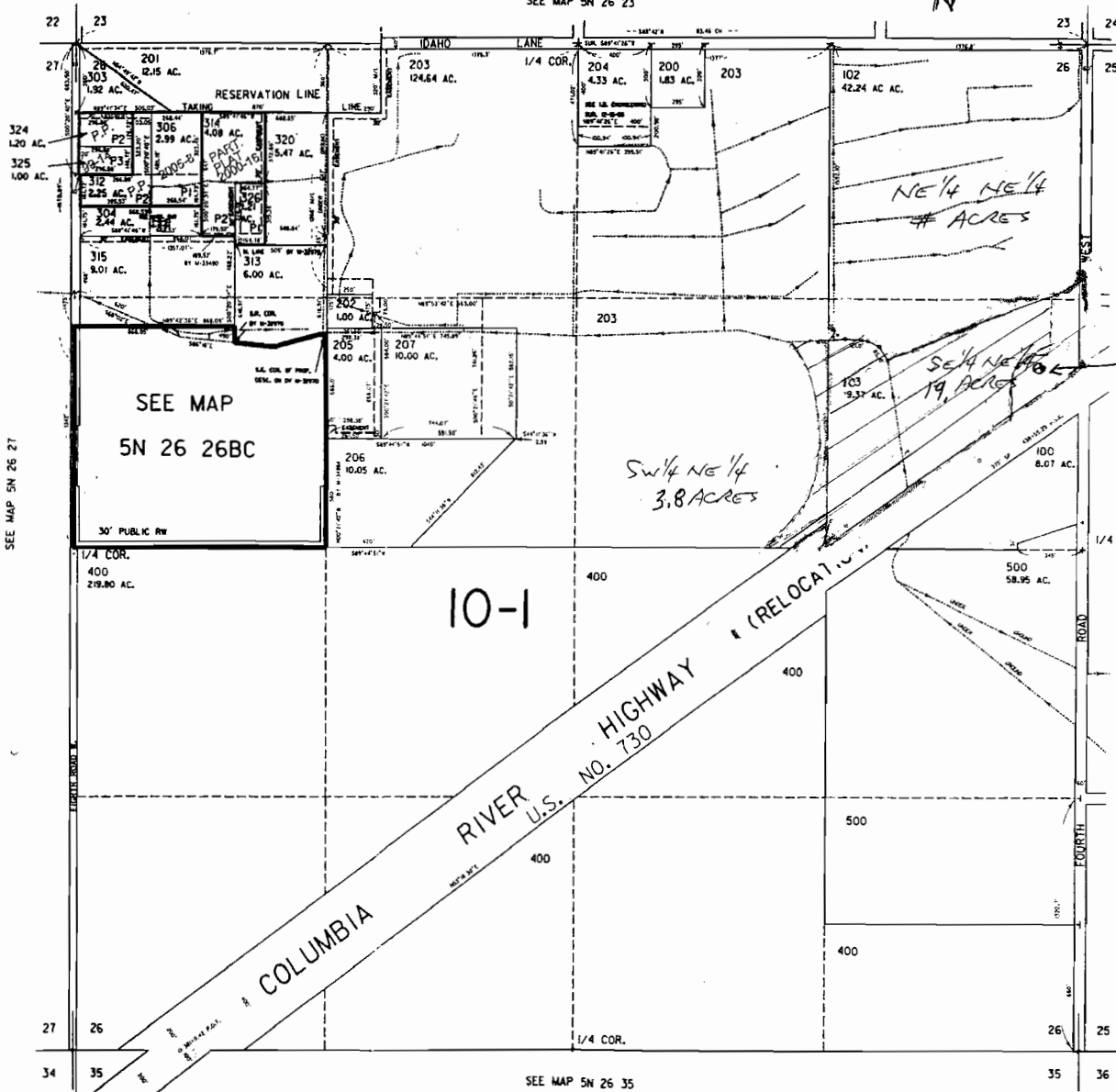
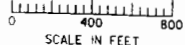
MORROW COUNTY

1" = 600'

SECTION 26 26 & INDEX

ADJUSTED APPROX SCALE CORRECTED SCALE 1" = 600 FT

SEE MAP SN 26 23



CANCELLED NO.
T.L. 301
T.L. 302
T.L. 305
T.L. 307 THRU 311
T.L. 316 THRU 319
T.L. 321 THRU 323

Well is located approximately 220' S and 330' W of E 1/4 corner of NE 1/4, Section 26, Township 5 North, Range 26 East, W.M.

RECEIVED
MAR 16 2007
WATER RESOURCES DEPT
SALEM, OREGON

Revised
11/30/2005, DLW
SN 26 26

SEE MAP SN 26 27

SEE MAP SN 26 25

SEE MAP SN 26 35

appno G-16816

RECEIVED