

T3S R1E S30

1" = 1320'

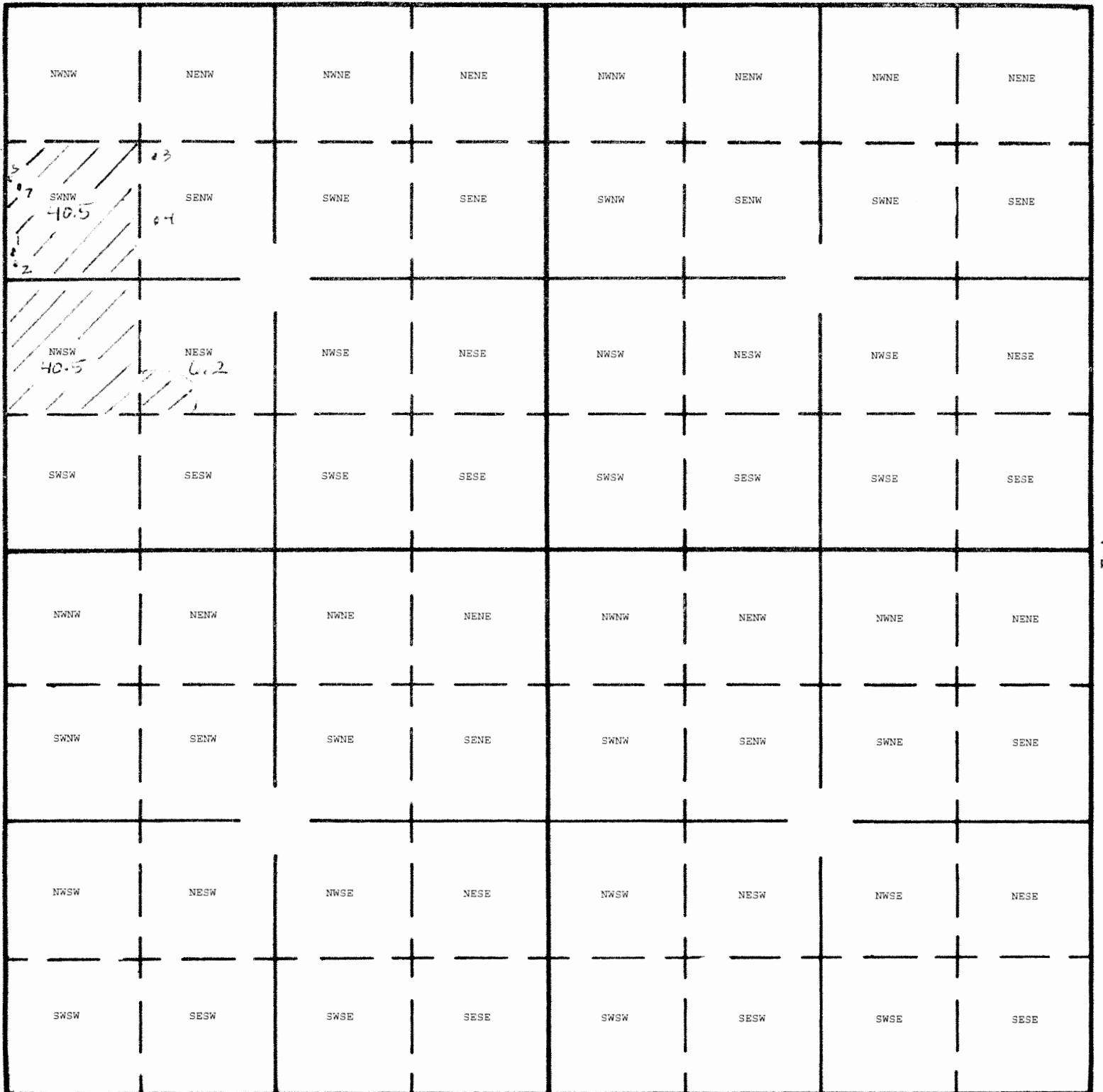
Tax Lot: 1000, 1100, 1200

Bob Gabriel



Application G-

Permit G-



- Well 1: 1080' S & 65' E fr NW cor, SWNW, Sec 30
- Well 2: 1155' S & 75' E fr NW cor, SWNW, Sec 30
- Well 3: 150' S & 1415' E fr NW cor, SWNW, Sec 30
- Well 4: 750' S & 1430' E fr NW cor, SWNW, Sec 30
- Well 5: 340' S & 45' E fr NW cor, SWNW, Sec 30
- Well 7: 425' S & 105' E fr NW cor, SWNW, Sec 30

RECEIVED

JAN 27 2015

WATER RESOURCES DEPT
SALEM, OREGON

G-17990

New primary irrigation:
 SWNW 40.5 ac
 NESW 6.2 ac
 NWSW 40.5 ac

T. 3S. R1E., W.M.

P.O.U. - PLACE OF IRRIGATION USE
WATER USE ACREAGE

NE 1/4 NW 1/4 SW 1/4 SECTION 30, T3S. R1E. W1

NE 1/4 NE 1/4	- 6.81 AC
NW 1/4 NE 1/4	- 2.41 AC
SE 1/4 NE 1/4	- 14.62 AC
SW 1/4 NE 1/4	- 27.30 AC
SE 1/4 NW 1/4	- 38.21 AC
SW 1/4 NW 1/4	- 2.13 AC
NE 1/4 SW 1/4	- 31.12 AC
NW 1/4 SW 1/4	- 1.77 AC
TOTAL	= 124.37 AC

SCALE: 1"=800'

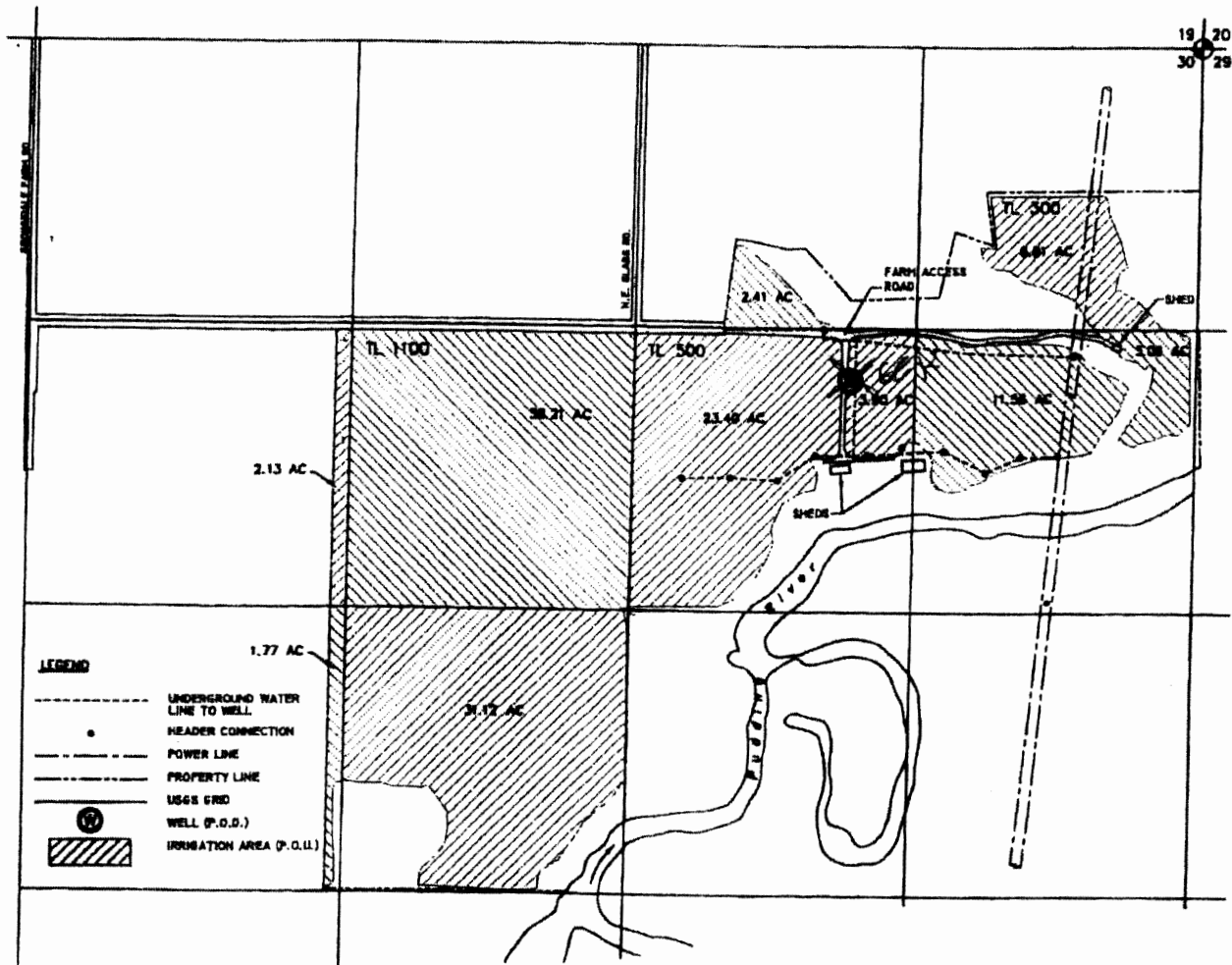
PREPARATION OF THIS MAP IS FOR THE PURPOSE OF IDENTIFYING THE LOCATION OF THE WATER RIGHT ONLY. THERE IS NO INTENT TO PROVIDE DIMENSIONS OR LOCATION OF PROPERTY OWNERSHIP LINES.

NOTE:

WELL LOCATION (P.O.B.) IS 3638 FT. N. AND 3810 FT. E. OF SW CORNER OF SECTION 30.

~~W216:~~

6E10



- LEGEND**
- UNDERGROUND WATER LINE TO WELL
 - HEADER CONNECTION
 - POWER LINE
 - PROPERTY LINE
 - USGS GRID
 - ⊙ WELL (P.O.B.)
 - ▨ IRRIGATION AREA (P.O.U.)

RECEIVED
JUL 28 2015
OWRD

RECEIVED
JAN 27 2015
WATER RESOURCES DEPT
SALEM, OREGON

G-47988