

Located 650 feet east and 100 feet south of the 1/4 quarter corner of

Sec 23
T 20S
R 46E

Well location

Pump # 3

SCALE: 1" = 400'

RECEIVED BY OWRD

617995

48-102-1509

JAN 26 2015

SEC. 23, T. 20 S., R. 46 E., W. M.

SALEM, OR

RECEIVED BY OWRD

MAR 19 2014

RECEIVED BY OWRD

SALEM, OR

MAR 10 2014

SALEM, OR

RECEIVED BY OWRD

SEC. 22 - T.20S. - R.46E.

RECEIVED BY OWRD

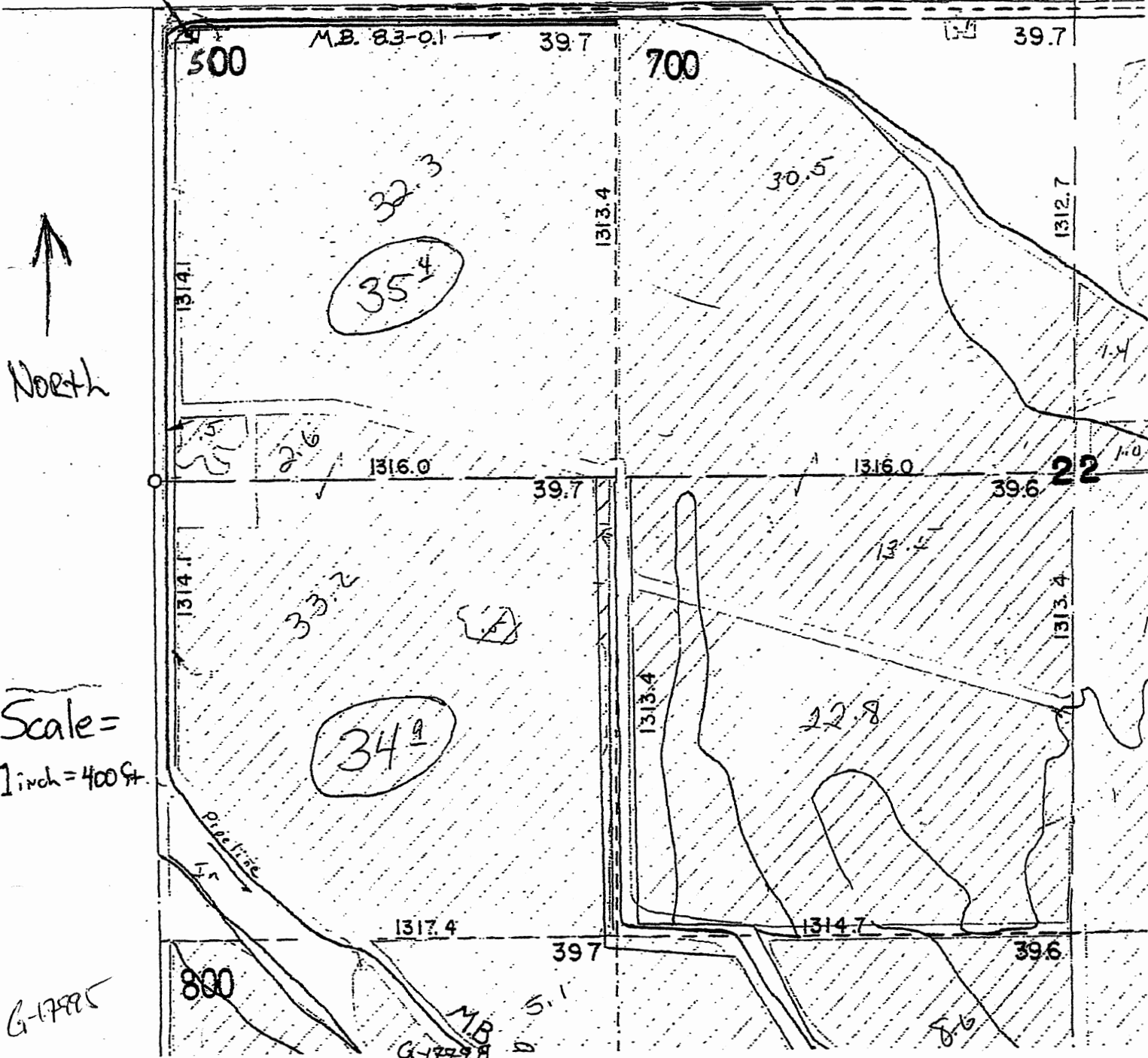
JAN 26 2015

FEB 09 2015

SALEM, OR

SALEM, OR

Well location located 170ft east and 170ft South of the 1/16th quarter corner of Sec. 22-T20S-R46E



Scale =
1 inch = 400 ft.

G-17795

M.B. 5.1
G-17798

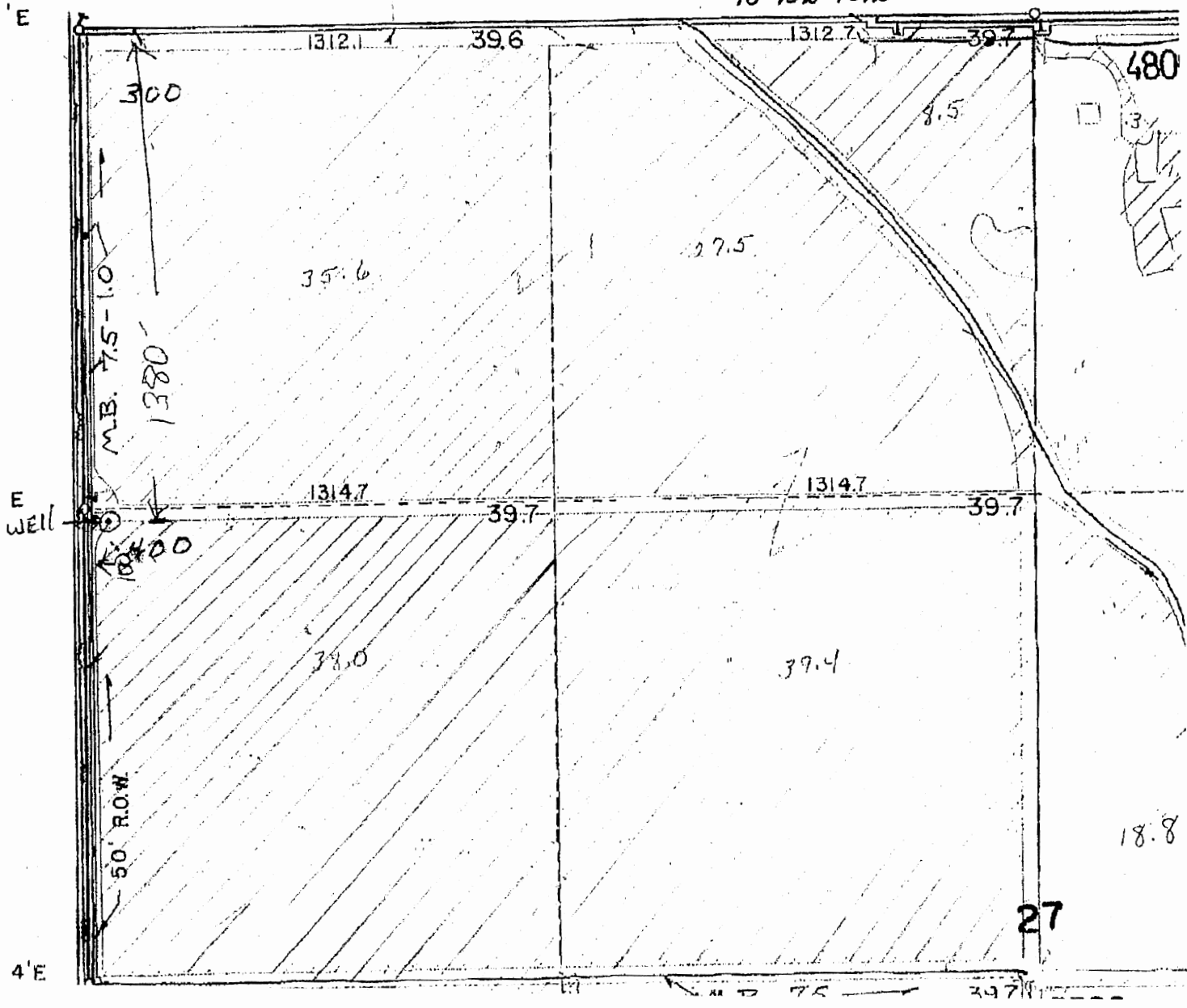
TMS
ASS

RECEIVED
APR 01 2015
OWRD

OWYHEE IRRIGATION I

SEC. 27 - T.20S. - R.46E.

48-102-1512



↑
N
SCALE: 1" = 400'

Pump # 5

6-17995