

↑
 N
 Scale: 1" = 400'
 Well location:
 1925 feet south
 1290 feet east
 from northeast
 corner of
 section 13
 T-20, R-45

RECEIVED BY OWRD

JUN 16 2014

SALEM, OR

RECEIVED BY OWRE

FEB 23 2015

SALEM, OR

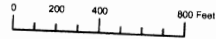
G-17878

G-17805

SEC. 13 - T.20S. - R.45E. - W.M.

48-102-1478

THIS MAP WAS PREPARED FOR
ASSESSMENT PURPOSE ONLY

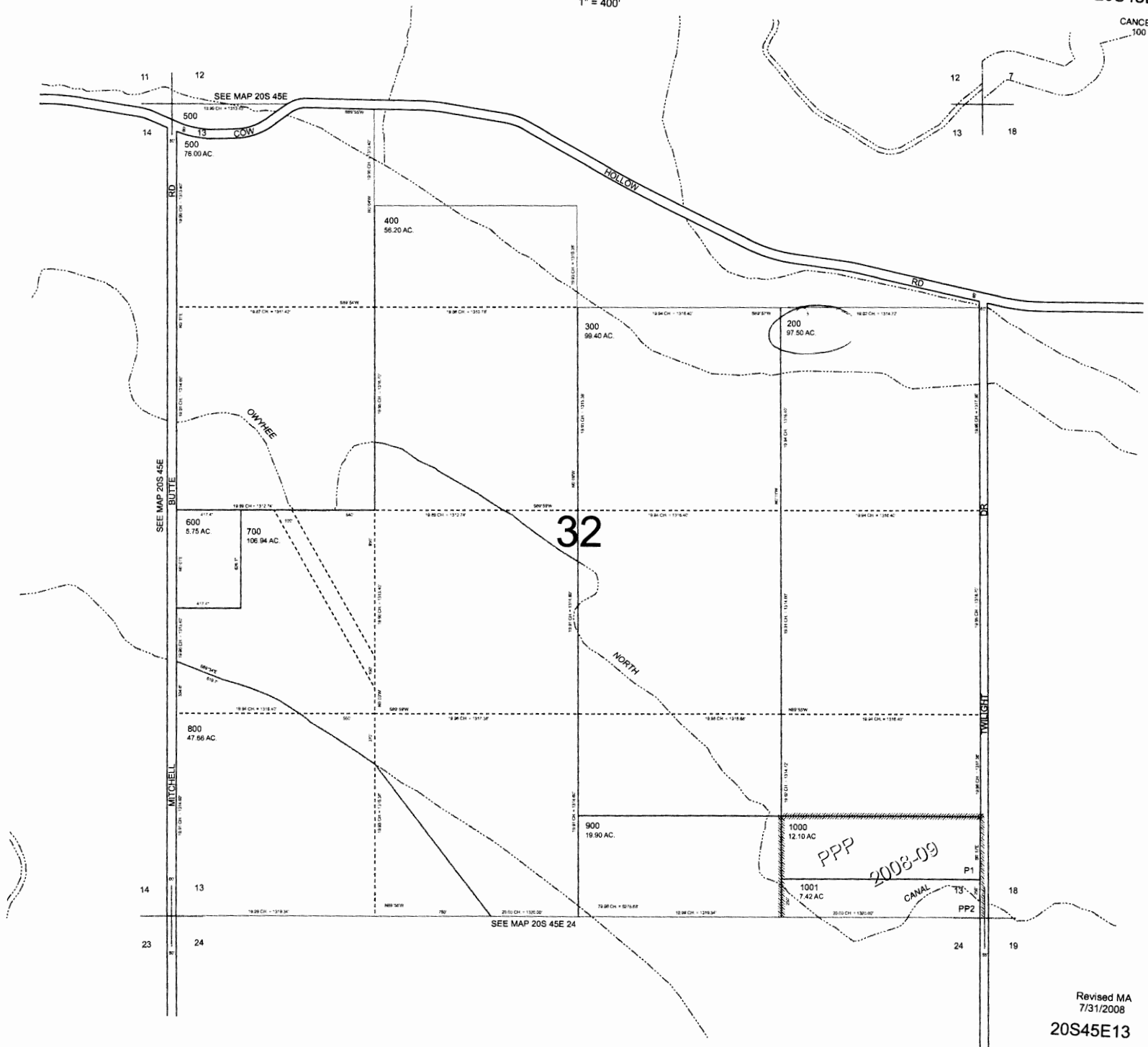


SECTION 13 T.20S. R.45E. W.M.
MALHEUR COUNTY
1" = 400'

20S45E13

CANCELLED:
100

GA-1500S



RECEIVED BY OWRD

FEB 23 2015

SALEM, OH

Revised MA
7/31/2008

20S45E13