

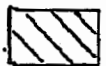



GROUND WATER APPLICATION MAP

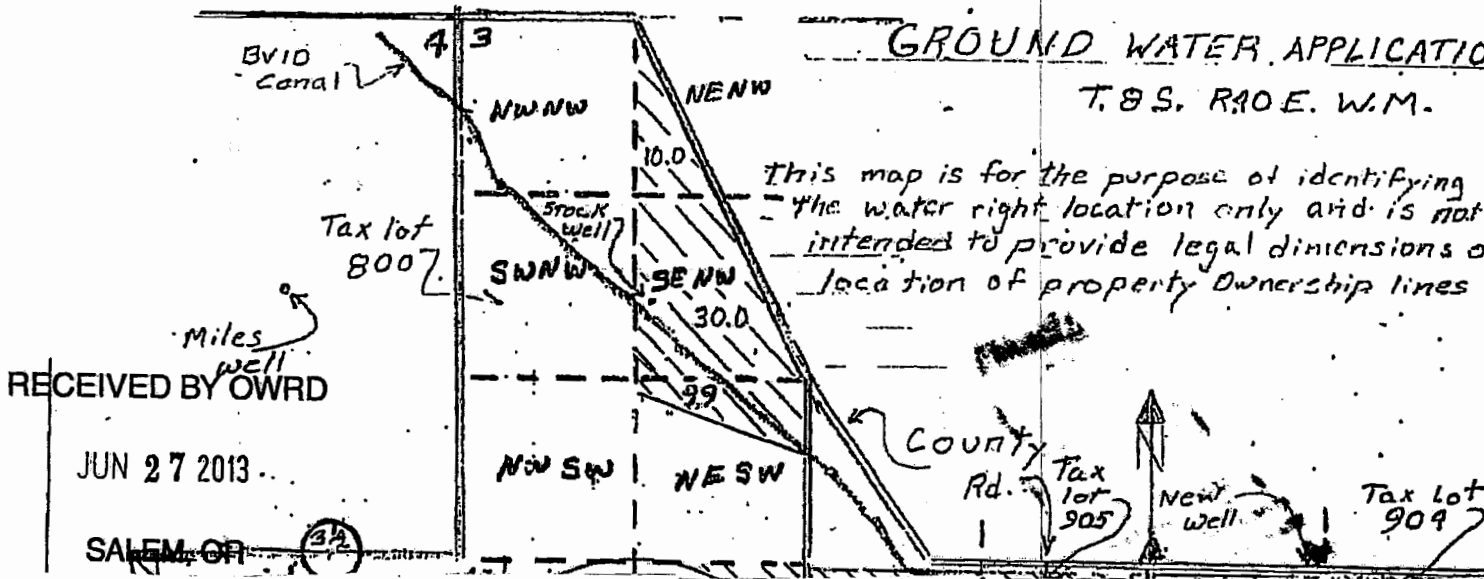
T. 8 S. R. 40 E. W. 1 M.

This map is for the purpose of identifying the water right location only and is not intended to provide legal dimensions or location of property ownership lines

LEGEND

- Well 
- Pivot Center 
- Scale 1 in = 1 mile
- Primary 
- Supplemental 

Drawn 2-19-2010



10.0 ac in NENW of Sec 3 T8S R40E
 30.0 ac in SENW of Sec 3 T8S R40E
 9.9 ac in NWSW of Sec 3 T8S R40E
TOTAL 49.9 ac

Stockwell is 480' N and 1350' E From 1/4 corner common to Secs 3 & 4 T8S R40E

RECEIVED BY OWRD

MAR 07 2016

SALEM, OR