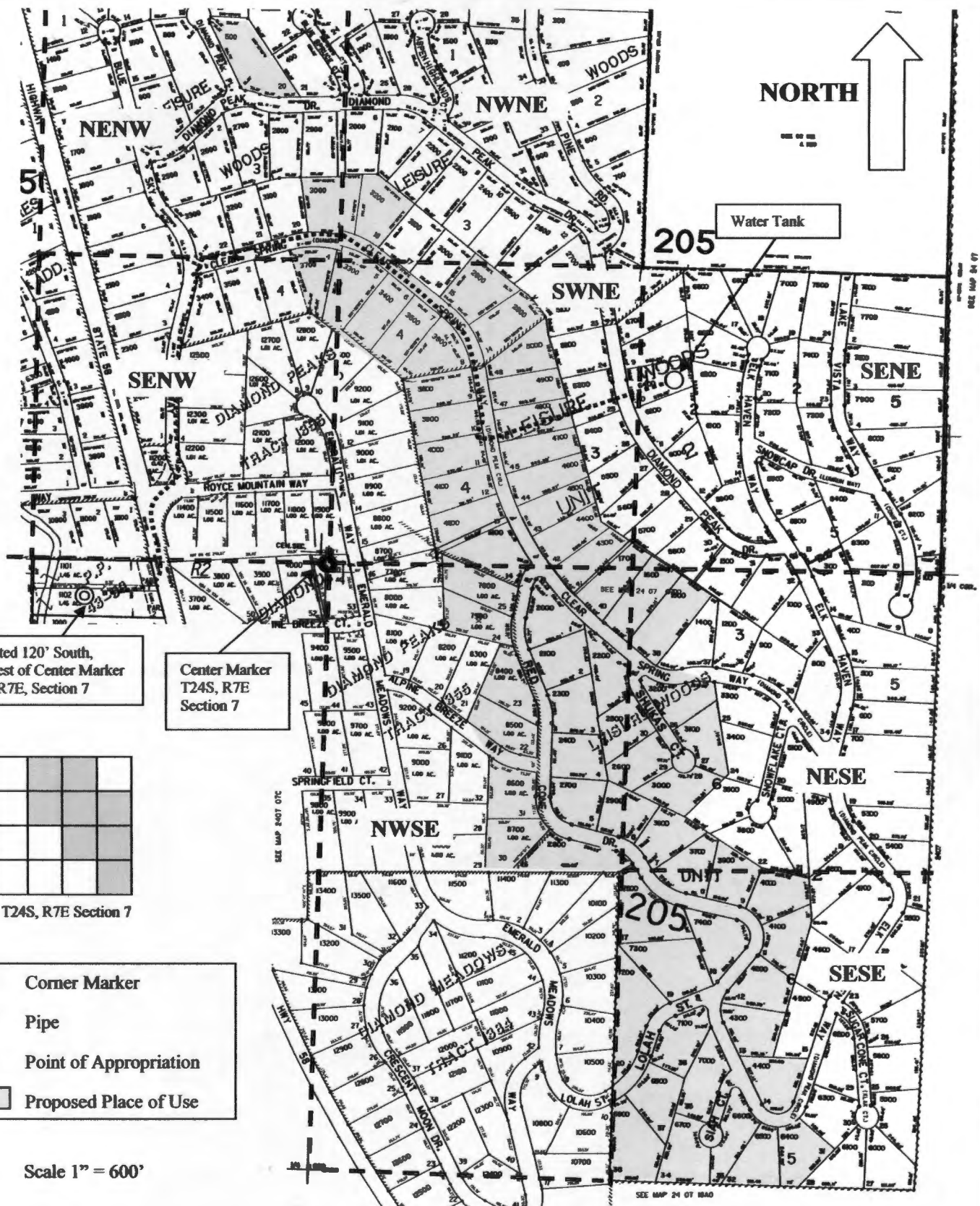
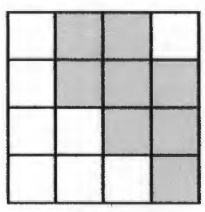


well elev ~ 4705



POA located 120' South,
1,065' West of Center Marker
of T24S, R7E, Section 7

Center Marker
T24S, R7E
Section 7



T24S, R7E Section 7

- Corner Marker
- Pipe
- Point of Appropriation
- Proposed Place of Use

Scale 1" = 600'

John A. Short
Water Right Services, LLC
 P.O. Box 1830, Bend, OR 97709
 541-408-7415 johnshort@usa.com
 www.oregonwater.us

**Ground Water Application Map for The Diamond Peaks at
 Leisure Woods I & II Homeowners Association, Inc.**

T24S R7E Section 7
 Klamath County, OR - November 23, 2010

RECEIVED

DEC 22 2010

WATER RESOURCES DEPT
 SALEM, OREGON

G-7445

