

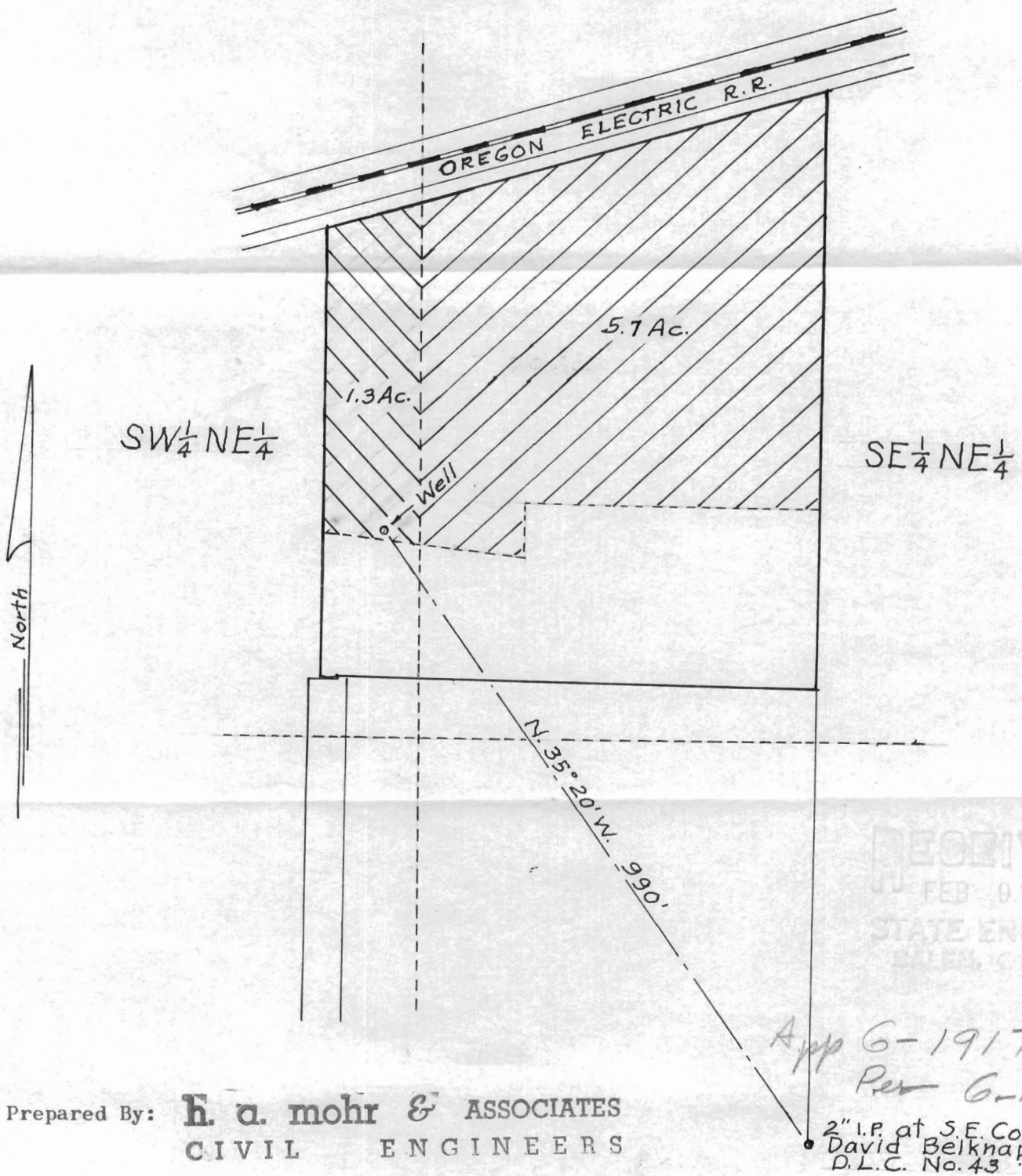
Application No. G-1917  
Permit No. G-1762

MAP TO ACCOMPANY WATER RIGHT APPLICATION  
of  
WILLIAM E. ANLIKER  
in  
SECTION 33, T1N, R2W, W.M.

Scale: 1" = 200'

February 1961

Total Acreage covered by this application: 7.0



Prepared By: **H. A. Mohr & Associates**  
CIVIL ENGINEERS

RECEIVED  
FEB 10 1961  
STATE ENGINEER  
SALEM, OREGON

App G-1917  
Per G-1762

2" I.P. at S.E. Cor.  
David Beiknap  
D.L.C. No. 43