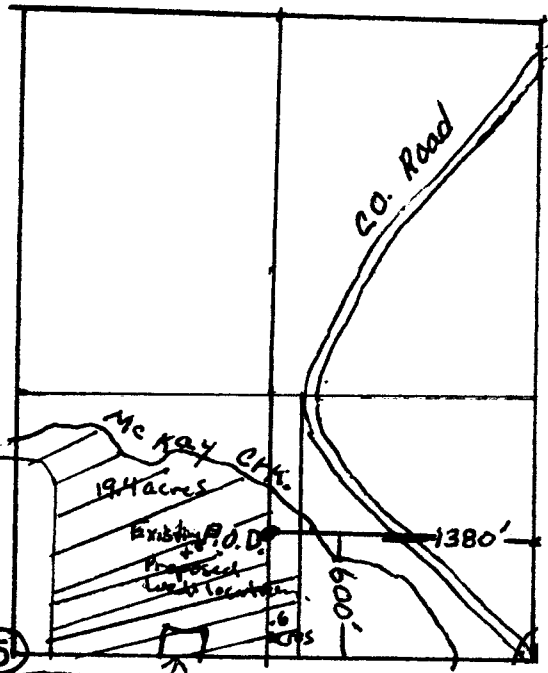


N.

Scale 1" = 1000'

T. 15 R. 33 E.W.M.
Sec. 5
Umatilla County



APPROX. 5
1/4 acre 28 a.c. Total property
Home area 20 a.c. irrigated

P. O. D. (Well) 600' N. 1380' W E. 1/4 corner

RECEIVED BY OWRD

AUG 06 2015

SALEM, OR