

WATER RIGHT APPLICATION MAP
FOR
OTLEY BROS. INC.

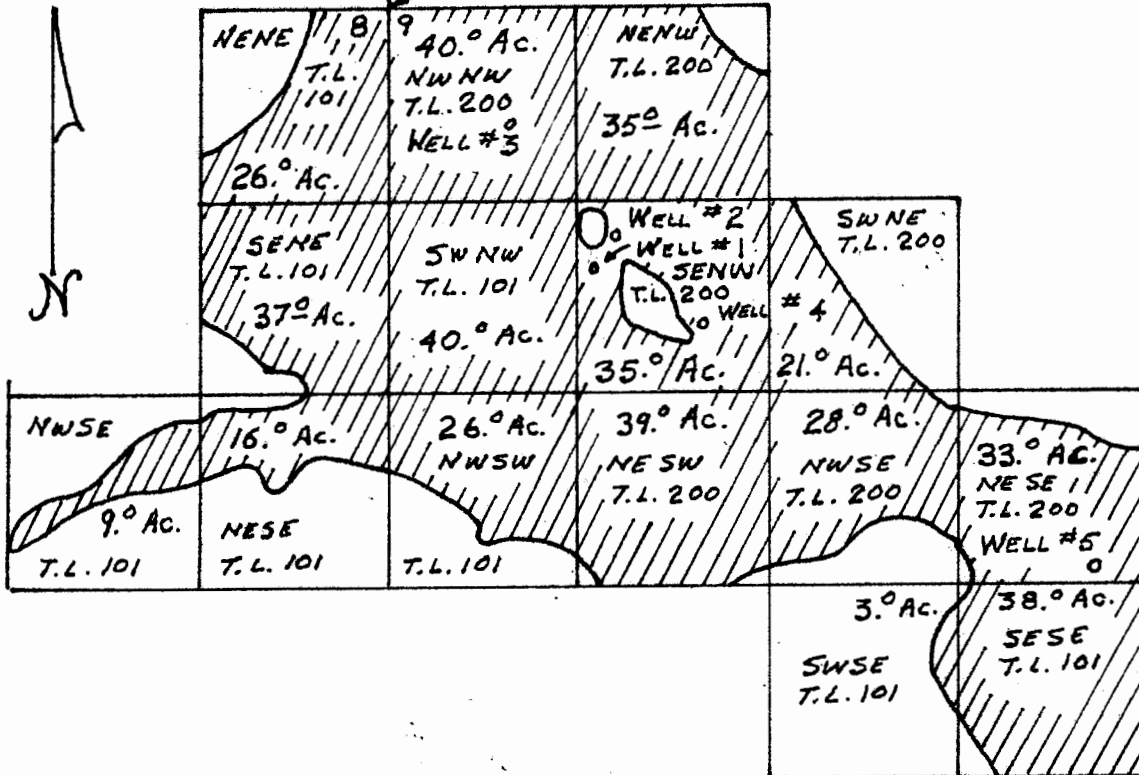
RECEIVED

AUG 11 2015

T. 29 S., R. 31 E., W.M.

WATER RESOURCES DEPT
SALEM, OREGON

54 MARKED
STONE N.W. CORNER SECTION 9



WELL LOCATIONS FROM THE
N.W. CORNER OF SECTION 9
WELL #1 1828'S. 1429'E.
WELL #2 1657'S. 1608'E.
WELL #3 805'S. 891'E.
WELL #4 2271'S. 2184'E.
WELL #5 3920'S 4937'E

IRRIGATION OF 426° ACRES

SCALE 4" = 1 MILE

B.R.S.

G-10129