



Oregon Water Resources Department

725 Summer St NE, Salem, OR 97301

(503)986-0900

RECEIVED BY OWRD

JUN 06 2013

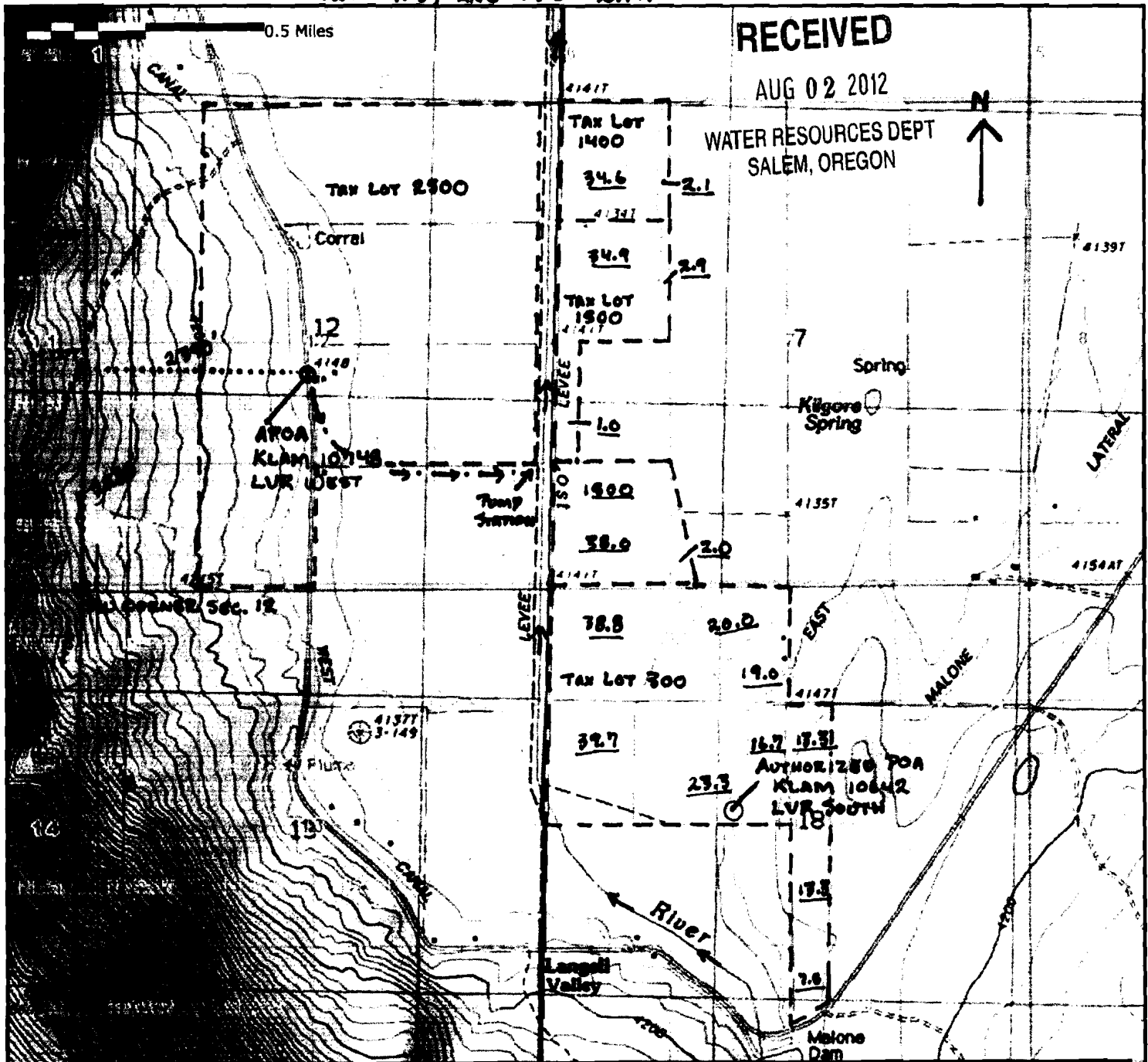
Oregon Water Rights

G-12458

PERMIT AMMENDMENT MAP

TWP 41 S, RNG 14 E W.M. SALEM, OR

TWP 41 S, RNG 13 E W.M.



Water Rights By Type

Points of Diversion	Places of Use
▲	Storage water
▲	Surface water
▼	Ground water

Water Rights By Use (Places of Use)

Recreation	Miscellaneous	Mining	Municipal
Fish	Agriculture	Power	Points of Diversion
Wildlife	Livestock	Commercial	Colors vary with use
Instream	Irrigation	Domestic	

1011607

MAP TO ACCOMPANY GROUND WATER APPLICATION

SITUATED IN THE W1/2 NW1/4 AND SW1/4 OF SECTION 7
 THE W1/2 SE1/4, SW1/4 NE1/4 AND THE NW1/4 OF
 SECTION 18, T41S, R14EWM, KLAMATH COUNTY, OREGON
 DECEMBER 1992

MAP PREPARED FOR
 -- BALIN RANCH --

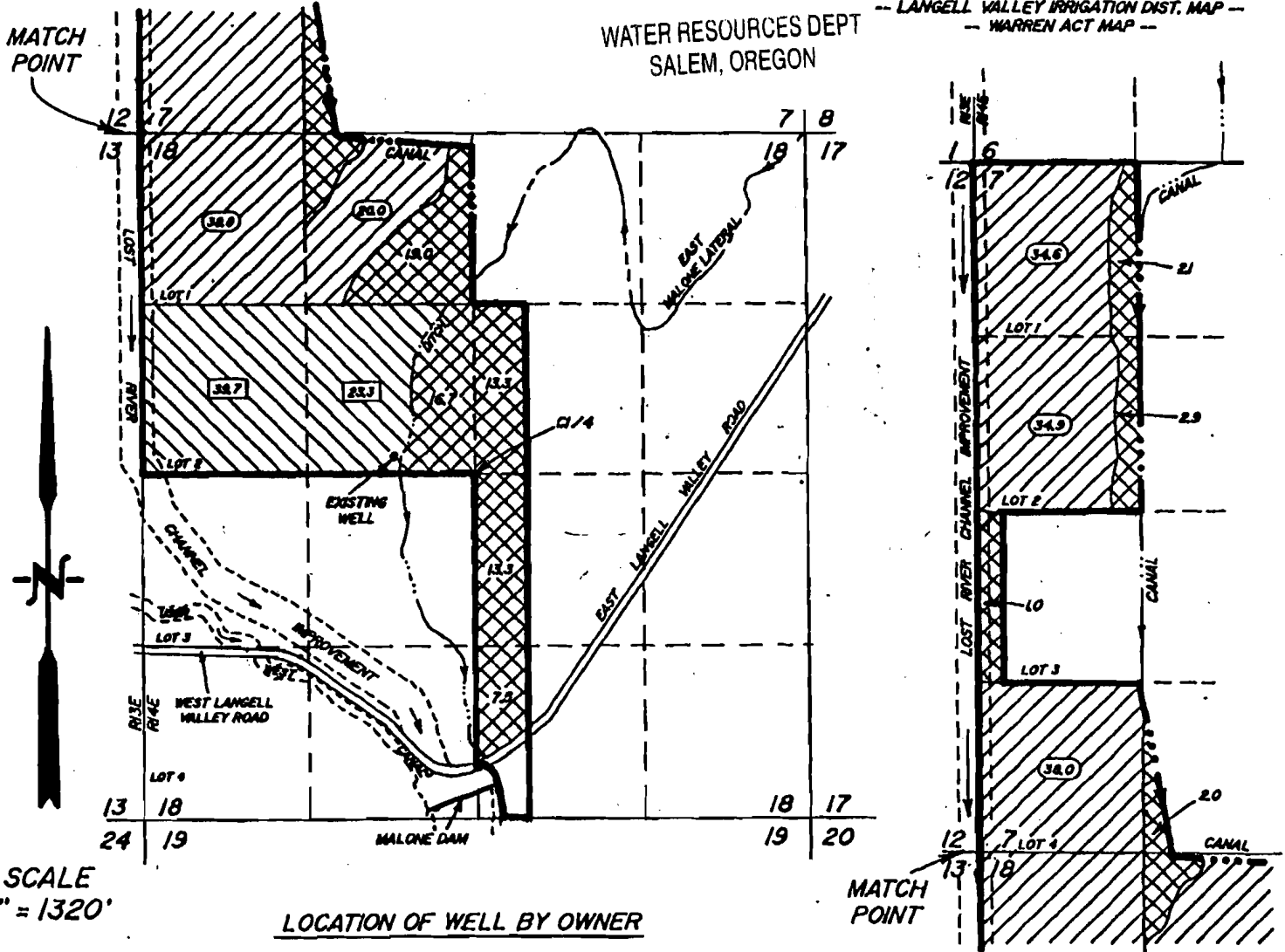
RECEIVED

WATER RESOURCES DEPT.
 SALEM, OREGON

AUG 02 2012

WATER RESOURCES DEPT.
 SALEM, OREGON

MAP PREPARED FROM
 -- ASSESSORS MAPS --
 -- LANGELL VALLEY IRRIGATION DIST. MAP --
 -- WARREN ACT MAP --



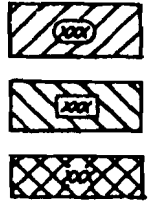
SCALE
 1" = 1320'

LOCATION OF WELL BY OWNER

150 FEET NORTH AND 640 FEET WEST OF
 THE CENTER 1/4 CORNER OF SECTION 18

TOTAL AREA THIS APPLICATION

-- 307.1 Ac. --



LANDS SUPPLEMENTAL TO WARREN ACT 166.3 Ac.
 LANDS SUPPLEMENTAL TO LANGELL VALLEY IRRIGATION DISTRICT 63.0 Ac.
 PRIMARY LANDS THIS APPLICATION RECEIVED BY OWNER 77.8 Ac.

application # 12972
 permit - G-12458

THE PURPOSE OF THIS MAP IS TO IDENTIFY THE LOCATION OF THE WATER RIGHT. IT IS NOT INTENDED TO PROVIDE INFORMATION RELATIVE TO THE LOCATION OF PROPERTY OWNERSHIP BOUNDARY LINES.

1011607

JUN 06 2013

SALEM, OR