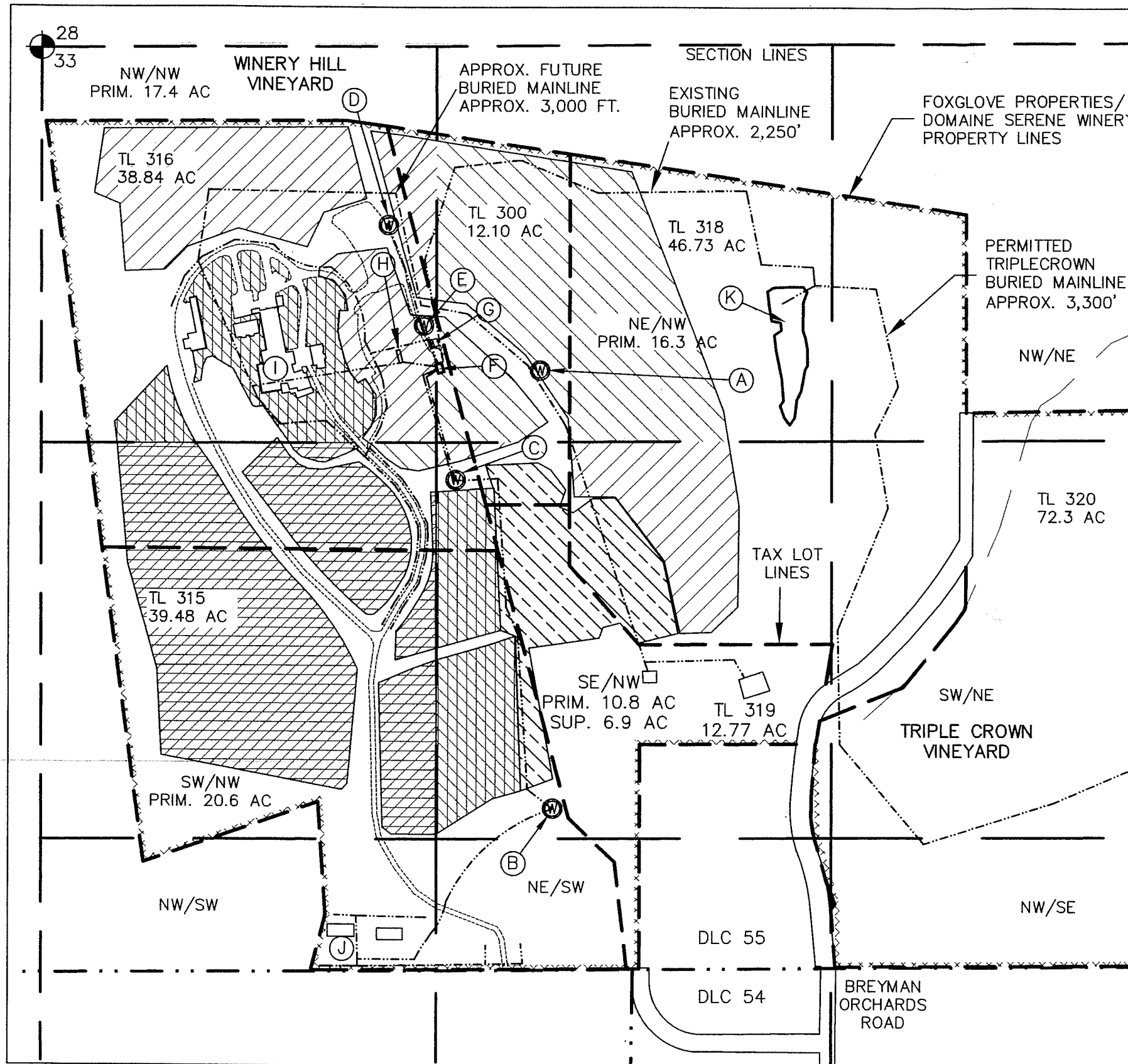


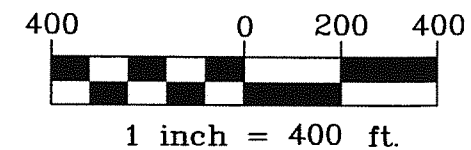
CONTACT: OPERATIONS & FACILITIES SUPERINTENDANT,  
CHRISTOPHER RAMSEY 503-864-4600

# GROUND WATER APPLICATION MAP

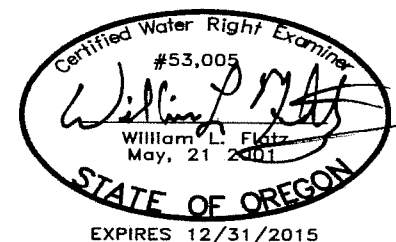
LOCATION: T3S, R3W, SEC. 33, NE/NW, TAXLOT 318.  
WILLAMETTE MERIDIAN, YAMHILL COUNTY. DLC 55



- A) PROPOSED WELL #7, 1,074' S. AND 1,642' E. OF NW CORNER OF SEC. 33.
- B) POD G-11841, WELL #1, 2,520' S. AND 1,680' E. OF NW CORNER OF SEC. 33.
- C) POD G-13896, WELL #2, 1,435' S. AND 1,365' E. OF NW CORNER OF SEC. 33.
- D) POD G-13896, WELL #3, 590' S. AND 1,140' E. OF NW CORNER OF SEC. 33.
- E) POD G-13896, WELL #4, 925' S. AND 1,260' E. OF NW CORNER OF SEC. 33.
- F) PUMP HOUSE WITH METERS FOR WELLS 2, 3, 4, QUARRY POND AND WELL #7.
- G) 4,000 GALLON UNDERGROUND TANK WITH 2 HP BOOSTER PUMP.
- H) 30,000 GALLON UNDERGROUND TANK WITH GRAVITY FEED TO WINERY.
- I) WINERY WITH BOOSTER PUMP SYSTEM (3 HP AND 5 HP) & COM. USE.
- J) SHOP, G-11841, INDUSTRIAL USE & IRRIGATION, METERS FOR IRR. AND DOMESTIC.
- K) POD R-87791 AND S-54831, 940' S AND 2,470' E OF NW CORNER SEC 33.



ALL IRRIGATION IS IN HENRY C. HILL DLC 55



Well #7 Irrigation Areas		
1/4 - 1/4	primary	supplemental
NW/NW	17.4	
SW/NW	20.6	
SE/NW	10.8	6.9
NE/NE	16.3	
Totals =	65.1	6.9

## LEGEND

### IRRIGATION AREAS

NOTE: ALL HATCHED AREAS ARE APPLIED FOR IRRIGATION FROM WELL #7.

30.9 ACRES, PRIMARY CERTIFICATES #87843, #88371 & WELL #7 SUPP. PERMIT S-54831

6.9 ACRES, PRIMARY PERMIT S-54831. SUPP. WELL #7

34.2 ACRES, WELL #7 APPLICATION ONLY

### LINES AND SYMBOLS

#### SECTION AND 1/4-1/4 LINES

BURIED MAINLINES, EXISTING AND PROPOSED.

DLC LINE

TAX LOT LINE

DOMAINE SERENE / FOXGLOVE VINEYARD EXTERIOR PROPERTY LINES

WELL LOCATION

GOVERNMENT MONUMENT

MAP BASED ON:  
TAX MAP: 3-3-33  
USGS DUNDEE QUAD MAP

NOTE: THIS MAP IS PRODUCED TO APPLY FOR THE BENEFICIAL USE OF A WATER RIGHT. IT IS NOT INTENDED TO PROVIDE INFORMATION RELATIVE TO THE LOCATION OF PROPERTY LINES.

APPLICANT:  
KENNETH L EVANSTAD  
FOXGLOVE PROPERTIES, LLP -  
DOMAINE SERENE VINEYARDS & WINERY

RECEIVED BY OWRD

MAY 13 2015

SALEM, OR

STUNTZNER ENGINEERING  
2137 19TH AVENUE  
FOREST GROVE, OR 97116  
503-357-5717

JOB No.: 314-082

REVISED: 4-29-15

DRAWING NAME:  
WINERYHILL GRND WATER APP.

