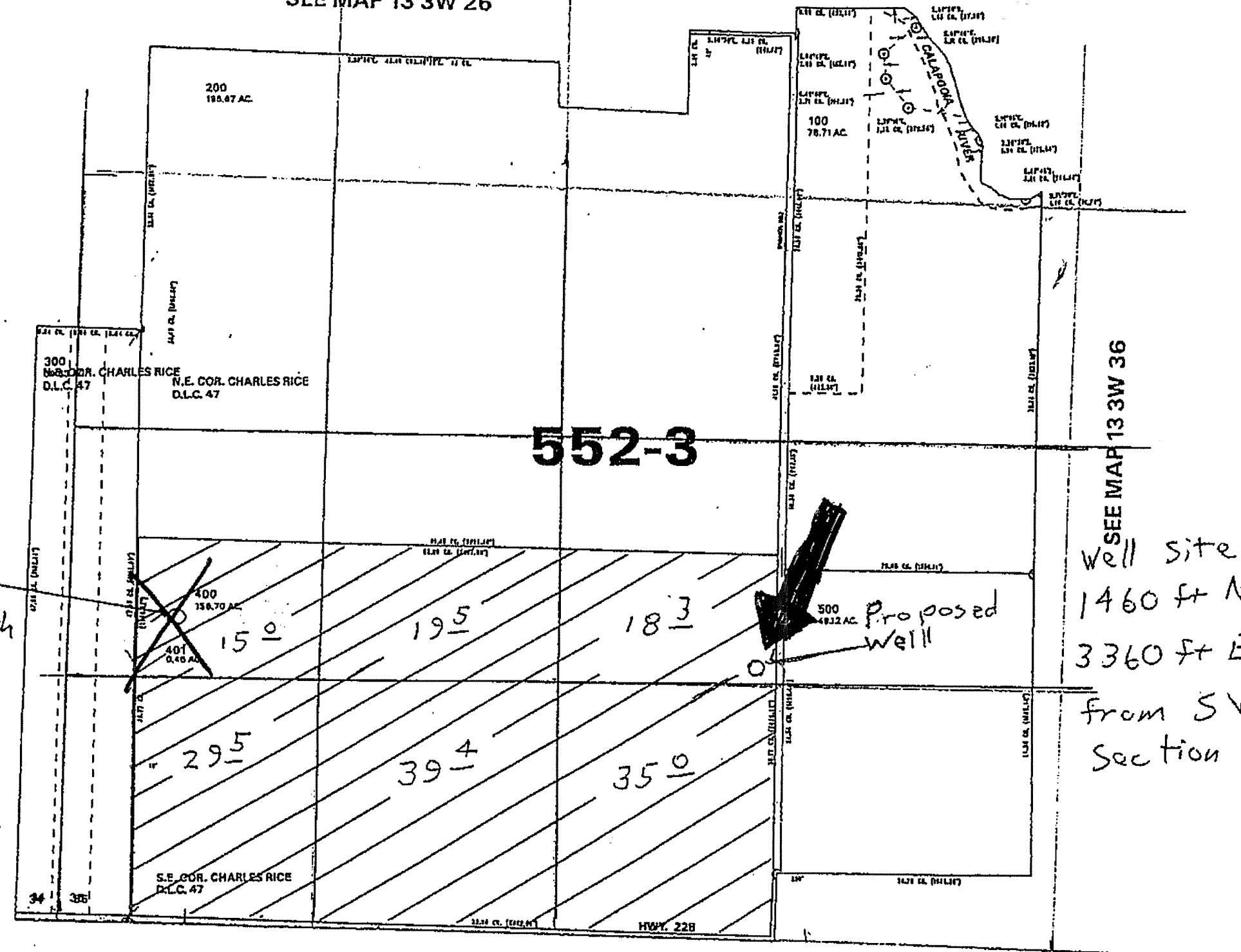


1" = 1000'

SEE MAP 13 3W 26



SEE MAP 13 3W 34

SEE MAP 13 3W 36

SEE MAP 14 3W 3

SEE MAP 14 3W 2

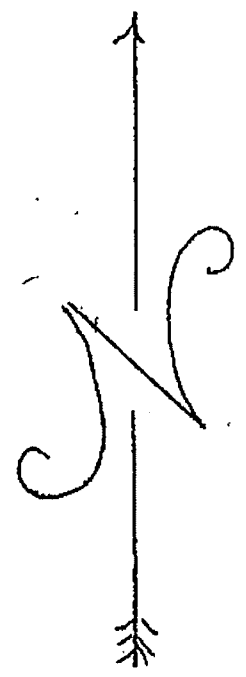
13 3W 35

10/06/00 10:07:54 E-1

10/8/15

~~Well site # 2
1550' North
and
570' East
from SW
-or Sec 35~~

Well site # 1
1460 ft N
3360 ft East
from SW corner
Section 35



G-17956
Rec'd Oct 31, 2015

SECTION 11 T.14S. R.4W. W.M. SEE MAP 14 4W 2

14S04W11
LINN COUNTY

CROOK CR.

CROOK CR.

S.P.R.R.

CANCELLED:

10/8/15

1" = 600'

TAX LOT 200

Well 1940 S
70' W

from NE cor SEC 11

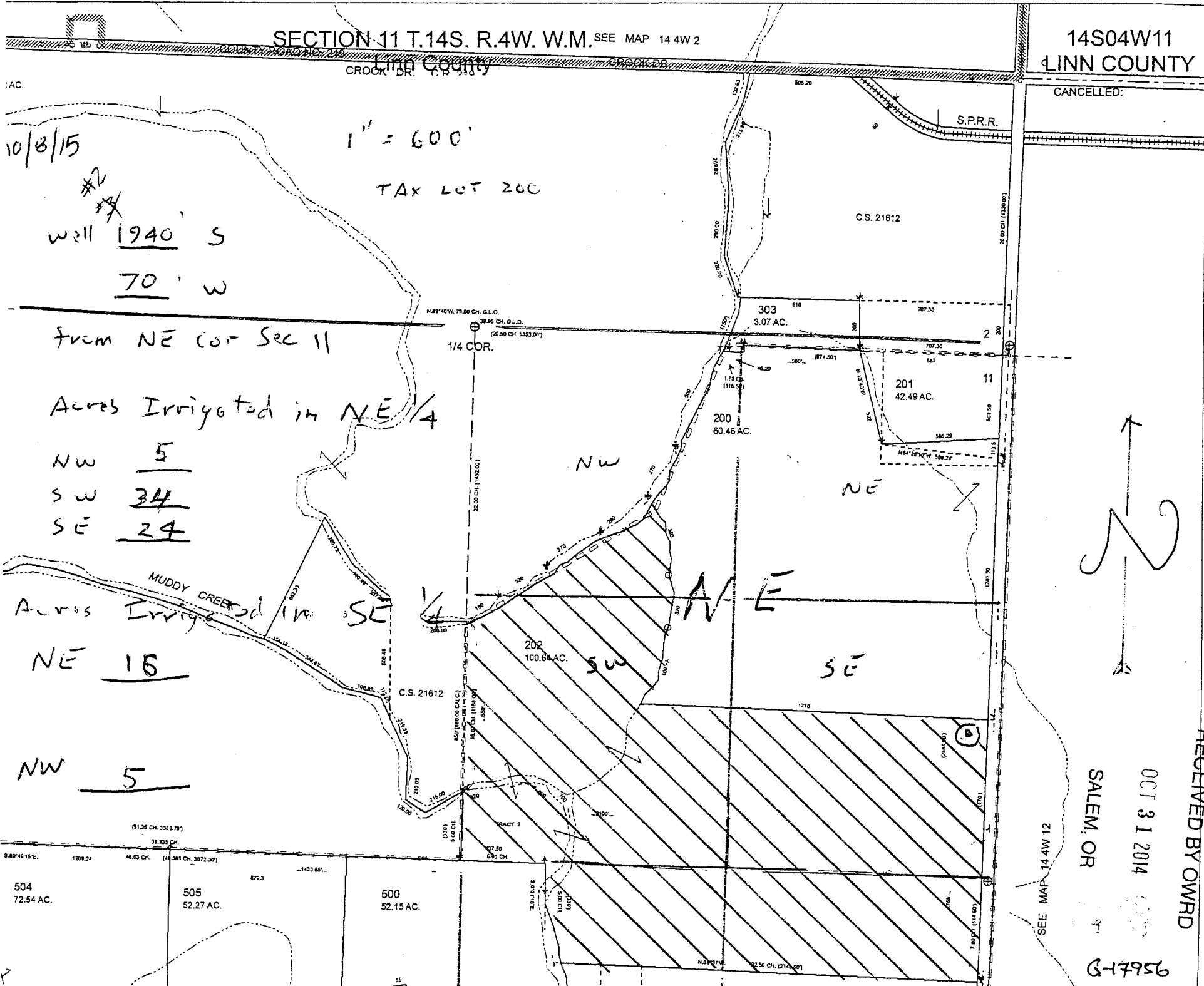
Acres Irrigated in NE 1/4

NW 5
SW 34
SE 24

Across Irrig Muddy Creek in SE

NE 16

NW 5



RECEIVED BY OWRD

OCT 31 2014

SALEM, OR

G-17956

SEE MAP 14 4W 12