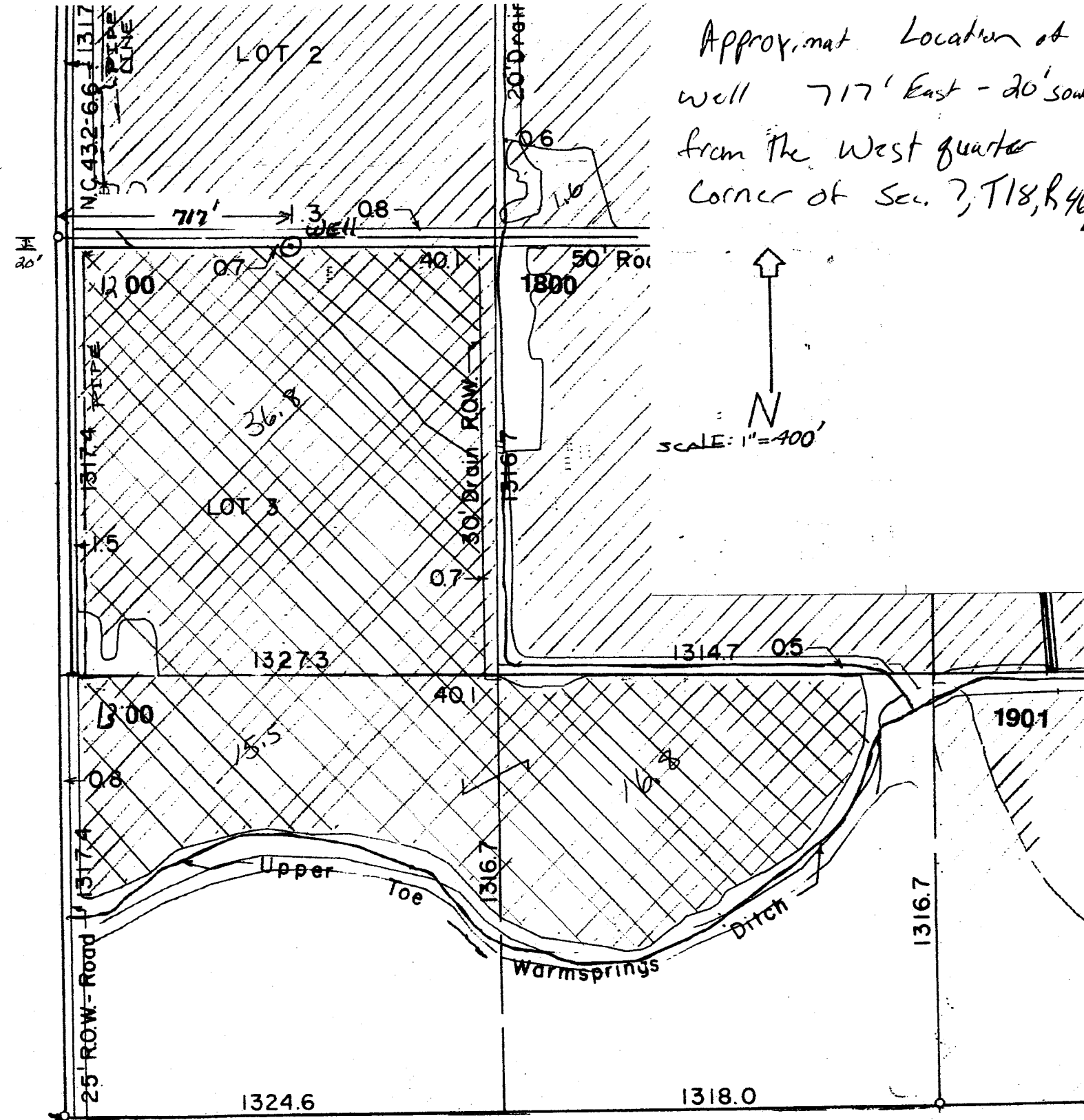


Approx. mat. Location of well 717' East - 20' south from the West quarter corner of Sec. 7, T18, R46E

N
SCALE: 1" = 400'



SW corner of - **SEC. 7 - T.18S. - R.46E. - W.M.**

RECEIVED BY OWRD

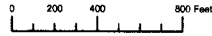
REVISED 12-96

FEB 17 2015

G-17889

SALEM, OR

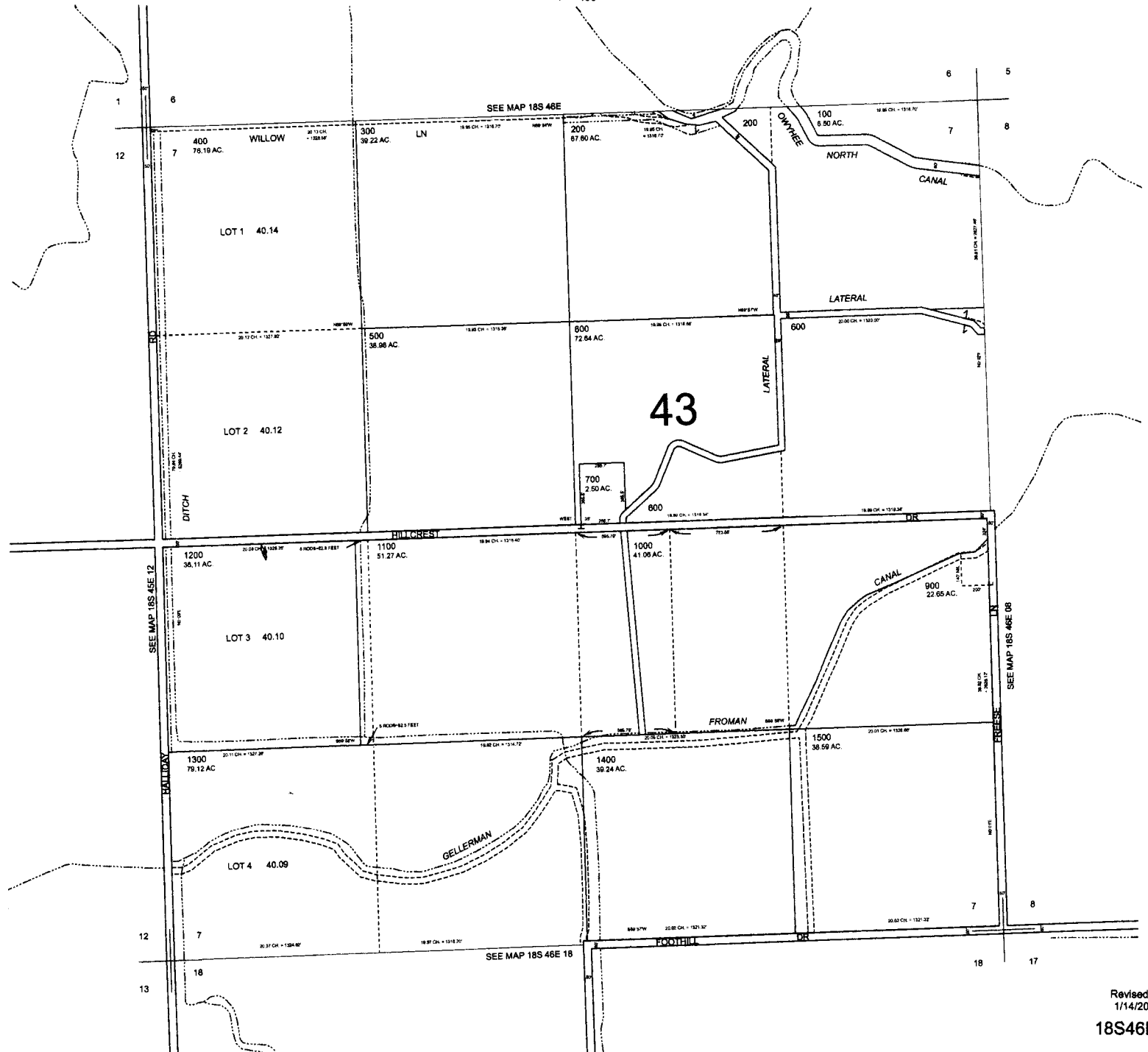
THIS MAP WAS PREPARED FOR ASSESSMENT PURPOSE ONLY



SECTION 7 T.18S. R.46E. W.M.
MALHEUR COUNTY
1" = 400'

18S46E07

CANCELLED:
800



RECEIVED BY OWRD

FEB 17 2015

SALEM, OH

G-1779

Revised MA
1/14/2008

18S46E07