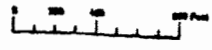


USE THIS TO LOCATE WELL

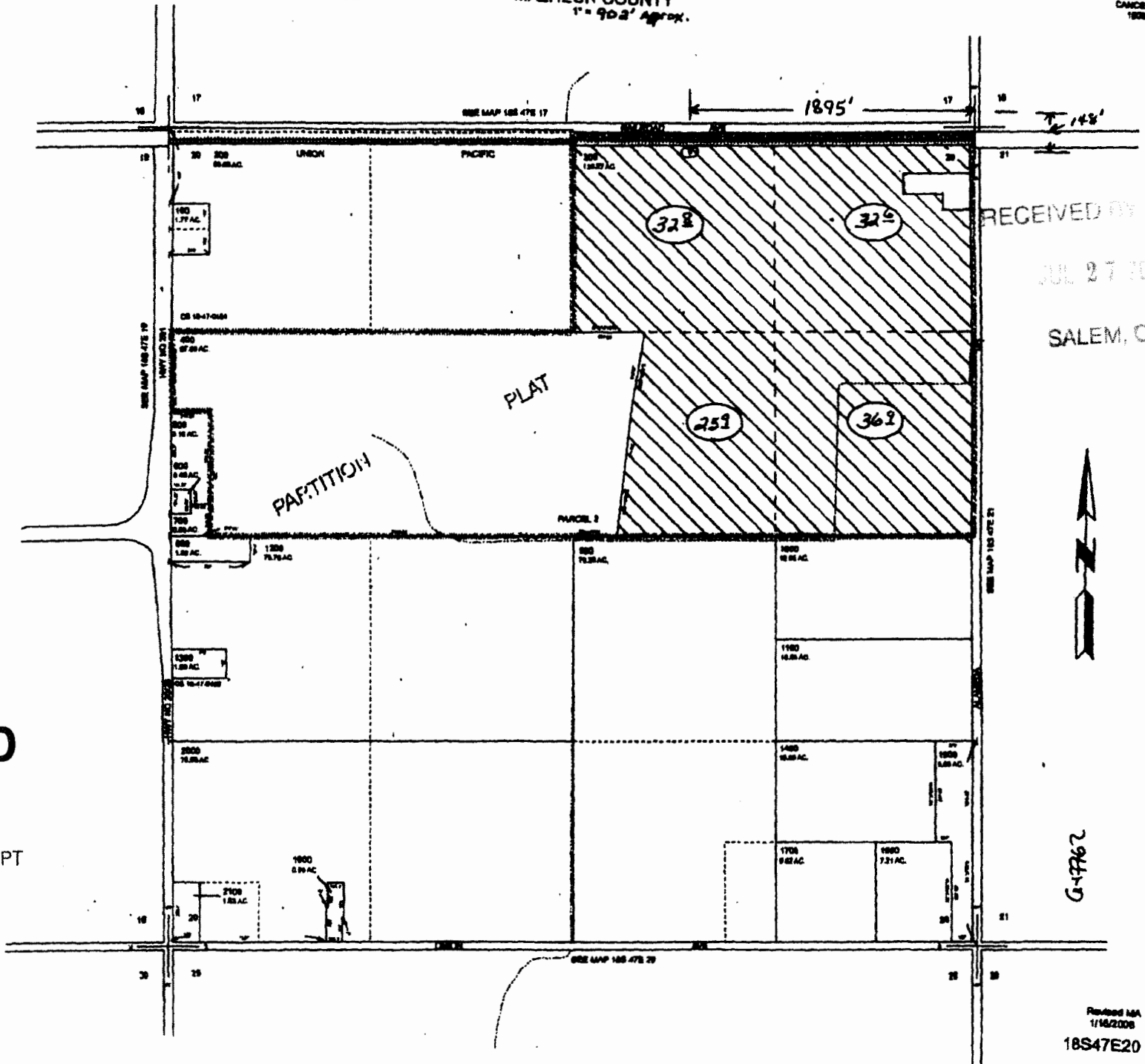
THIS MAP WAS PREPARED FOR ASSESSMENT PURPOSE ONLY



SECTION 20 T.18S. R.47E. W.M.
MALHEUR COUNTY
1" = 90.2' Approx.

18S47E20
CANCELLED:
1928

G-18126



RECEIVED BY OWRD

JUL 27 2015

SALEM, OR



G-47762

RECEIVED

AUG 10 2015

WATER RESOURCES DEPT
SALEM, OREGON

Revised 18A
1/16/2008
18S47E20