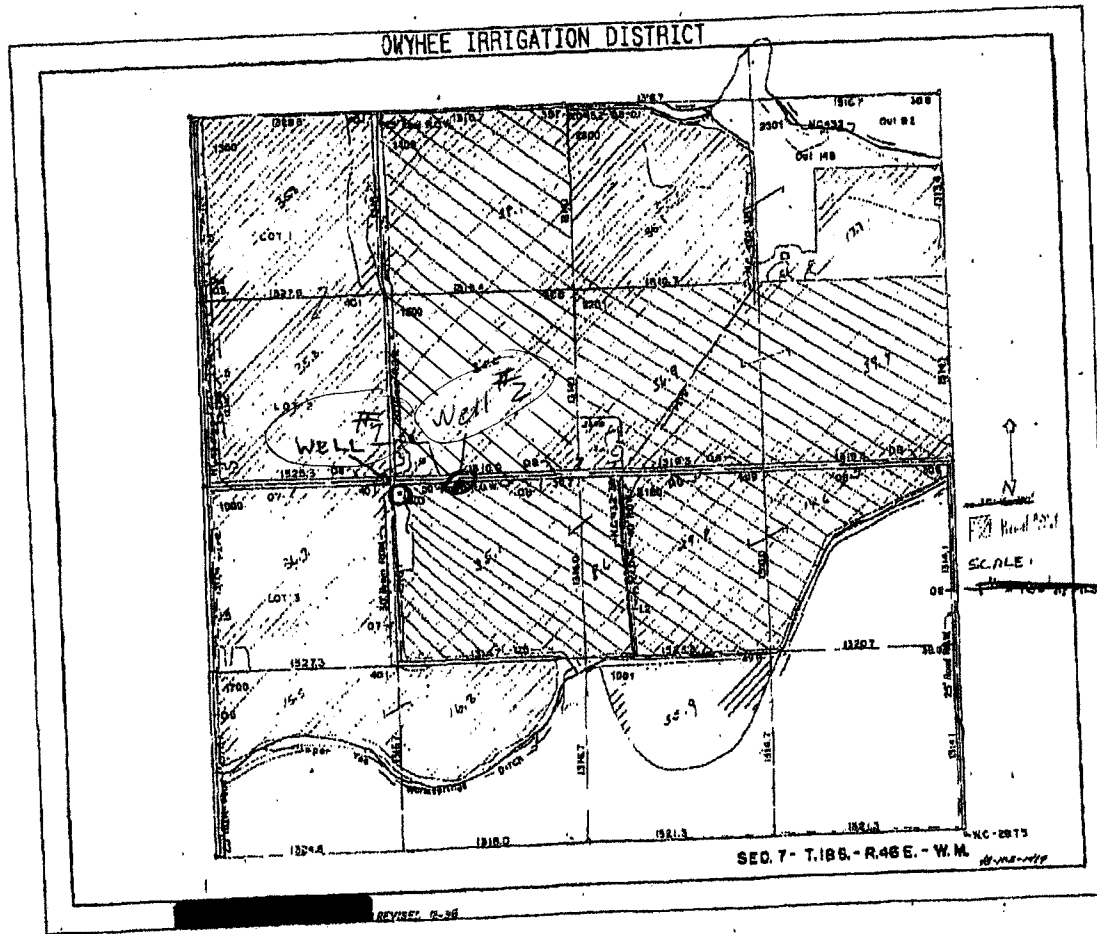


G-18004



WELL #2 LOCATION
 2,535' N & 1,386' E
 from SW corner of
 SEC 7, T-18S R-46E

Should be 46
 E.

MJE, 3/25/2014

well #2
 well location
 2,605' N & 1,848' E
 from SW corner of
 SEC 7 T-18S, R 46E

G-1780

RECEIVED BY OWRD

FEB 23 2015

SALEM, OR

SCALE

1 inch = 1,320 feet Appr.

RECEIVED BY OWRD

MAR 20 2014

SALEM, OR

RECEIVED BY OWRD

MAR 10 2014

SALEM, OR