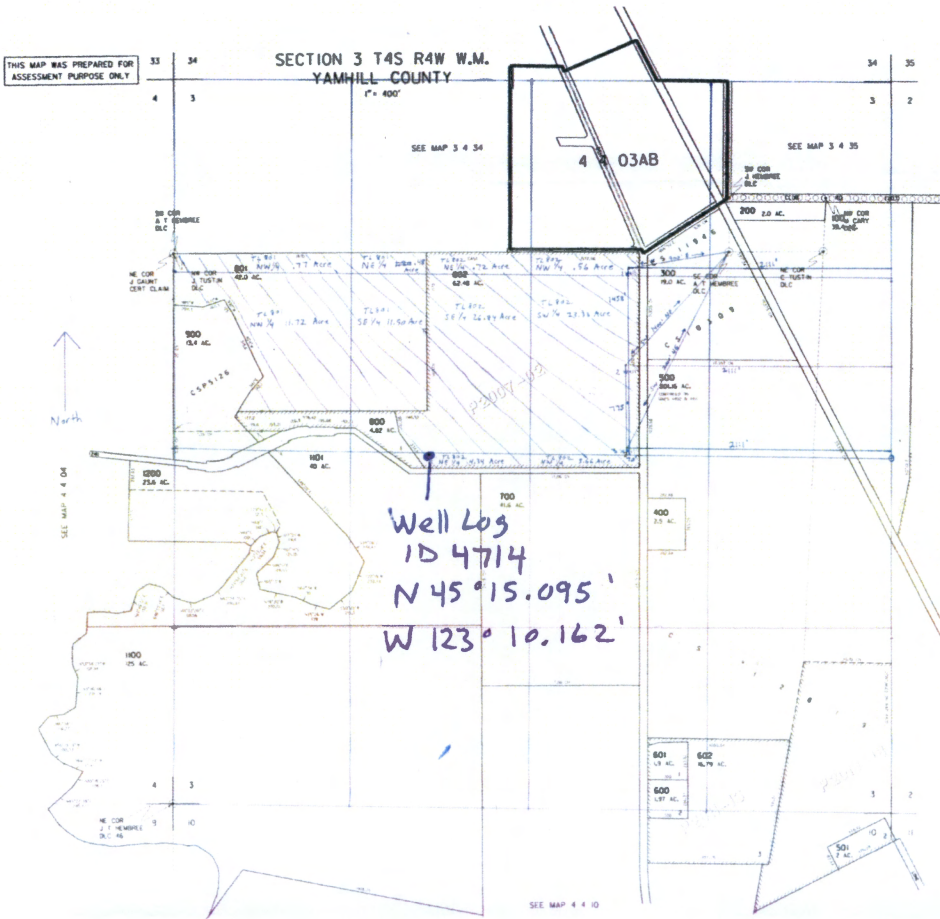


THIS MAP WAS PREPARED FOR ASSESSMENT PURPOSE ONLY

SECTION 3 T4S R4W W.M.
YAMHILL COUNTY

4 4 03
& INDEX

CANCELLED
1900



4 4 03

RECEIVED BY OWRD

RECEIVED

MAY 12 2016

SALEM, OR

RECEIVED BY OWRD

APR 27 2016

SALEM, OR