

6-18-2016

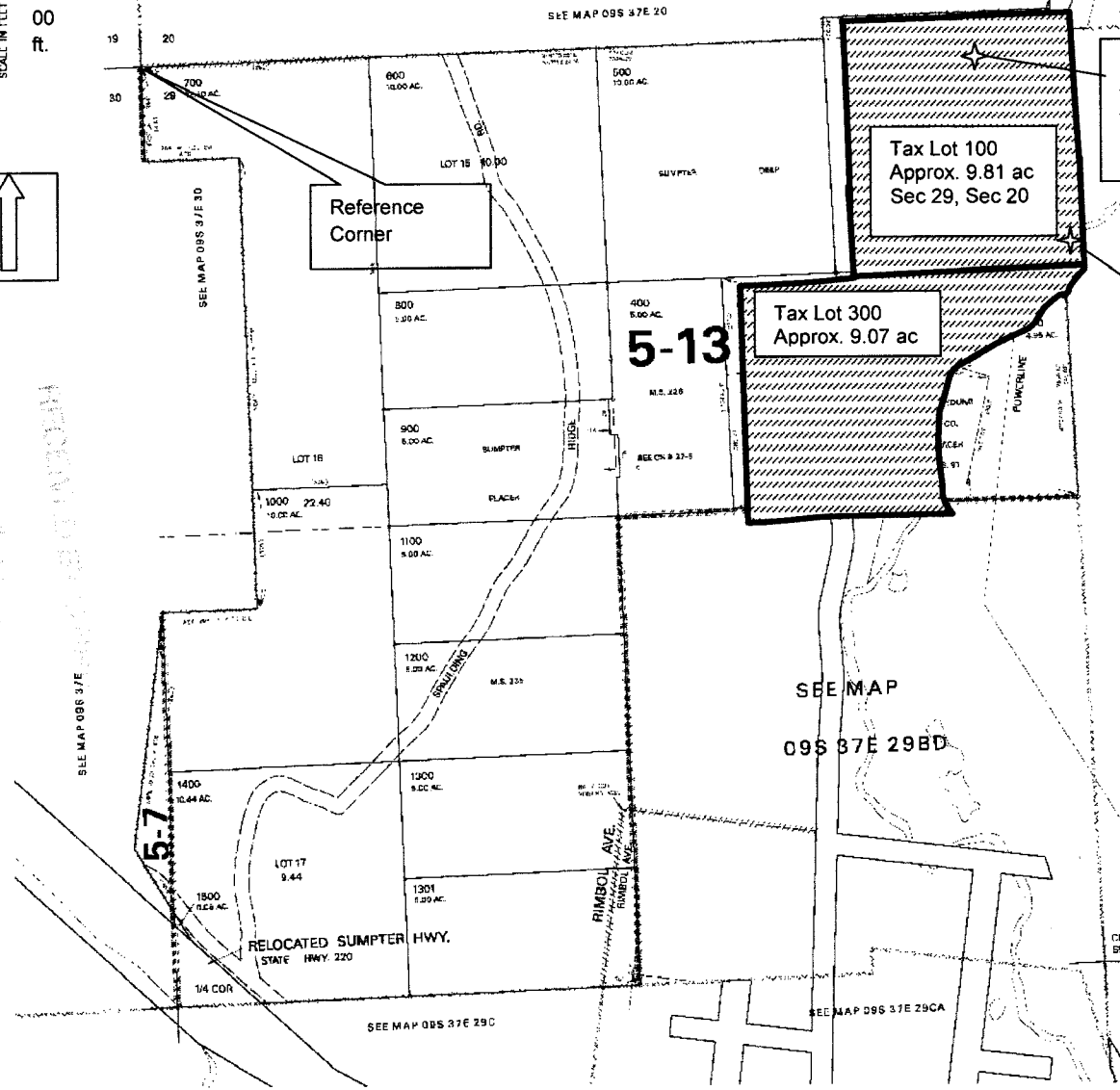
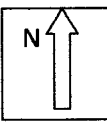
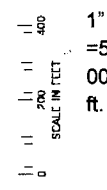
Eureka Mine Area of Beneficial Use

Quarter Quarter of Beneficial Use:
 NE NW Sec 29
 Tax Lots: 100,300

SE SW Sec 20
 Tax Lot: 100

NW1/4 SECTION 29 T.09S. R.37E. W.M.
 BAKER COUNTY

09S 37E 29B
 & INDEX



Tax Lot 100
 Approx. 9.81 ac
 Sec 29, Sec 20

Well #1
 Approx. 2240' East
 Approx. 40' South
 From Ref Corner:
 NW Corner Sec 29

Tax Lot 300
 Approx. 9.07 ac

Well #2
 Approx. 2520' East
 Approx. 585' South
 From Ref Corner:
 NW Corner Sec 29

5-13

5-7

PRINTED ON
 02/14/07

09S 37E 29B
 & INDEX