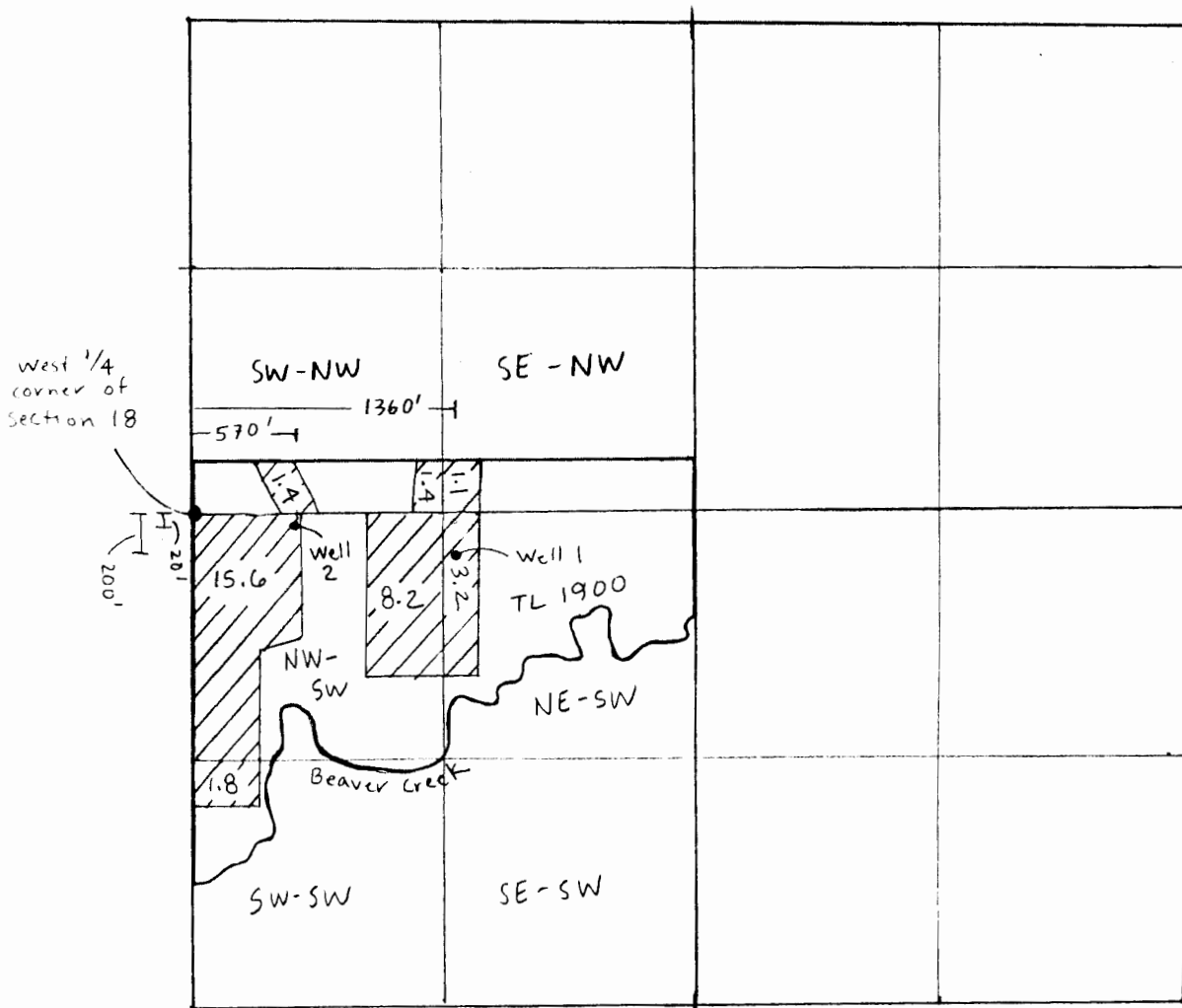


T 3 S, R 2 E Section 18

Well 1 located 1360' E, 200' S fr W 1/4 cor S. 18

Well 2 located 570' E, 20' S fr. W 1/4 cor S. 18

// Area to be irrigated



Scale 1" = 1000'

RECEIVED

FEB 29 2016

WATER RESOURCES DEPT
SALEM, OREGON

G-18201