

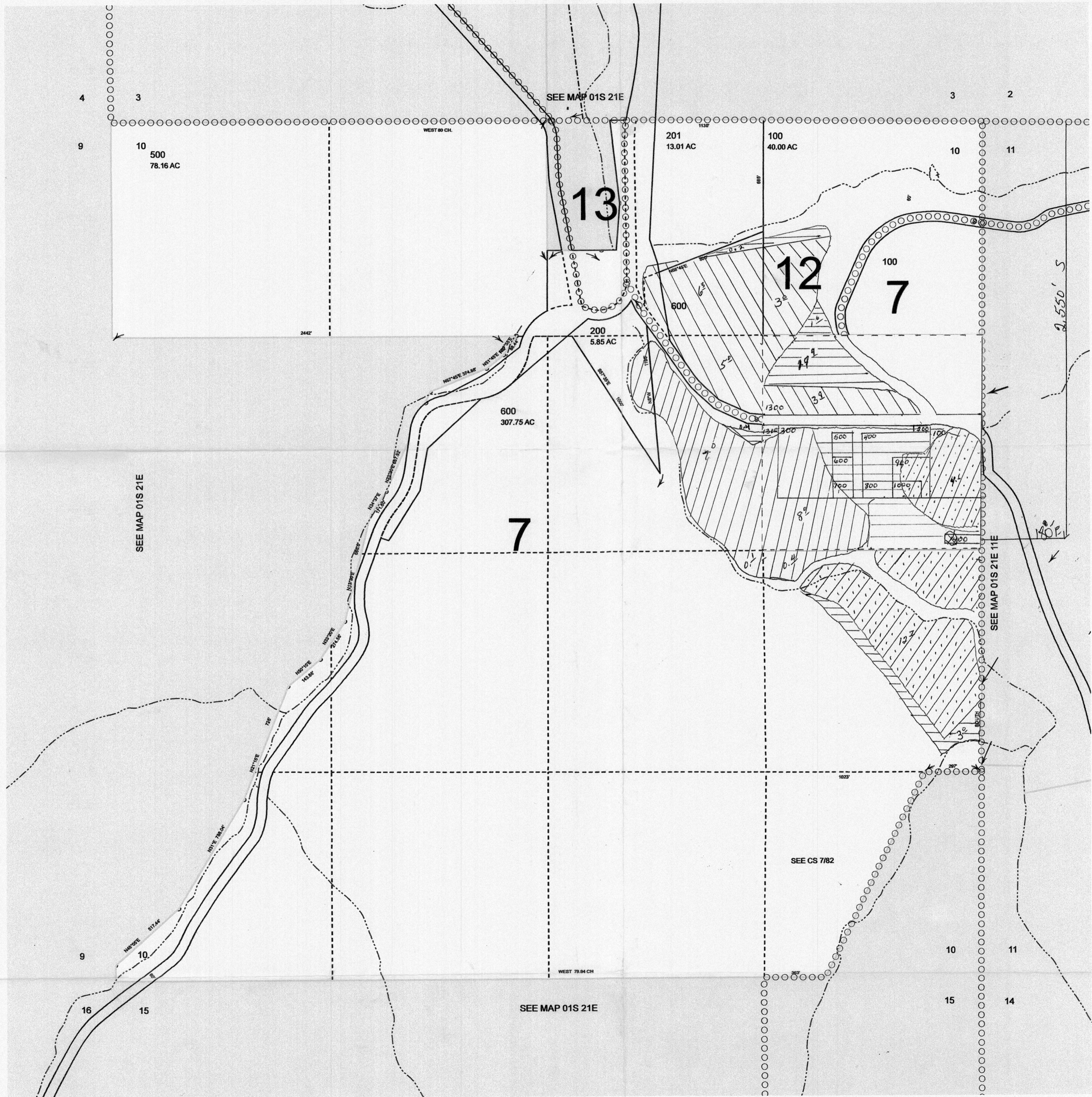
THIS MAP WAS PREPARED FOR ASSESSMENT PURPOSE ONLY

SECTION 10 T.1S. R.21E. W.M.  
GILLIAM COUNTY

1" = 400'

01S21E10

LCATDWC - 2013-06-24 11:25



CANCELLED  
300  
400  
501

Cert. 25756  
Supp' well

Cert. 42183  
Cert. 54169  
Supp' well

Cert. 56645  
Supp' well

primary  
well

⊗ WELL  
2550'S & 180'E of  
NE Corner Section 10

RECEIVED BY OWRD  
MAR 25 2016  
SALEM, OR

01S21E10