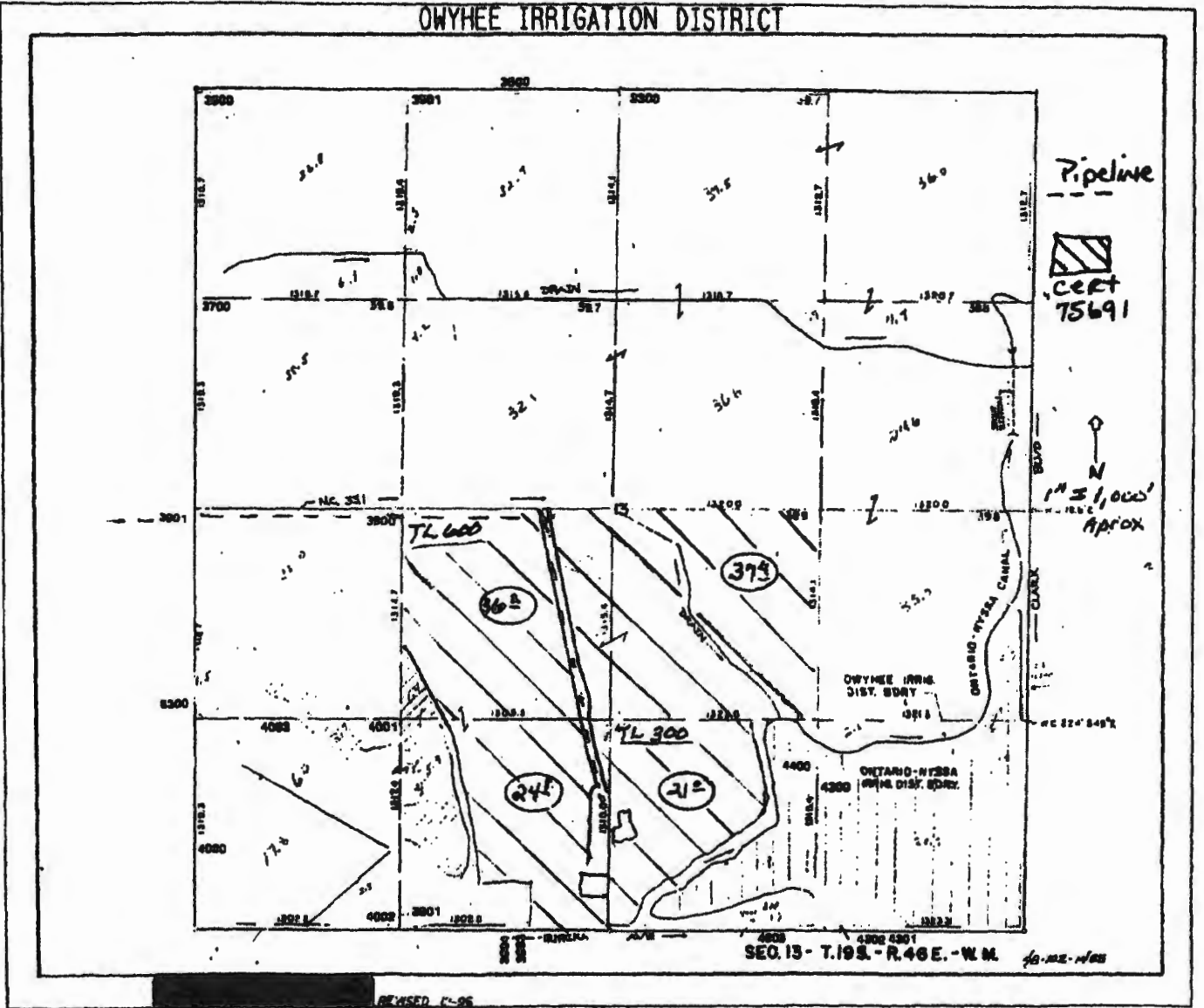


G-10206

OWYHEE IRRIGATION DISTRICT



RECEIVED BY OWRD


JAN 29 2016

SALEM, OR

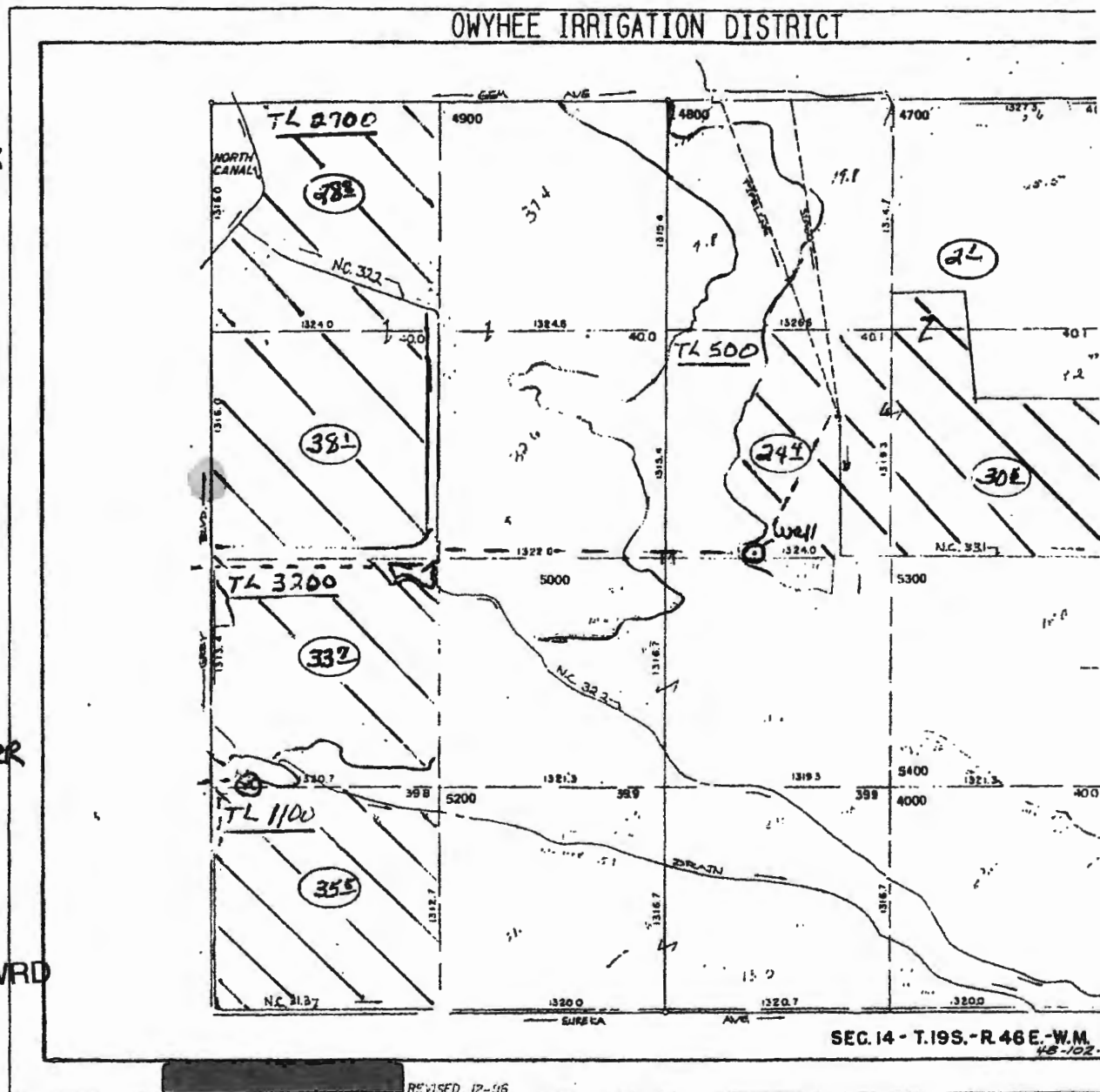
RECEIVED BY OWRD

MAR 03 2016

SALEM, OR

Scott 1 
Well location
From NW corner
2600' South
Then
3160' East

Kesler H
well location
From SW corner
380' N
Then
300' East



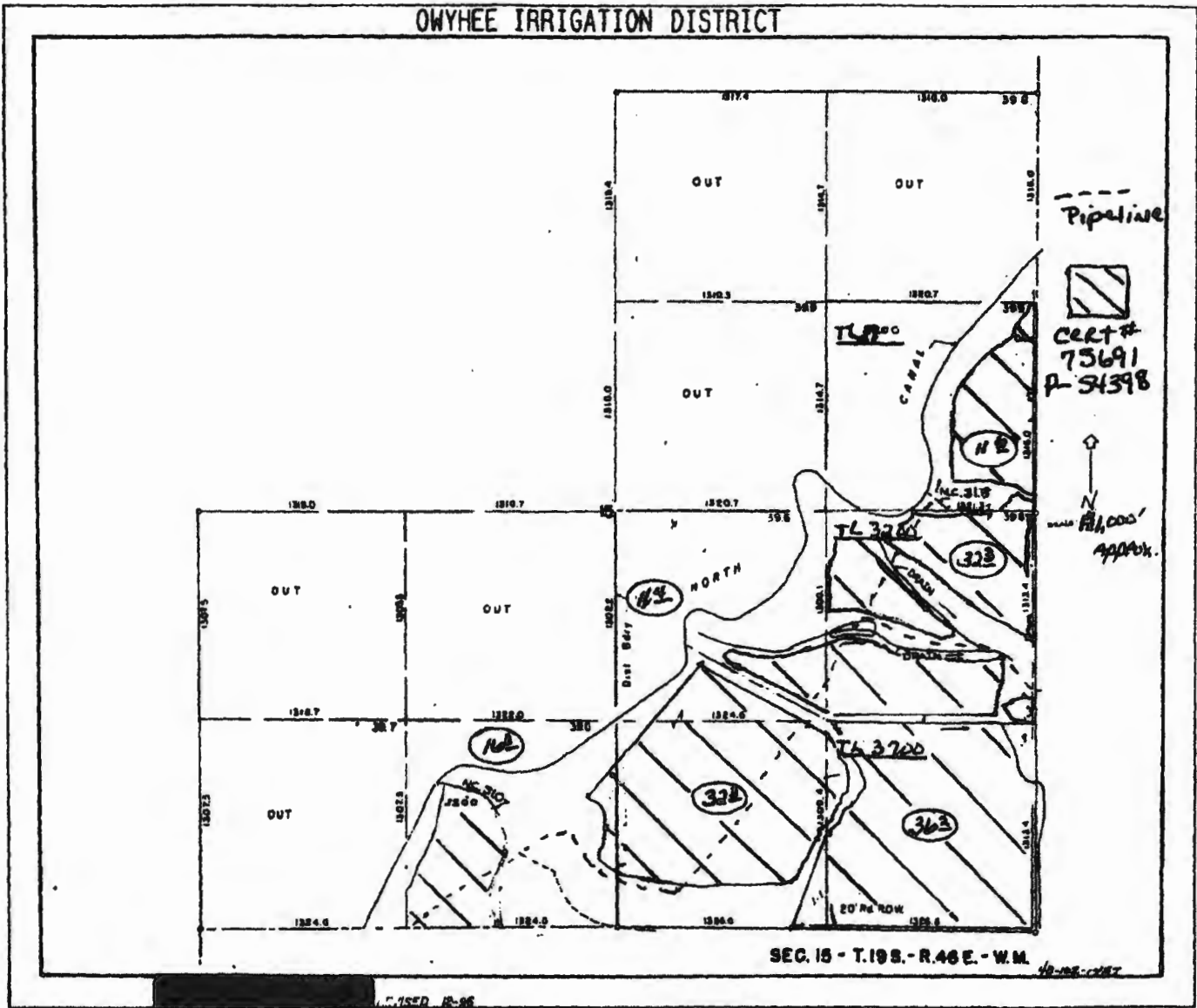
RECEIVED BY OWRD

JAN 29 2016

SEC. 14 - T. 19S. - R. 46E. - W.M.
48-102.

SALEM, OR
G-18206

OWYHEE IRRIGATION DISTRICT



RECEIVED BY OWRD

MAR 03 2016

SALEM, OR

RECEIVED BY OWRD

JAN 29 2015

SALEM, OR

6-10206