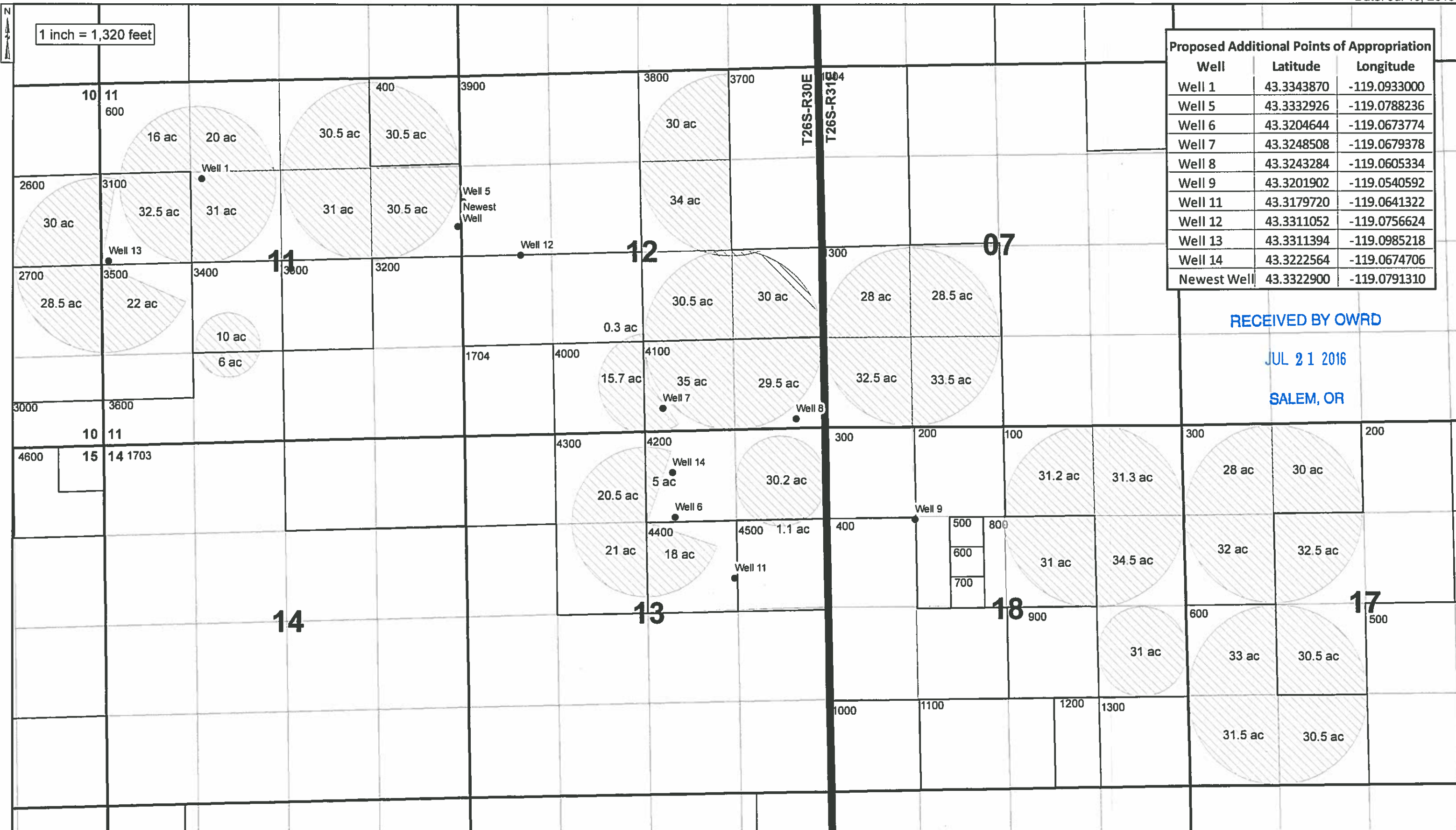


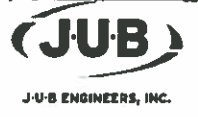
PERMIT AMENDMENT APPLICATION
 PROPOSED POU/POA FOR PERMIT G-16241
 TOWNSHIP 26 SOUTH, RANGE 30 & 31 EAST, WILLAMETTE MERIDIAN
 Sunnyside Dairy - Harney County

Date: Jul 10, 2016



Proposed Additional Points of Appropriation		
Well	Latitude	Longitude
Well 1	43.3343870	-119.0933000
Well 5	43.3332926	-119.0788236
Well 6	43.3204644	-119.0673774
Well 7	43.3248508	-119.0679378
Well 8	43.3243284	-119.0605334
Well 9	43.3201902	-119.0540592
Well 11	43.3179720	-119.0641322
Well 12	43.3311052	-119.0756624
Well 13	43.3311394	-119.0985218
Well 14	43.3222564	-119.0674706
Newest Well	43.3322900	-119.0791310

RECEIVED BY OWRD
 JUL 21 2016
 SALEM, OR

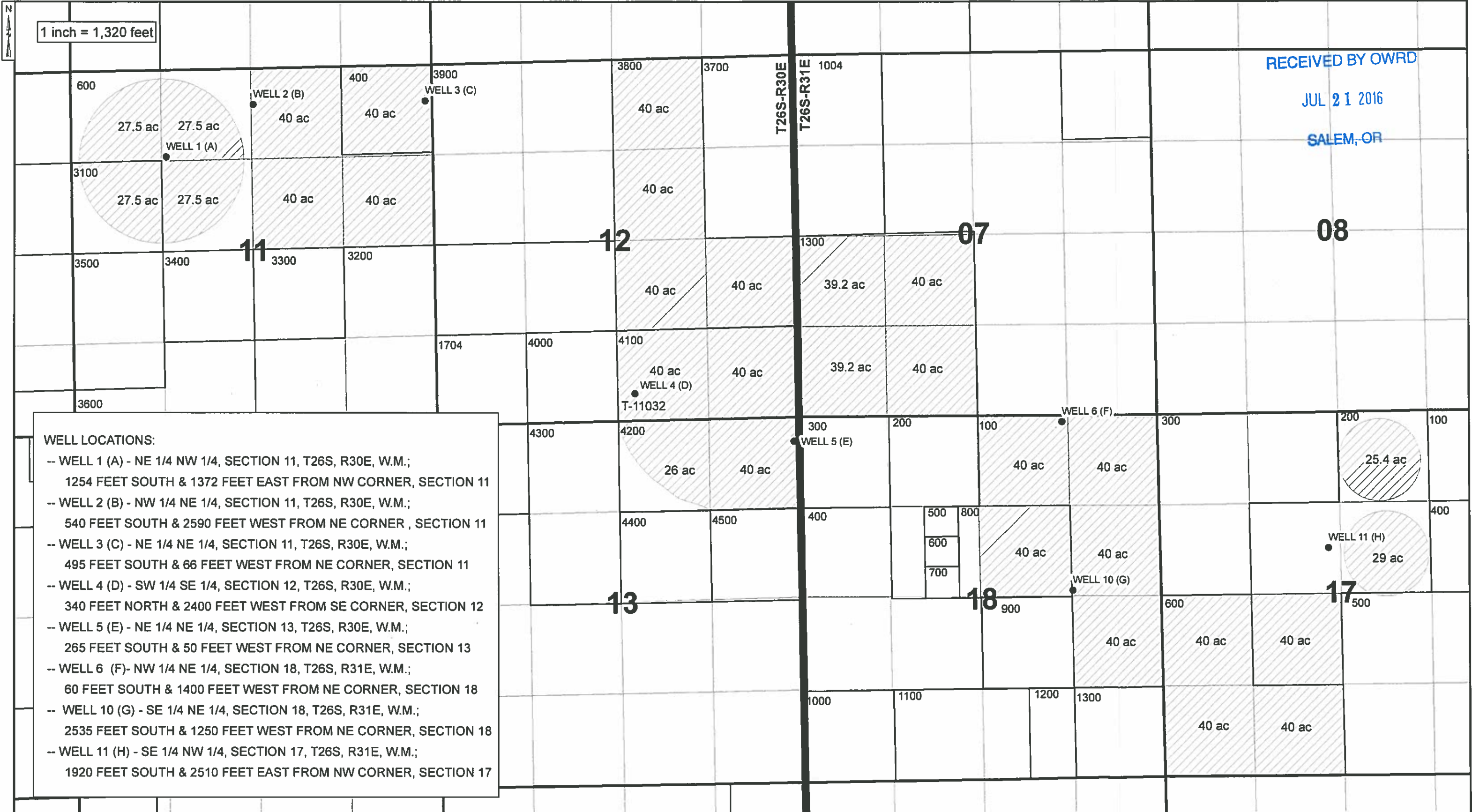


THE PURPOSE OF THIS MAP IS TO IDENTIFY THE LOCATION OF THE WATER RIGHT. IT IS NOT INTENDED TO PROVIDE INFORMATION RELATED TO THE LOCATION OF PROPERTY OWNERSHIP BOUNDARY LINES.

12438

2016 PERMIT AMENDMENT
 AUTHORIZED POU/POA FOR PERMIT G-16241
 TOWNSHIP 26 SOUTH, RANGE 30 & 31 EAST, WILLAMETTE MERIDIAN
 Sunnyside Dairy - Harney County

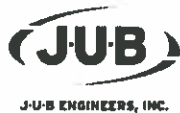
Date: Jul 18, 2016



RECEIVED BY OWRD
 JUL 21 2016
 SALEM, OR

WELL LOCATIONS:

- WELL 1 (A) - NE 1/4 NW 1/4, SECTION 11, T26S, R30E, W.M.;
1254 FEET SOUTH & 1372 FEET EAST FROM NW CORNER, SECTION 11
- WELL 2 (B) - NW 1/4 NE 1/4, SECTION 11, T26S, R30E, W.M.;
540 FEET SOUTH & 2590 FEET WEST FROM NE CORNER, SECTION 11
- WELL 3 (C) - NE 1/4 NE 1/4, SECTION 11, T26S, R30E, W.M.;
495 FEET SOUTH & 66 FEET WEST FROM NE CORNER, SECTION 11
- WELL 4 (D) - SW 1/4 SE 1/4, SECTION 12, T26S, R30E, W.M.;
340 FEET NORTH & 2400 FEET WEST FROM SE CORNER, SECTION 12
- WELL 5 (E) - NE 1/4 NE 1/4, SECTION 13, T26S, R30E, W.M.;
265 FEET SOUTH & 50 FEET WEST FROM NE CORNER, SECTION 13
- WELL 6 (F) - NW 1/4 NE 1/4, SECTION 18, T26S, R31E, W.M.;
60 FEET SOUTH & 1400 FEET WEST FROM NE CORNER, SECTION 18
- WELL 10 (G) - SE 1/4 NE 1/4, SECTION 18, T26S, R31E, W.M.;
2535 FEET SOUTH & 1250 FEET WEST FROM NE CORNER, SECTION 18
- WELL 11 (H) - SE 1/4 NW 1/4, SECTION 17, T26S, R31E, W.M.;
1920 FEET SOUTH & 2510 FEET EAST FROM NW CORNER, SECTION 17



THE PURPOSE OF THIS MAP IS TO IDENTIFY THE LOCATION OF THE WATER RIGHT. IT IS NOT INTENDED TO PROVIDE INFORMATION RELATED TO THE LOCATION OF PROPERTY OWNERSHIP BOUNDARY LINES.

12438