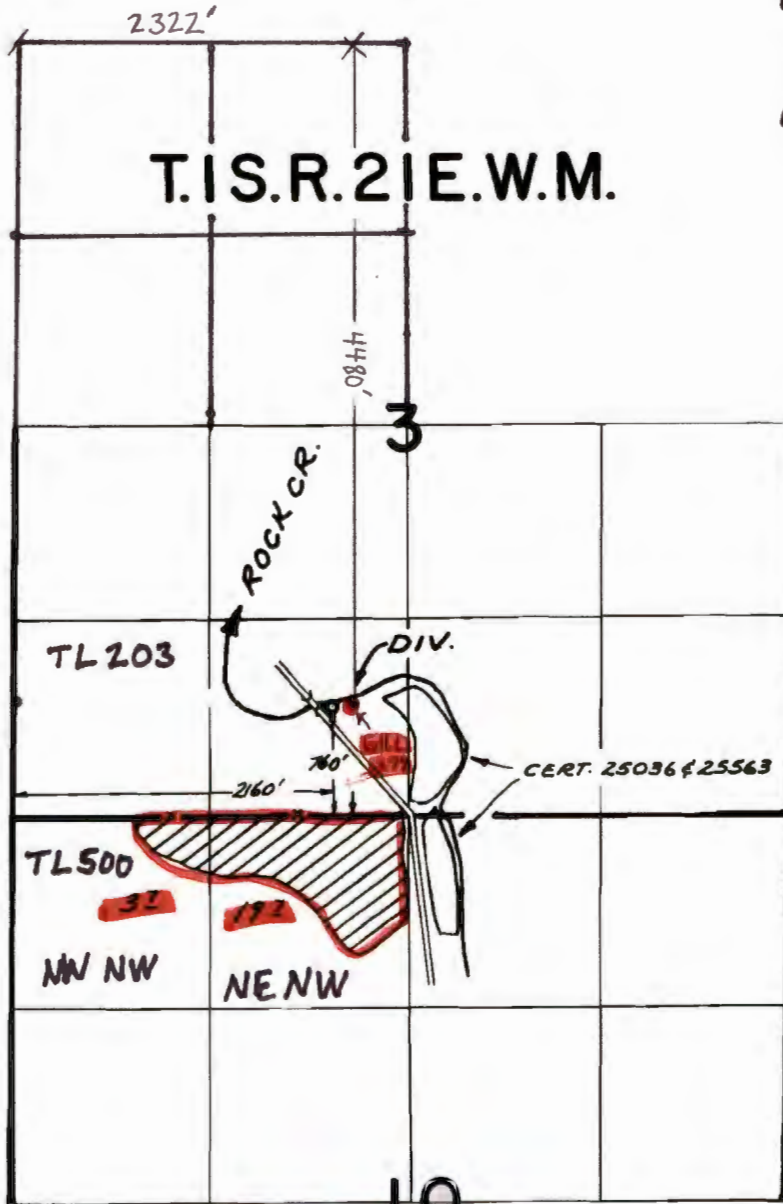


WILDE GW APPLICATION

SCALE: 1" = 1320'



WELL LOCATION (**GILL 277**) T. I. S. R. 2 | E. W. M. SEC. 3 SE SW  
 LAT: 45.50518 4480'S. & 2322'E FROM  
 LONG: -120.17897 THE NW COR. OF SEC. 3

**FINAL PROOF SURVEY**  
 UNDER

Application No. 53896 Permit No. 40215  
 IN NAME OF

ROBERT M. IRBY

Surveyed OCT. 25, 1977, by R. MUCKEN

RECEIVED BY OWRD

AUG 08 2016

SALEM, OR

G-10363

# TOWNSHIP 1 S., RANGE 21 E.

App no. G-16275

RECEIVED

JUL 16 2004

WATER RESOURCES DEPT  
SALEM, OREGON



SCALE 1" = 1320'

4

3

2322'

488'

To Arlington

To SW 1/4 SE 1/4

9°

John Day Hwy

38

TL 500

To Condon

10

OLEX

This map is for  
WELL application in  
name of TANIS JOHNSON

WELL  
450'S & 200'E FROM  
NW CORNER SEC 10

9

GILL 277 LOCATION

LAT: 45.50518 LONG: -120.17897

4,480'S & 2,322'E FROM NW CORNER OF SEC. 3

RECEIVED

SEP 15 2003

WATER RESOURCES DEPT  
SALEM, OREGON

RECEIVED

AUG 23 2016

OWPRD

ROAD ON MAP IS NOT ACCURATE WELL IS LOCATED E. OF MIDDLE ROCK CREEK LW.