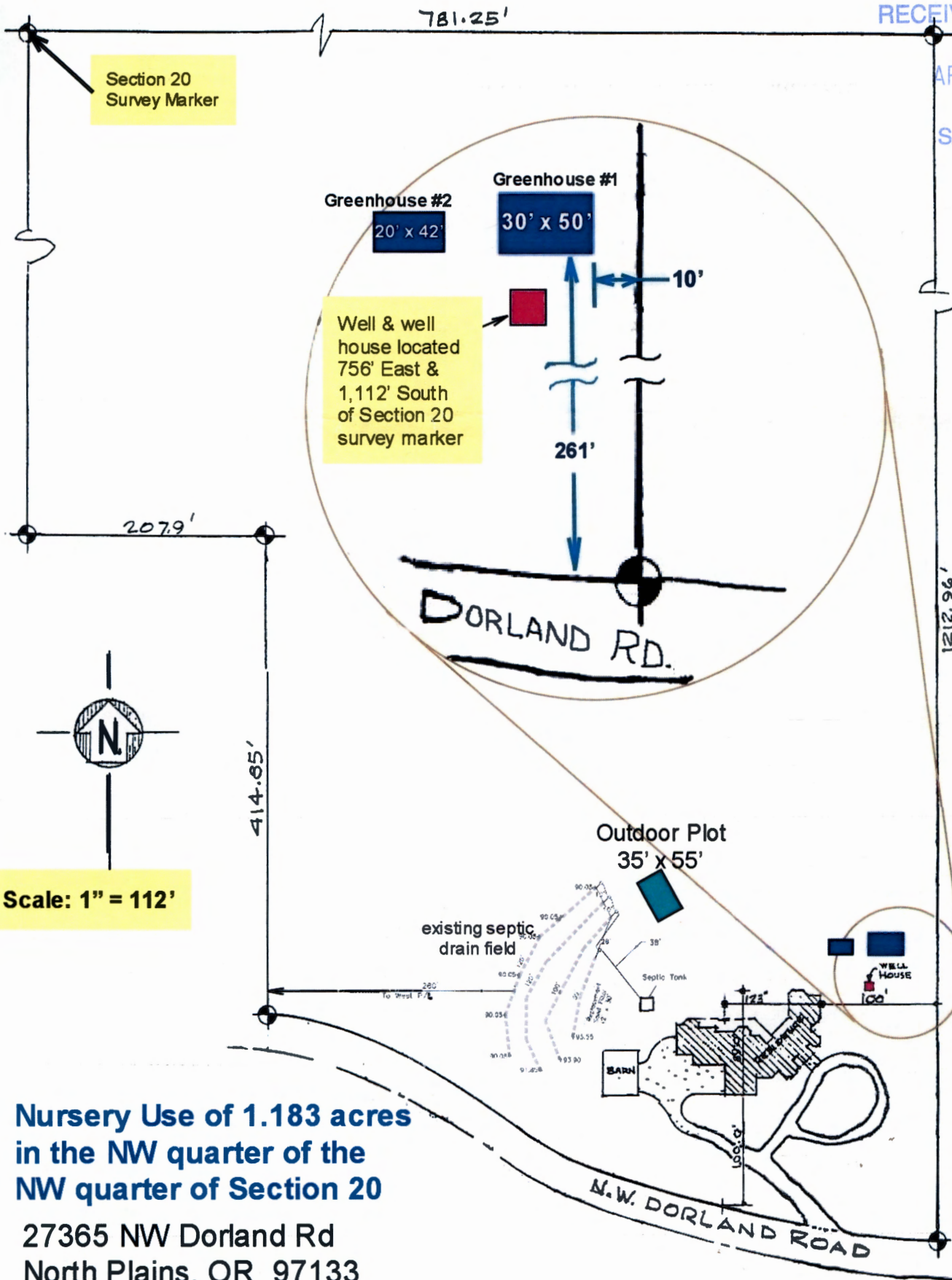


APR 13 2016

SALEM, OR



Scale: 1" = 112'

**Nursery Use of 1.183 acres in the NW quarter of the NW quarter of Section 20**

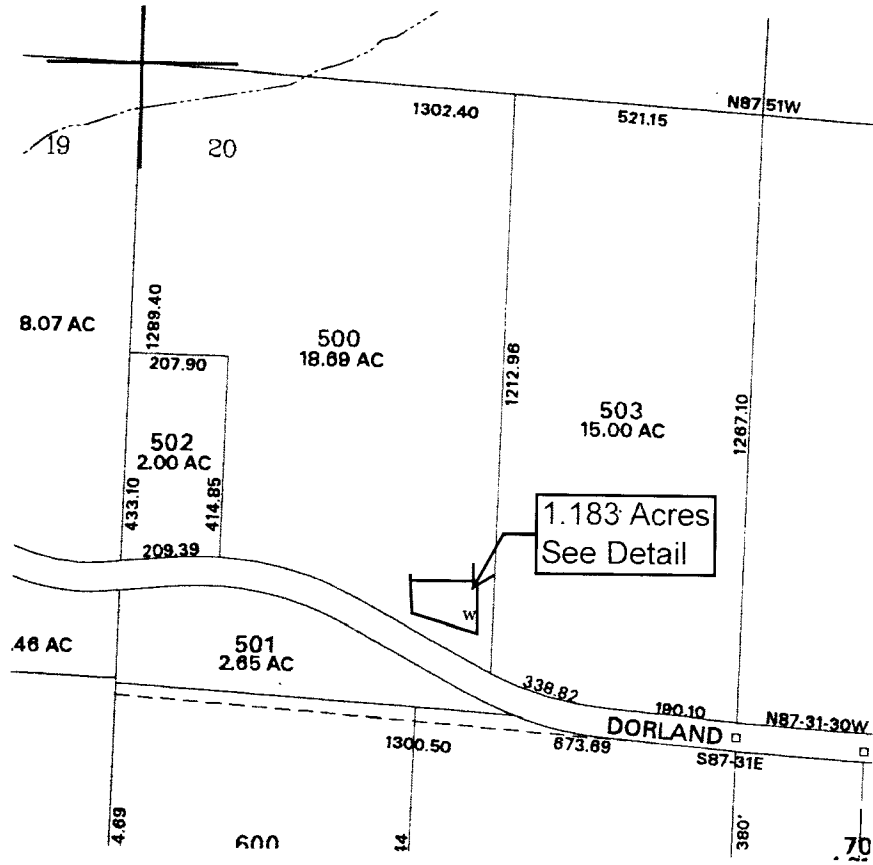
27365 NW Dorland Rd  
North Plains, OR 97133  
Washington County  
Tax Map: 2N2 20 500

5-18-2016



1" = 400'

# T 2 N, R 2 W NWNW Section 20



# RECEIVED

APR 18 2016

WATER RESOURCES DEPT  
SALEM, OREGON

Well Located 756 feet east and 1112 feet south from the NW corner of section 20