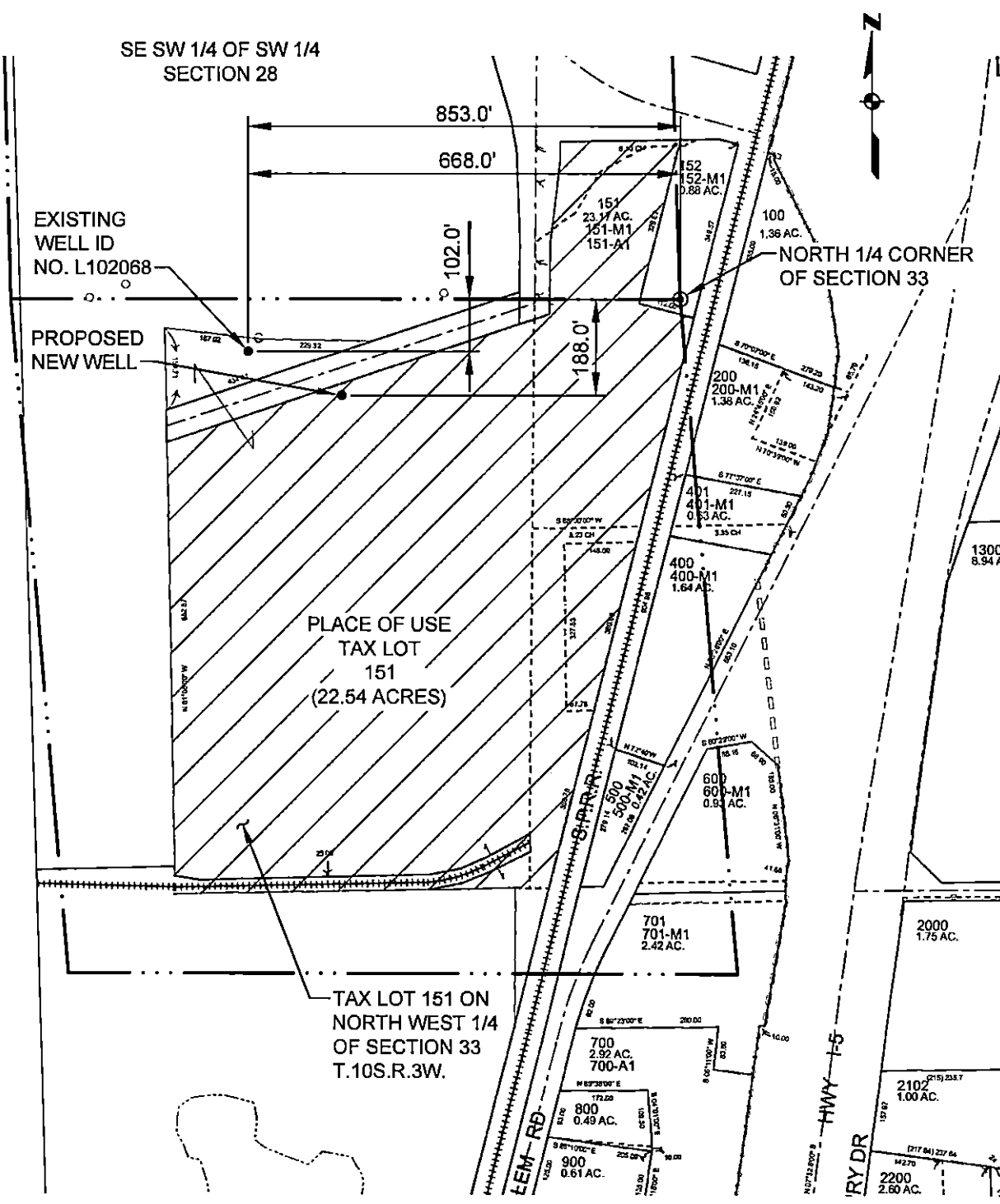


SE SW 1/4 OF SW 1/4 SECTION 28

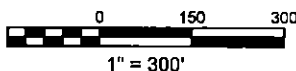


RECEIVED

JUL 22 2016

WATER RESOURCES DEPT SALEM, OREGON

GRAPHIC SCALE:



Kennedy/Jenks Consultants

ARAUCO NORTH AMERICA ALBANY, OREGON

EXISTING WELL AND NEW WELL LOCATION

JUNE 2016

FIGURE 1

P:\a1151570201.00_Arauco\10-Figure\WATER RIGHT PERMIT FIGURES\Figure 1 - Ex1 Well & New Well Location.dwg CHAD CADIENTE 07/22/2016 8:32 AM

G-18348