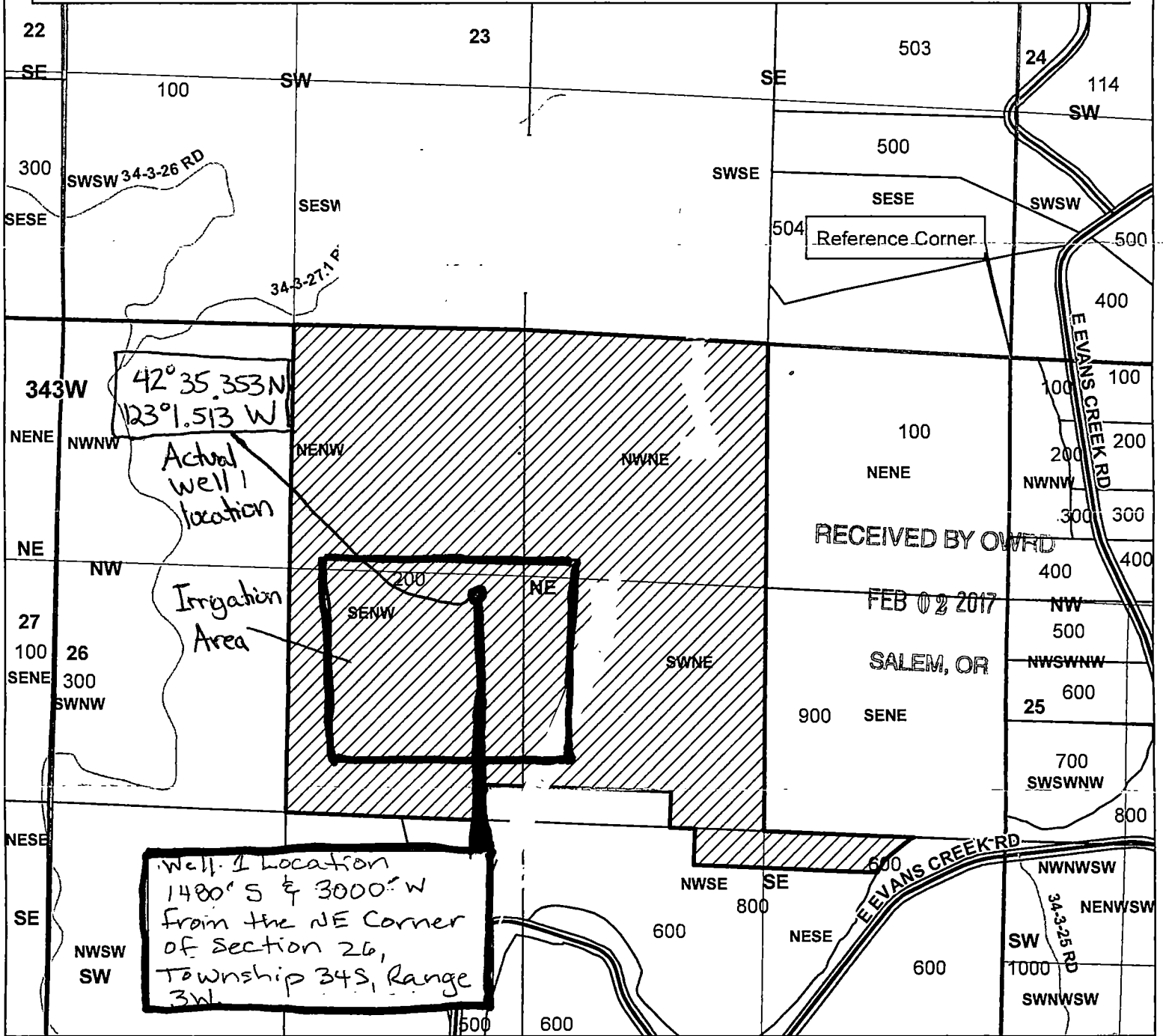


Brendan O'Hara Groundwater Application Map

34S-3W-26-tax lot 200

Place of Use for Irrigation and Nursery Uses:

NE/NW: **3.0** Acres, NW/NE: **0.8** Acres, SE/NW: **29.2** Acres,
 SW/NE: **7.0** Acres



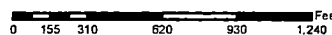
Legend

- Place of Use
- Townships
- Well 1
- Well 2
- Taxlot 200
- Taxlots
- Sections
- Quarter Sections
- Quarter Quarter Sections

RECEIVED BY OWRD 1 inch = 800 feet

APR 27 2016

SALEM, OR



JACKSON COUNTY
 WATERMASTER

Prepared by Travis Kelly

This map is based on a digital database compiled by Jackson County from a variety of sources. Jackson County cannot accept responsibility for errors, omissions, or positional accuracy. There are no warranties, expressed or implied.