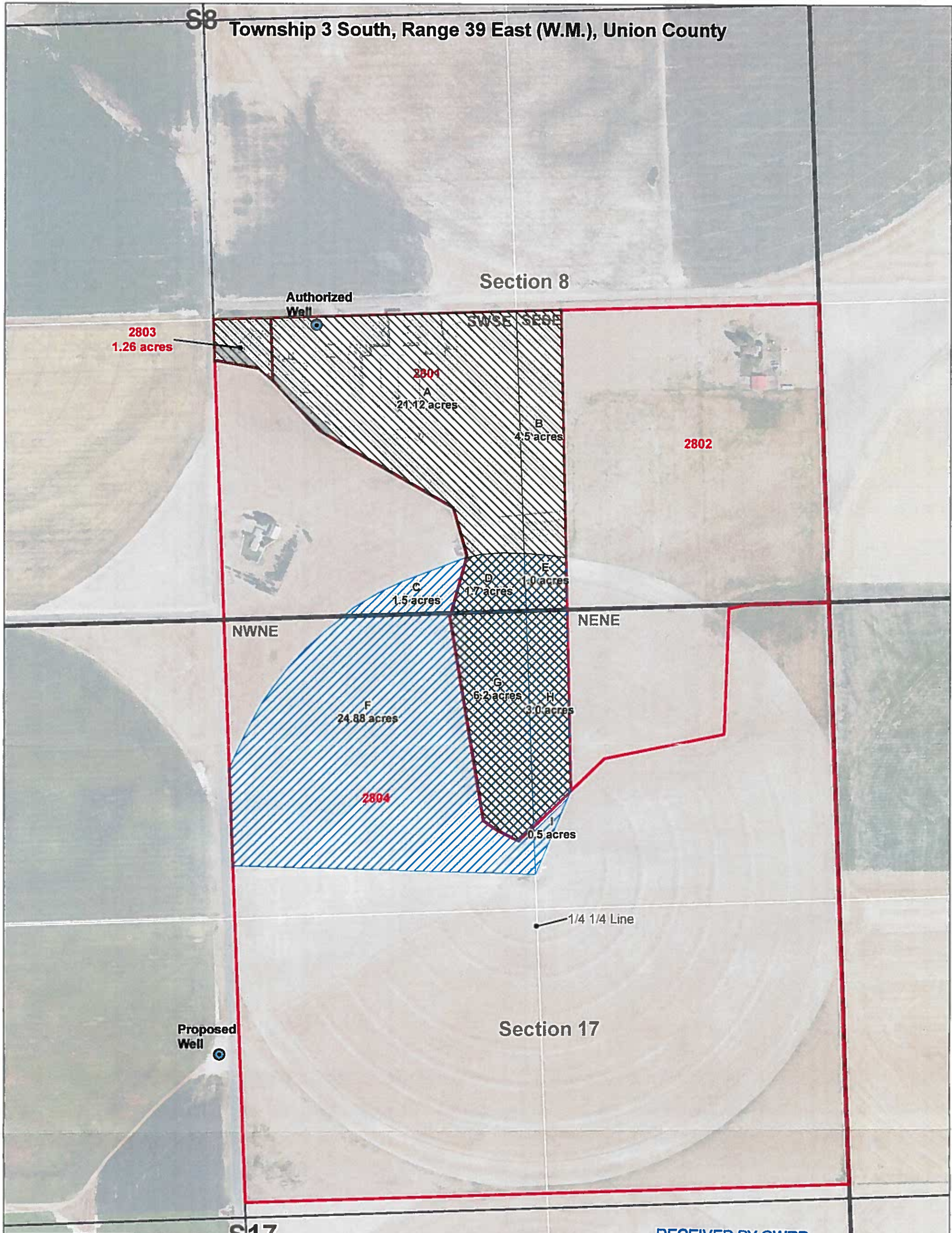


S8 Township 3 South, Range 39 East (W.M.), Union County



Legend

- Wells
- From
- To
- Tax Lot

POA LEGAL DESCRIPTIONS

Authorized Well
SWSE, Section 8, T3S, R39E, W.M. being 1400' S and 500'E from the C 1/4 corner Section 8, T3S, R39E, W.M.

Proposed Well (UNIO 52441)
SENW, Section 8, T3S, R39E, W.M.; being 1900' S and 2620'E from the NW Corner of Section 17, T3S, R39E, W.M.

RECEIVED BY OWRD

MAR 13 2017

SALEM, OR
1 inch = 400 feet



1 12607

Grande Ronde Seed Farm
G-15843 Permit Amendment Application

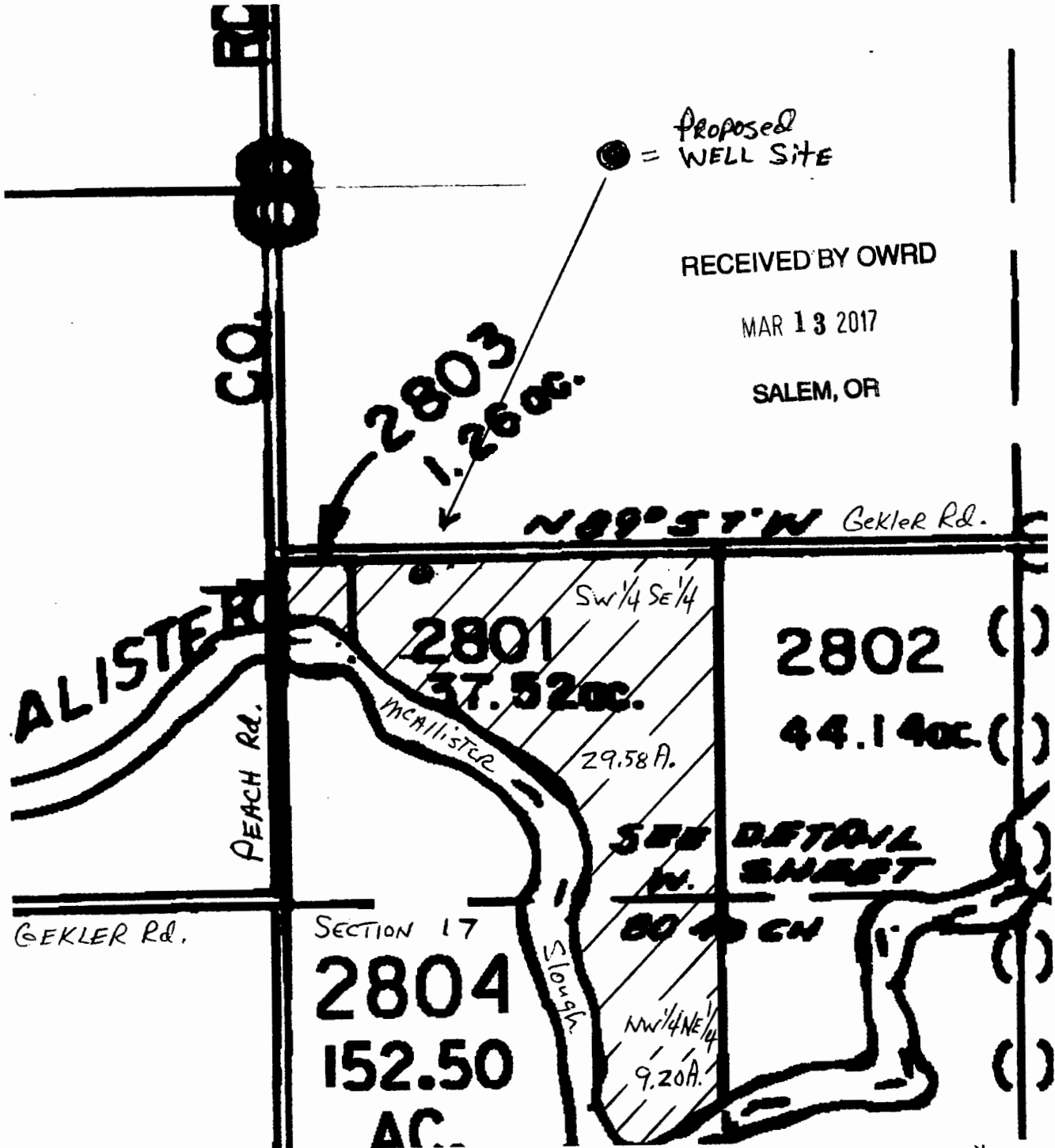
Map Date: 3/6/2017
Coordinate System: NAD 1983 StatePlane Oregon North FIPS 3601 Feet
Drawn By: Will Anderson | will@anderson-geographics.com
Data: Anderson Geographics, Threemile Canyon Farms



WORK COPY

PROPOSED WELL LOCATED
FROM CENTER SECTION 8
1400 FEET SOUTH
500 FEET EAST

TOTAL ACRES
38.78 A.



SW 1/2, SE 1/4, SEC. 8, Township 3S, Range 39 East
APP NO. G 16252

T 12607