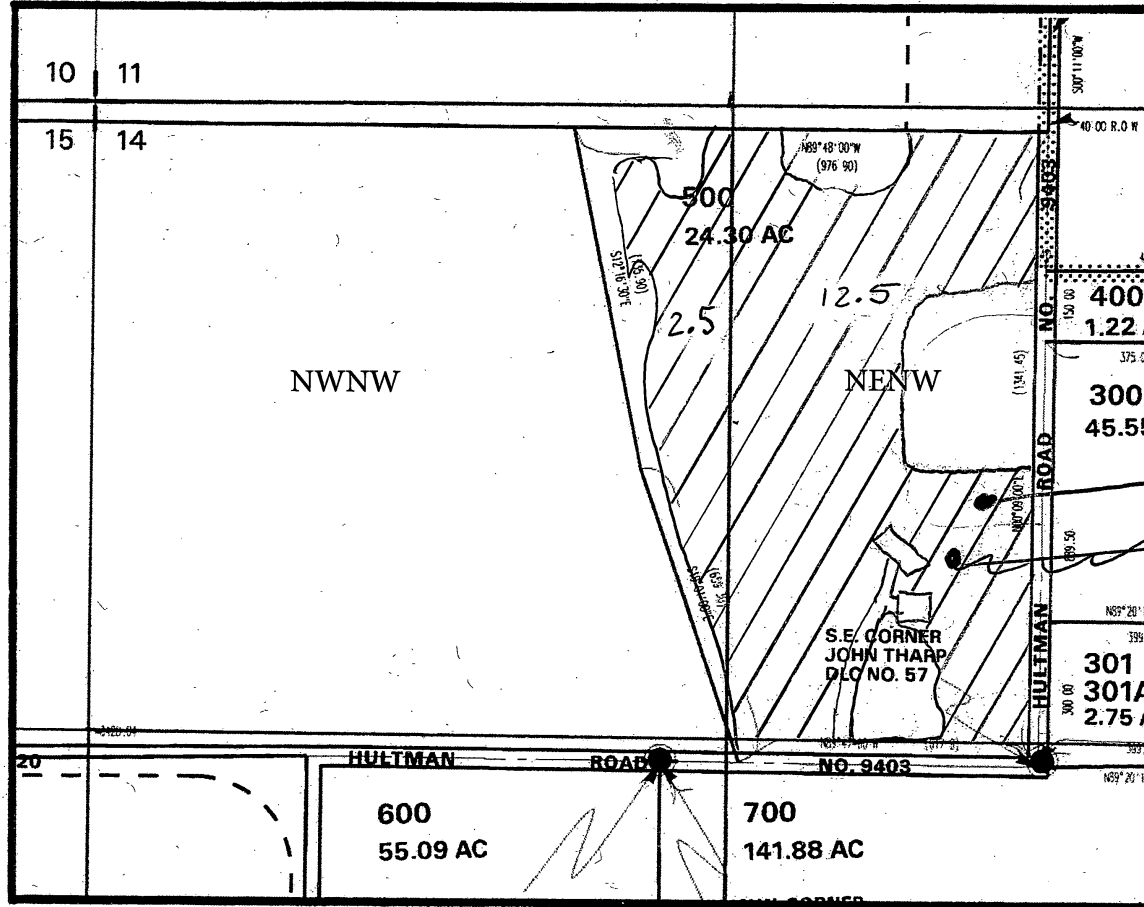


G-18108

T 9 S, R 4 W, Section 14
Tax Lot 500



1" = 400'

#1
potential well site
#2
potential well site
#1

TA

#1 471.9 North 454.7
Well Located approximately ~~960~~ feet South and ~~1800~~ feet East
from the ~~NW~~ corner of section 14.
SE Re NW NW corner

RECEIVED

JUN 02 2016

WATER RESOURCES DEPT
SALEM, OREGON



Oregon Water Resources Department
Water Rights Mapping Tool

- Main
- Help
- Return
- Contact Us

725 Summer St NE, Sal

Search

Identify Non-Water Right Features

Tax Lots

Tools

Additional Measure Tools:

Buffer: Feet

Start Point: Clear All:

Measure Distance (ft):

N S

E W

Bearing and Distance:
Degrees Minutes Seconds

N S E W

(0 90) (0 60) (0 60)

Distance (ft):

Messages:

< >

Layers

Print



POD POU

Thermaine Ashley 9/15/17

RECEIVED

SEP 15 2017

OWRD