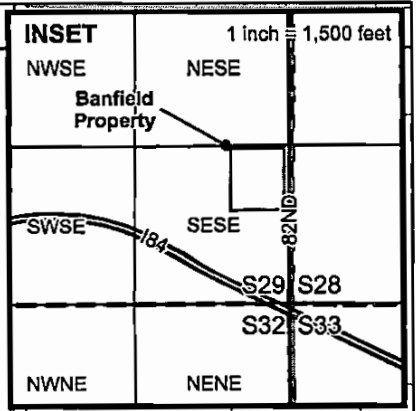
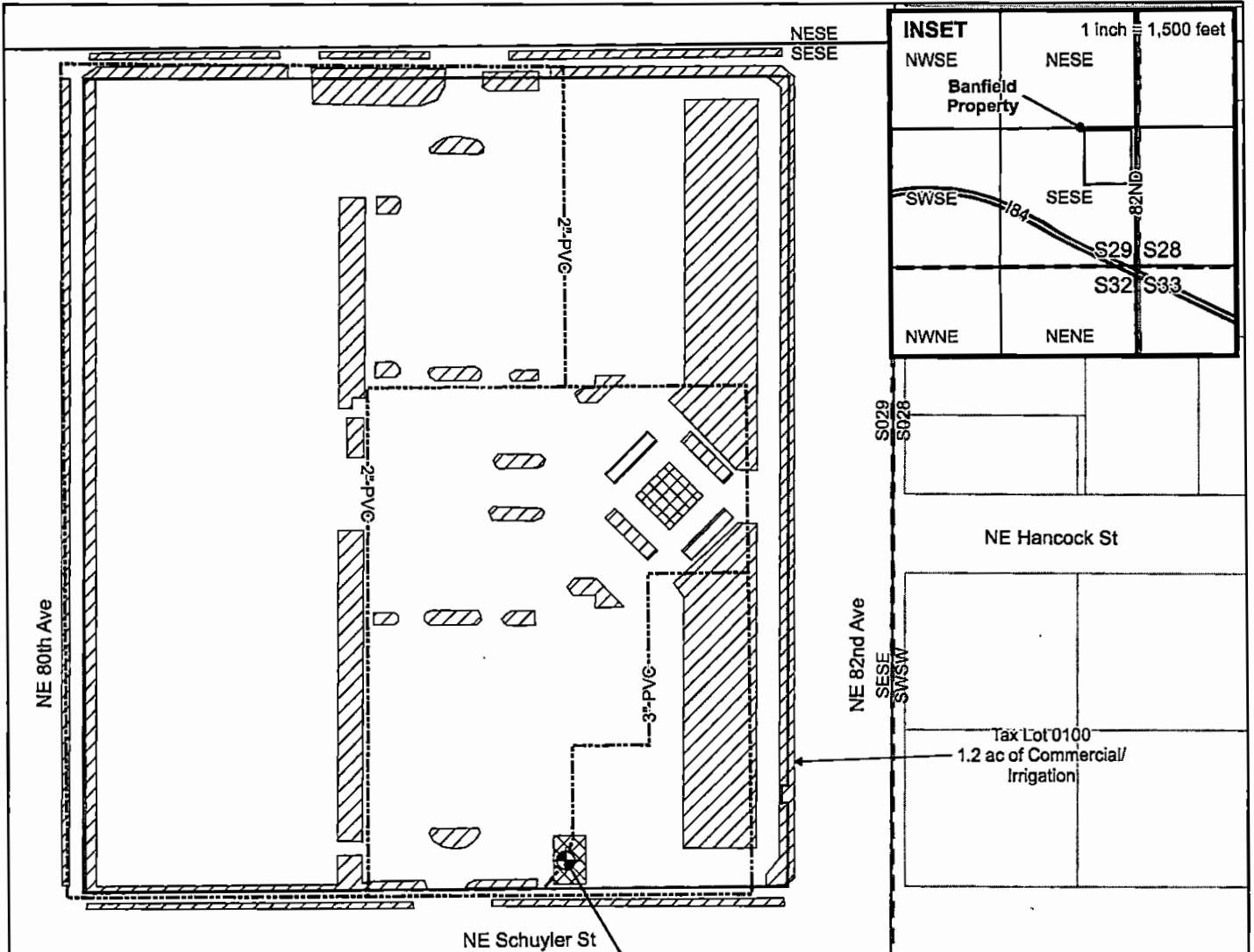


Application for Groundwater Water Right

SE1/4, SE 1/4, Section 29
 Township 1N, Range 2E, W.M.
 Commercial/Irrigation Use: 1.2 Acres



Legend

- Wells
- Irrigation mainlines
- Place of Use**
- Irrigation
- Commercial
- Section
- Quarter/quarter
- Tax lots

Well 1 - MULT 78361
 1280 ft N & 130 ft W from
 the SE corner of S29

RECEIVED BY OWRD

AUG 24 2017

SALEM, OR

Certified Water Rights Examiner
 #1101

Robert E. Long Jr.

Robert E. Long Jr.
 May 15, 2002
STATE OF OREGON

EXPIRATION DATE **12-31-2017**

C:\001 CwM Projects\1623001 Banfield\gis\003 figures

CWM-H2O

Complete Water Management

1319 MLK Jr Blvd, Suite 204
 Portland, Oregon 97214
 (503) 893-5937

This map is not intended to provide legal dimensions or property ownership lines. The scale of this map, 1 in = 100 ft, is the same scale as the Assessor's Map, 1N 2E 29DD

1	12/15/16	RMS	Draft
2	08/23/17	RMS	Final
No.	Date	By	Revisions

N

50 0 50 100 ft

1 inch = 100 ft

Proj#: 1608001
 Banfield Pet Hospital
 Glenhaven LLC
 8000 NE Tillamook Street
 Portland, OR 97213