

SECTION 17 T.10S. R.3W. W
Linn County

Well #2 1" = 800'

10S03
MILLER!

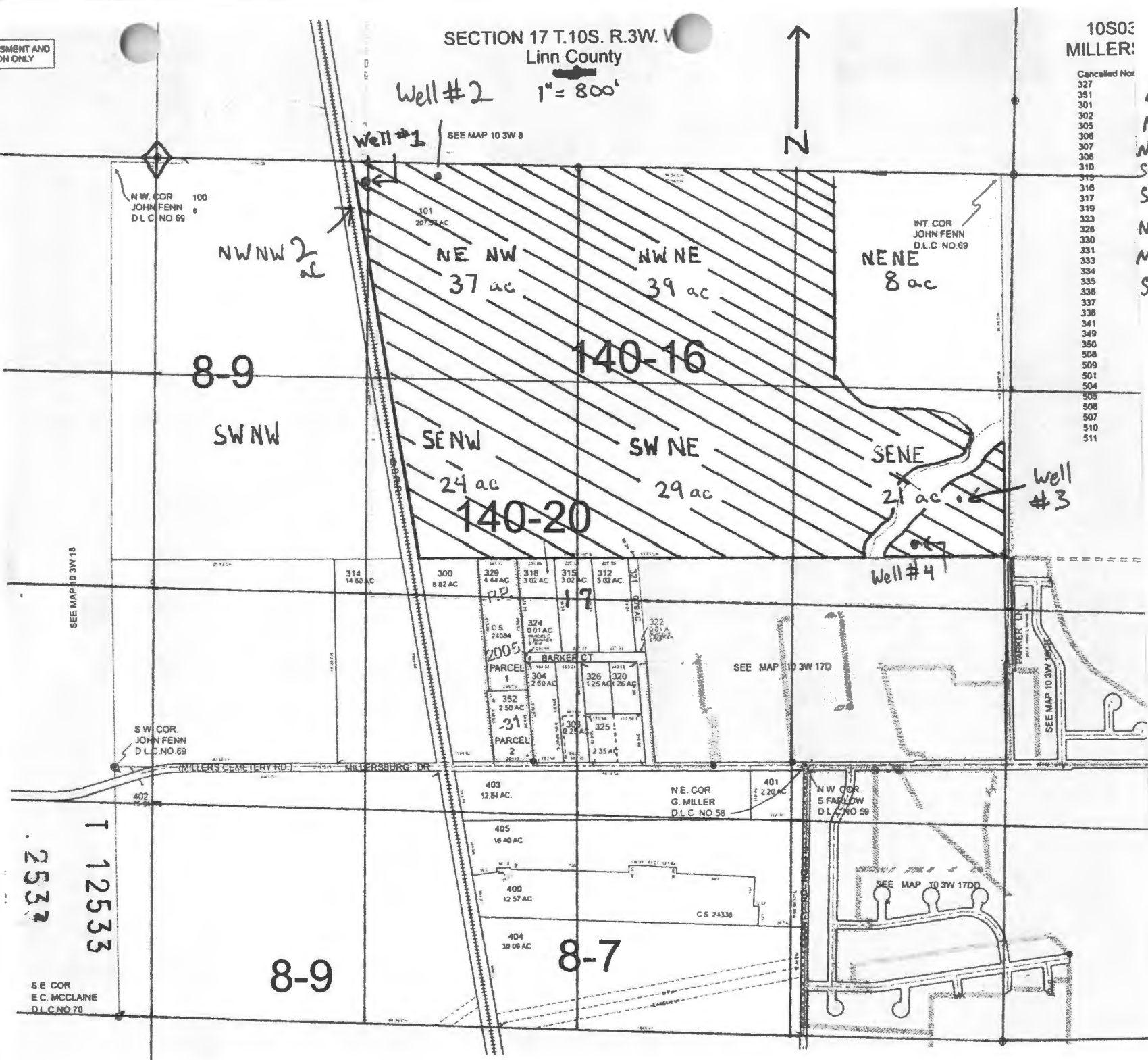
- Cancelled Nos
- 327
 - 351
 - 301
 - 302
 - 305
 - 306
 - 307
 - 308
 - 310
 - 313
 - 316
 - 317
 - 319
 - 323
 - 328
 - 330
 - 331
 - 333
 - 334
 - 335
 - 336
 - 337
 - 338
 - 341
 - 349
 - 350
 - 508
 - 509
 - 501
 - 504
 - 505
 - 508
 - 507
 - 510
 - 511

Acres
NE 1/4 NE 1/4 = 8
NW 1/4 NE 1/4 = 39
SW 1/4 NE 1/4 = 29
SE 1/4 NE 1/4 = 21
NE 1/4 NE 1/4 = 37
NW 1/4 NW 1/4 = 2
SE 1/4 NW 1/4 = 24

Well #1 135' South @ 1240' East
Well #2 100' South @ 1340' East
Well #3 200' South @ 270' West
Well #4 2360' South @ 430' West

from NW corner Section 17
from NW corner Section 17
from NE corner Section 17
from NE corner Section 17

RECEIVED BY OWRD
DEC 12 2016
SALEM, OR



MENT AND
ON ONLY

NW COR
JOHN FENN
D.L.C. NO. 69

INT. COR
JOHN FENN
D.L.C. NO. 69

SW COR.
JOHN FENN
D.L.C. NO. 69

N.E. COR
G. MILLER
D.L.C. NO. 58

NW COR.
S. FARLOW
D.L.C. NO. 59

T 12533
2533

SE COR
E.C. McCLAIN
D.L.C. NO. 70