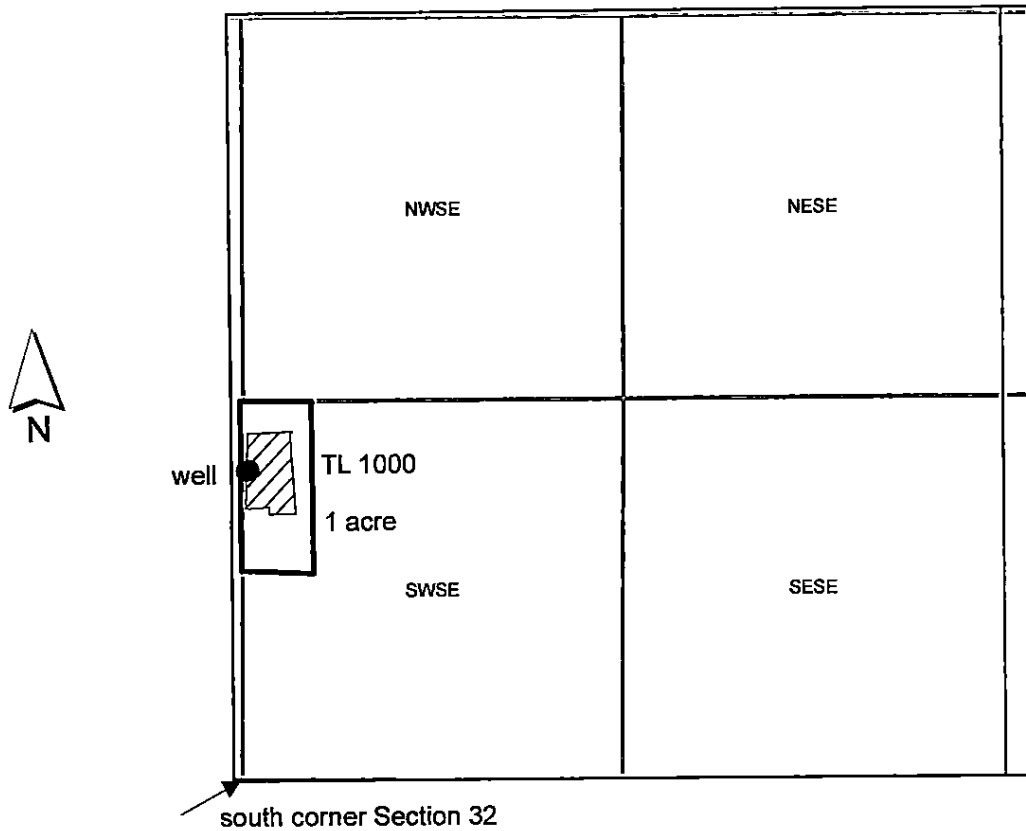


T39S R7W Southeast Quarter Section 32



1 inch = 660 feet

The well will be located approximately 1100 ft north of the south corner of Section 32, according to the landowner.

RECEIVED BY OWRD

FEB 02 2017

SALEM, OR

RECEIVED BY OWRD

JAN 19 2017

SALEM, OR

G-18449