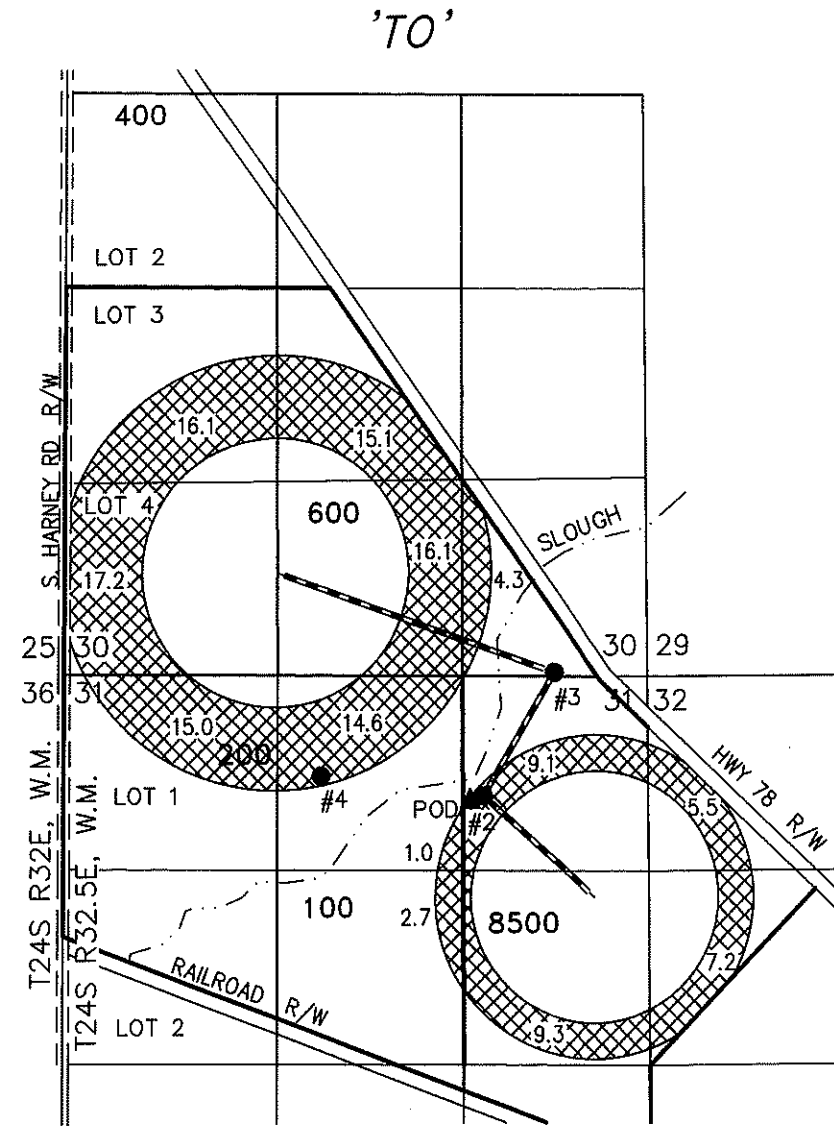
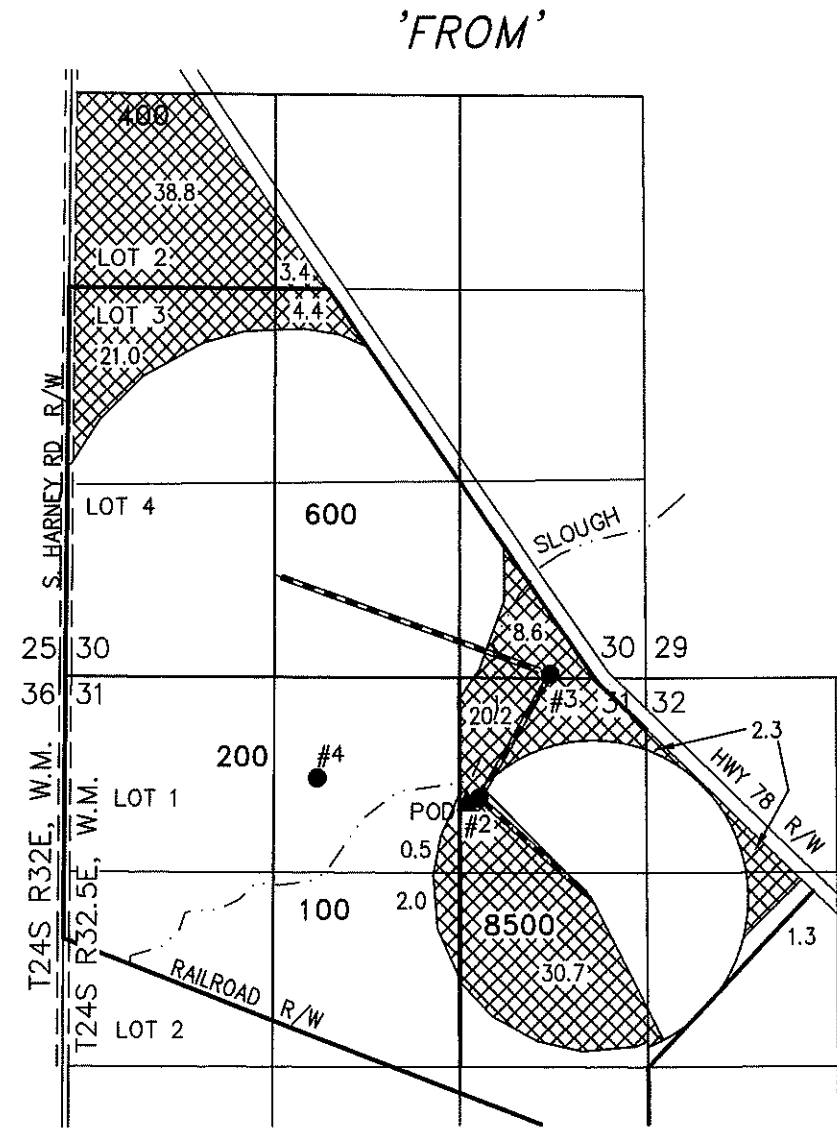


# MAP TO ACCOMPANY APPLICATION TO CHANGE PLACE OF USE FOR BLACKBURN RANCHES, LLC

TAX LOTS 400 & 600 IN SECTION 30,  
TAX LOTS 100 & 200 IN SECTION 31,  
TAX LOT 8500 IN SECTION 32,  
TOWNSHIP 24 SOUTH, RANGE 32.5 EAST, W.M.  
HARNEY COUNTY, OREGON



- WELL 4 (HARN 51548)**  
 ● LOCATED IN THE NW 1/4 NE 1/4 SECTION 31, T24S R32.5E, W.M. AND 685 FEET SOUTH AND 2275 FEET WEST FROM THE NE CORNER OF SECTION 31.
- WELL 3 (HARN 51322)**  
 ● LOCATED IN THE SE 1/4 SE 1/4 SECTION 30, T24S R32.5E, W.M. AND 27 FEET NORTH AND 655 FEET WEST FROM THE SE CORNER OF SECTION 30.
- WELL 2 (HARN 967/1725)**  
 ● LOCATED IN THE NE 1/4 NE 1/4 SECTION 31, T24S R32.5E, W.M. AND 811 FEET SOUTH AND 1151 FEET WEST FROM THE NE CORNER OF SECTION 31.

133.2 ACRES 'IR' RIGHTS FROM WELLS 2, 3 & 4 PER PERMIT G-16337, PICKED UP, AS SHOWN.

THIS MAP IS FOR THE PURPOSE OF LOCATING A WATER RIGHT ONLY AND HAS NO INTENT TO PROVIDE LEGAL DIMENSIONS OR THE LOCATION OF PROPERTY LINES.

PROJECT No. 17-027

PREPARED AT THE REQUEST OF:  
 BLACKBURN RANCHES, LLC  
 707 PONDEROSA VILLAGE  
 BURNS, OR 97720



**ALL POINTS ENGINEERING  
& SURVEYING, INC.**

P.O. BOX 767  
 TERREBONNE, OREGON 97760  
 (541) 548-5833 PH  
 Scott@APEandS.com  
 www.APEandS.com

RECEIVED

MAR 07 2018

OWRD