


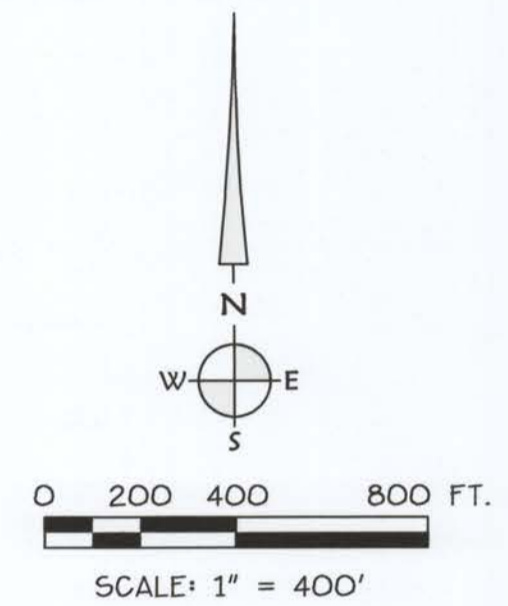
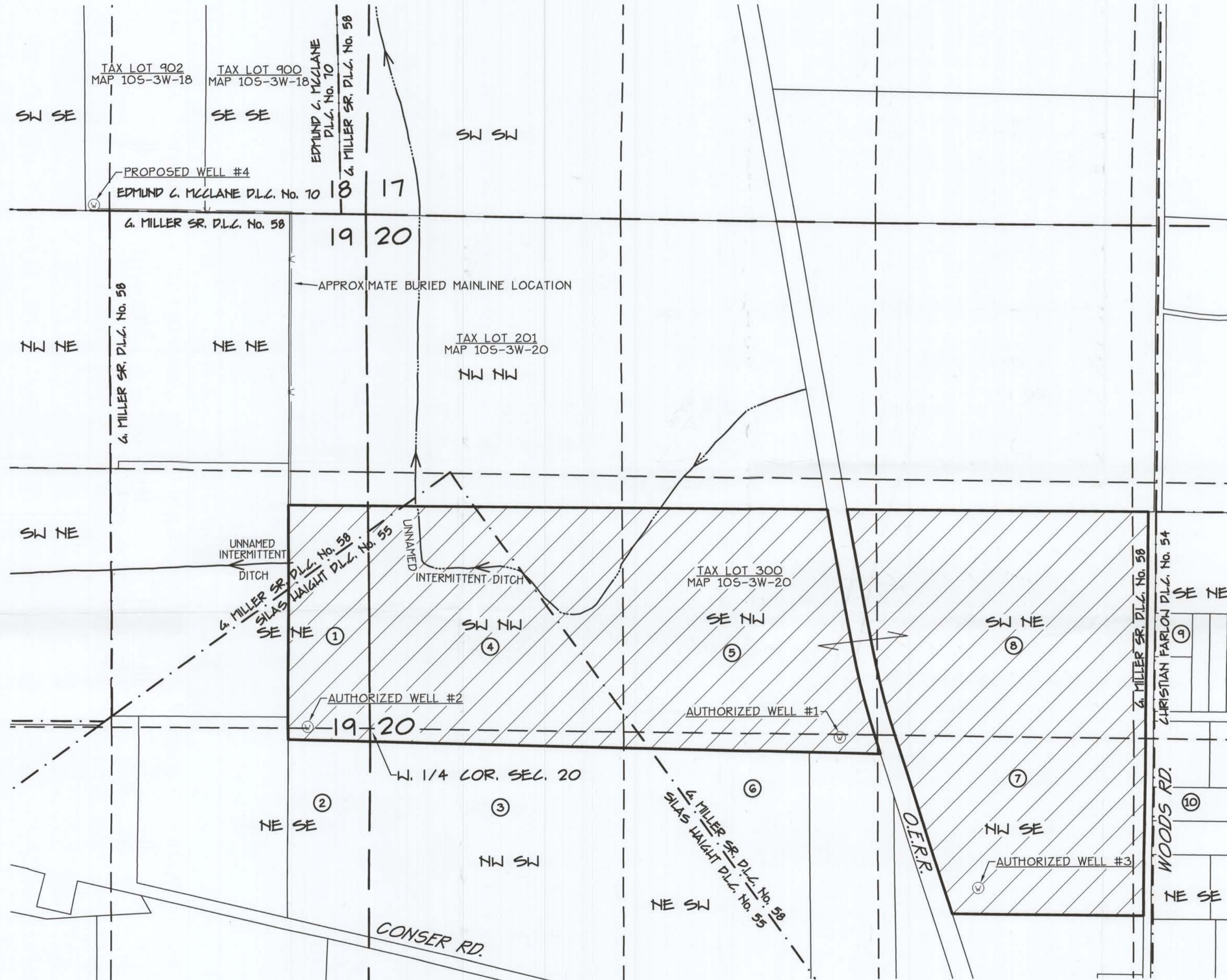
APPLICATION FOR NEW WATER RIGHTS MAP
 LOCATED IN
 SILAS HAIGHT D.L.C. No. 55
 G. MILLER SR. D.L.C. No. 58
 IN
 SEC. 19 + 20, T. 10 S., R. 3 W., W.M.
 LINN COUNTY, OREGON
 OCTOBER 29, 2018

LEGEND

-  AREA TO BE IRRIGATED, 144.4 ACRES TOTAL
- ① AREA REFERENCE, SEE "AREA REFERENCE TABLE"
- Ⓢ PROPOSED WELL LOCATION

GOVERNMENT TIES

- AUTHORIZED WELL #1 (ABANDONED) 40' SOUTH + 2420' EAST OF W. 1/4 COR. SEC. 20
- AUTHORIZED WELL #2 (ABANDONED) 10' NORTH + 320' WEST OF W. 1/4 COR. SEC. 20
- AUTHORIZED WELL #3 (ABANDONED) 820' SOUTH + 3130' EAST OF W. 1/4 COR. SEC. 20
- PROPOSED WELL #4 50' NORTH + 1400' WEST OF NW COR. SEC. 20



AREA REFERENCE TABLE

①	SE 1/4 NE 1/4 SEC. 19 D.L.C. 55: 8.3 ACRES D.L.C. 58: 2.7 ACRES TOTAL: 11.0 ACRES
②	NE 1/4 SE 1/4 SEC. 19 D.L.C. 55: 0.7 ACRES TOTAL: 0.7 ACRES
③	NW 1/4 SW 1/4 SEC. 20 D.L.C. 55: 2.3 ACRES TOTAL: 2.3 ACRES
④	SW 1/4 NW 1/4 SEC. 20 D.L.C. 55: 25.1 ACRES D.L.C. 58: 9.5 ACRES TOTAL: 34.6 ACRES
⑤	SE 1/4 NW 1/4 SEC. 20 D.L.C. 55: 0.1 ACRES D.L.C. 58: 32.3 ACRES TOTAL: 32.4 ACRES
⑥	NE 1/4 SW 1/4 SEC. 20 D.L.C. 55: 0.2 ACRES D.L.C. 58: 2.5 ACRES TOTAL: 2.7 ACRES
⑦	NW 1/4 SE 1/4 SEC. 20 D.L.C. 58: 22.6 ACRES TOTAL: 22.6 ACRES
⑧	SW 1/4 NE 1/4 SEC. 20 D.L.C. 58: 35.0 ACRES TOTAL: 35.0 ACRES
⑨	SE 1/4 NE 1/4 SEC. 20 D.L.C. 58: 1.9 ACRES TOTAL: 1.9 ACRES
⑩	NE 1/4 SE 1/4 SEC. 20 D.L.C. 58: 1.2 ACRES TOTAL: 1.2 ACRES


NOTES:

- 1) GIS DATA FROM LINN COUNTY DATABASE, BASIS OF BEARINGS IS NORTH FOR THE WEST SECTION LINE OF SECTION 20.
- 2) THIS MAP IS NOT INTENDED TO PROVIDE LEGAL DIMENSIONS OR LOCATIONS OF PROPERTY OWNERSHIP LINES.

APPLICATION FOR NEW WATER RIGHTS MAP
 LOCATED IN
 SILAS HAIGHT D.L.C. No. 55
 G. MILLER SR. D.L.C. No. 58
 IN
 SEC. 19 + 20, T. 10 S., R. 3 W., W.M.
 LINN COUNTY, OREGON
 OCTOBER 29, 2018

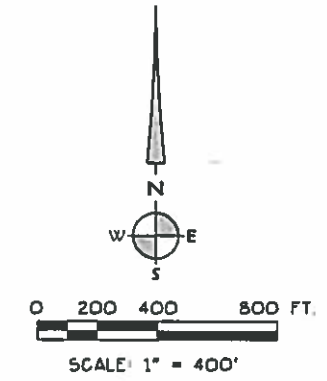
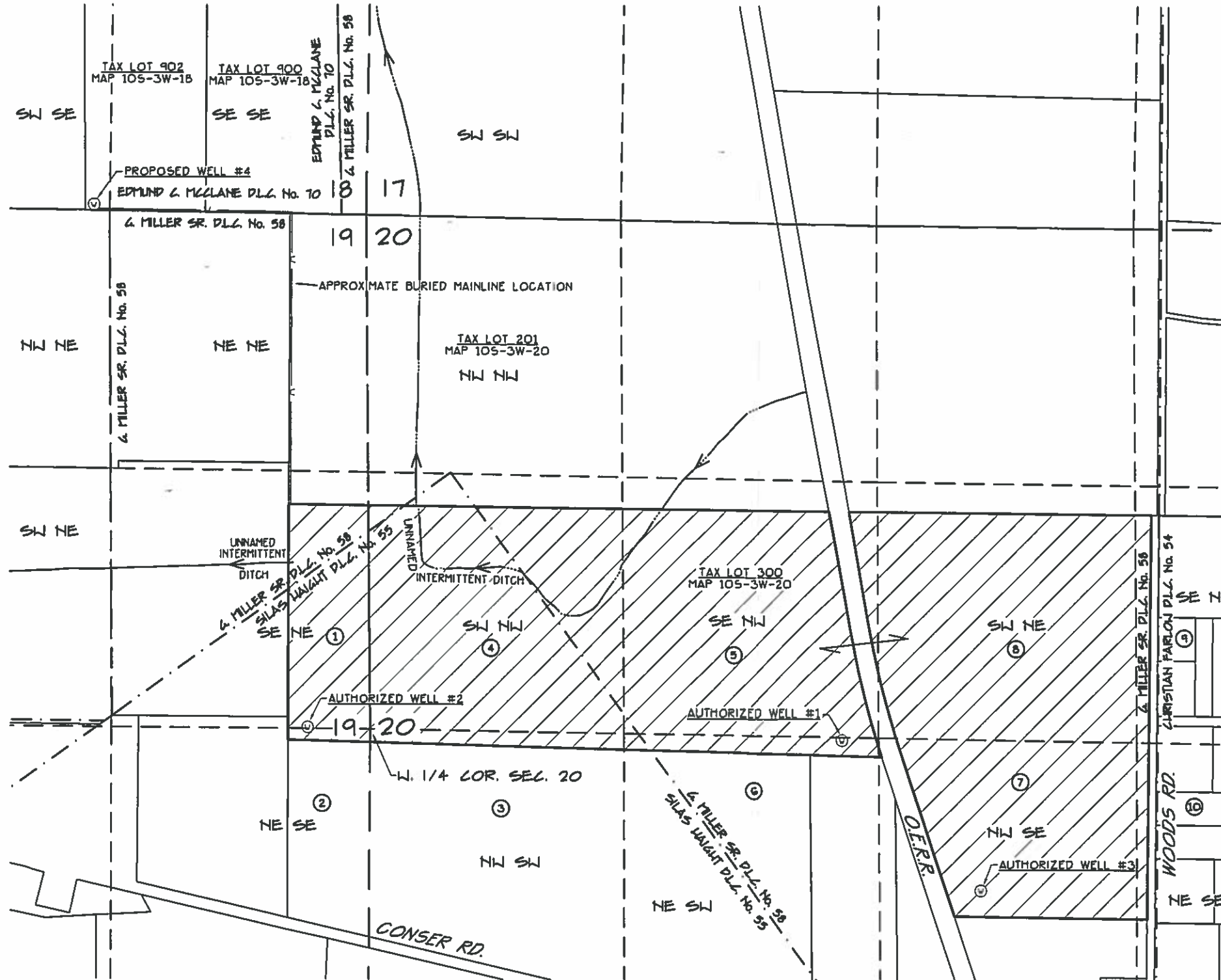
REDUCED SIZE COPY

LEGEND

-  AREA TO BE IRRIGATED, 144.4 ACRES TOTAL
- ① AREA REFERENCE, SEE "AREA REFERENCE TABLE"
- Ⓧ PROPOSED WELL LOCATION

GOVERNMENT TIES

- AUTHORIZED WELL #1 (ABANDONED) 40' SOUTH + 2420' EAST OF W. 1/4 COR. SEC. 20
- AUTHORIZED WELL #2 (ABANDONED) 10' NORTH + 320' WEST OF W. 1/4 COR. SEC. 20
- AUTHORIZED WELL #3 (ABANDONED) 820' SOUTH + 3130' EAST OF W. 1/4 COR. SEC. 20
- PROPOSED WELL #4 50' NORTH + 1400' WEST OF NW COR. SEC. 20



AREA REFERENCE TABLE

①	SE 1/4 NE 1/4 SEC. 19 D.L.C. 55: 8.3 ACRES D.L.C. 58: 2.7 ACRES TOTAL: 11.0 ACRES
②	NE 1/4 SE 1/4 SEC. 19 D.L.C. 55: 0.7 ACRES TOTAL: 0.7 ACRES
③	NW 1/4 SW 1/4 SEC. 20 D.L.C. 55: 2.3 ACRES TOTAL: 2.3 ACRES
④	SW 1/4 NW 1/4 SEC. 20 D.L.C. 55: 25.1 ACRES D.L.C. 58: 9.5 ACRES TOTAL: 34.6 ACRES
⑤	SE 1/4 NW 1/4 SEC. 20 D.L.C. 55: 0.1 ACRES D.L.C. 58: 32.3 ACRES TOTAL: 32.4 ACRES
⑥	NE 1/4 SW 1/4 SEC. 20 D.L.C. 55: 0.2 ACRES D.L.C. 58: 2.5 ACRES TOTAL: 2.7 ACRES
⑦	NW 1/4 SE 1/4 SEC. 20 D.L.C. 58: 22.6 ACRES TOTAL: 22.6 ACRES
⑧	SW 1/4 NE 1/4 SEC. 20 D.L.C. 58: 35.0 ACRES TOTAL: 35.0 ACRES
⑨	SE 1/4 NE 1/4 SEC. 20 D.L.C. 58: 1.9 ACRES TOTAL: 1.9 ACRES
⑩	NE 1/4 SE 1/4 SEC. 20 D.L.C. 58: 12 ACRES TOTAL: 12 ACRES

NOTES:

- 1) GIS DATA FROM LINN COUNTY DATABASE, BASIS OF BEARINGS IS NORTH FOR THE WEST SECTION LINE OF SECTION 20.
- 2) THIS MAP IS NOT INTENDED TO PROVIDE LEGAL DIMENSIONS OR LOCATIONS OF PROPERTY OWNERSHIP LINES.