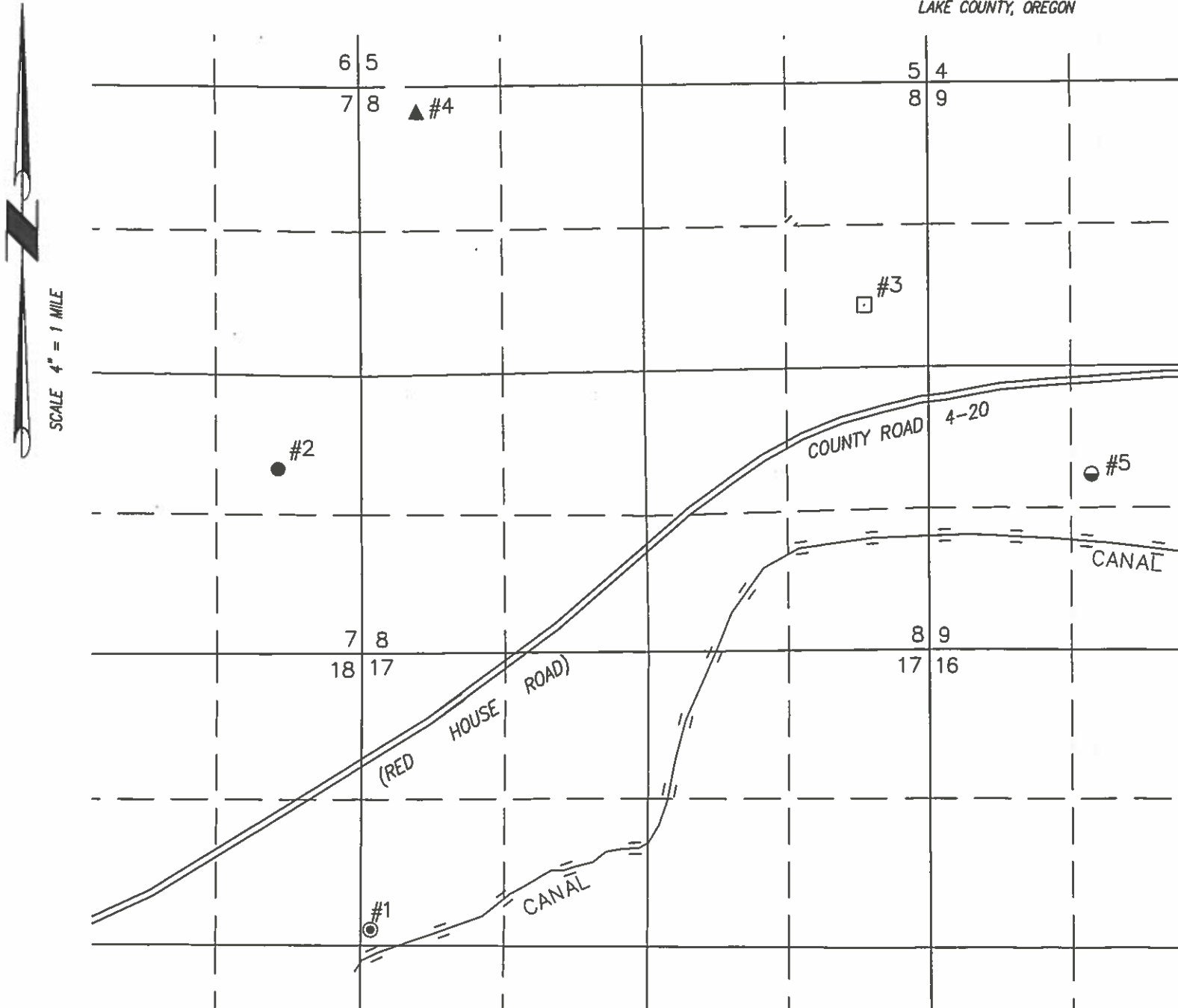


MAP TO ACCOMPANY APPLICATION TO ADD POINTS
OF APPROPRIATION TO PERMIT APPLICATION G-15996
FOR
JRS PROPERTIES III

TAX LOT 500 IN
SECTIONS 7, 8, & 17, TOWNSHIP 33 SOUTH, RANGE 19 EAST, W.M.
LAKE COUNTY, OREGON



LAKE 51588 AUTHORIZED

- WELL #5 LOCATED IN THE NE 1/4 SW 1/4 SECTION 9 AND 1615 FEET NORTH AND 1512 FEET EAST FROM THE SW CORNER.

LAKE 4564 PROPOSED

- ⊙ WELL #1 LOCATED IN THE SW 1/4 NW 1/4 SECTION 17 AND 2600 FEET SOUTH AND 50 FEET EAST FROM THE NW CORNER.

LAKE 51182 PROPOSED

- WELL #2 LOCATED IN THE NE 1/4 SE 1/4 SECTION 7 AND 1690 FEET NORTH AND 770 FEET WEST FROM THE SE CORNER.

LAKE 50941 PROPOSED

- WELL #3 LOCATED IN THE SE 1/4 NE 1/4 SECTION 8 AND 2048 FEET SOUTH AND 563 FEET WEST FROM THE NE CORNER.

LAKE 51031 PROPOSED

- ▲ WELL #4 LOCATED IN THE NW 1/4 NW 1/4 SECTION 8 AND 325 FEET SOUTH AND 4704 FEET WEST FROM THE NE CORNER.

THIS MAP IS FOR THE PURPOSE OF LOCATING A WATER RIGHT ONLY AND HAS NO INTENT TO PROVIDE LEGAL DIMENSIONS OR THE LOCATION OF PROPERTY LINES.

RECEIVED BY OWRD

APR 05 2017

SALEM, OR

ALL POINTS ENGINEERING
& SURVEYING, INC.



P.O. BOX 767
TERREBONNE, OREGON 97760
(541) 548-5833 PH
Scott@APEandS.com
www.APEandS.com

PROJECT No. 17-028

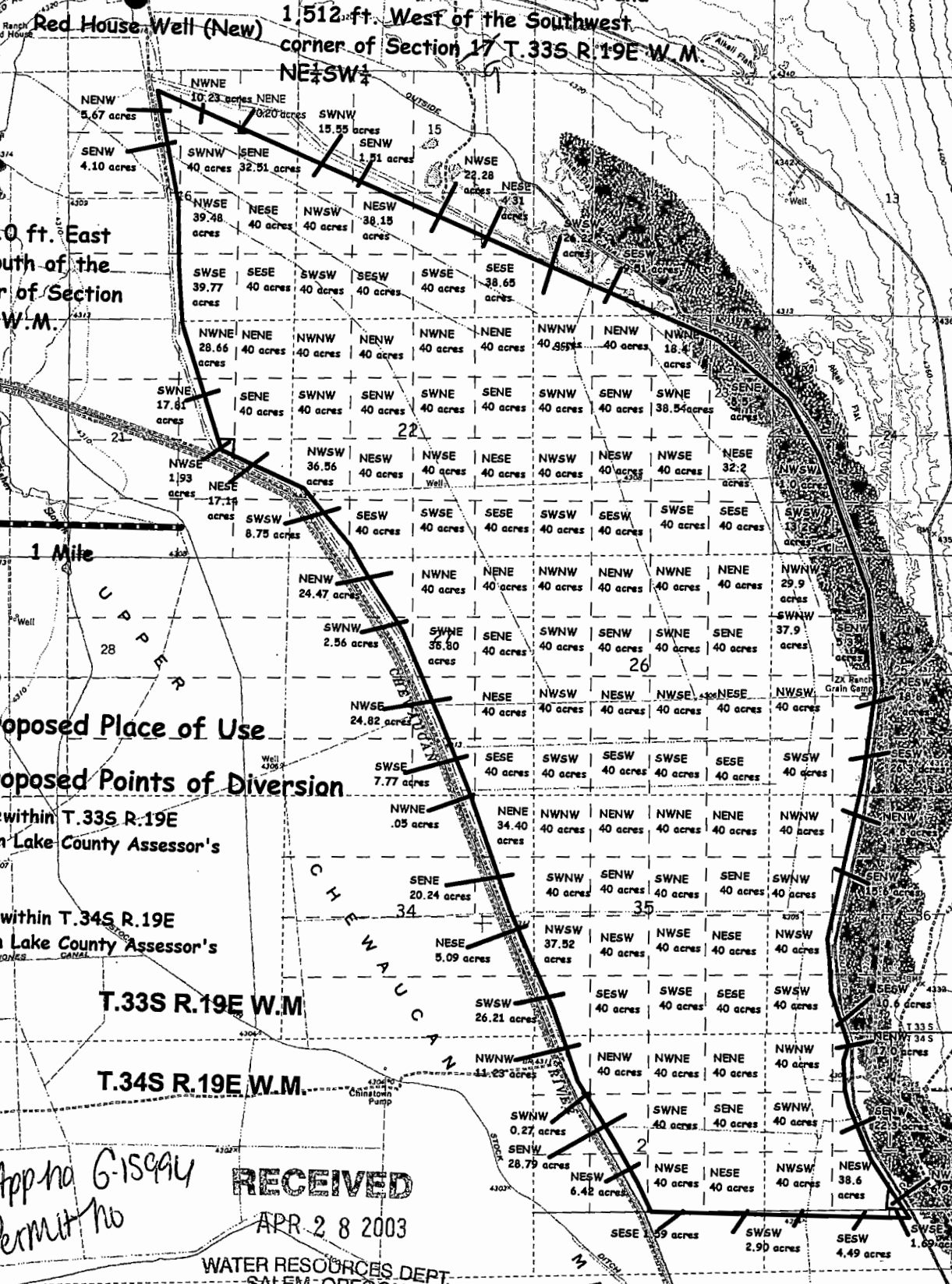
PREPARED AT THE REQUEST OF:

JRS PROPERTIES III
P.O. BOX 27
BOISE, ID 83707

Application for a Permit to Use Groundwater, Lake County, Oregon

Approximately 1,615 ft. North and 1,512 ft. West of the Southwest corner of Section 17 T.33S R.19E W.M. NE $\frac{1}{4}$ SW $\frac{1}{4}$

Well No. 1 (Existing)
 Approximately 110 ft. East and 2,350 ft. South of the Northwest Corner of Section 17 T.33S R.19E W.M. SW $\frac{1}{4}$ NW $\frac{1}{4}$



Scale: 1 Mile

North

= Proposed Place of Use
 = Proposed Points of Diversion

The Place of Use within T.33S R.19E is contained within Lake County Assessor's Tax Lot No. 500

The Place of Use within T.34S R.19E is contained within Lake County Assessor's Tax Lot No. 200

T.33S R.19E W.M.
 T.34S R.19E W.M.

App No G-1594
 Permit No

RECEIVED
 APR 28 2003

WATER RESOURCES DEPT.
 SALEM, OREGON

Scale:



acres SWSW 8.75 acres SE 40
 NENW 24.47 acres
 SWNW 2.56 acres

North



= Proposed Place of Use



= Proposed Points of Diversion

The Place of Use within T.33S R.19E
 is contained within Lake County Assessor's
 Tax Lot No. 500

The Place of Use within T.34S R.19E
 is contained within Lake County Assessor's
 Tax Lot No. 200

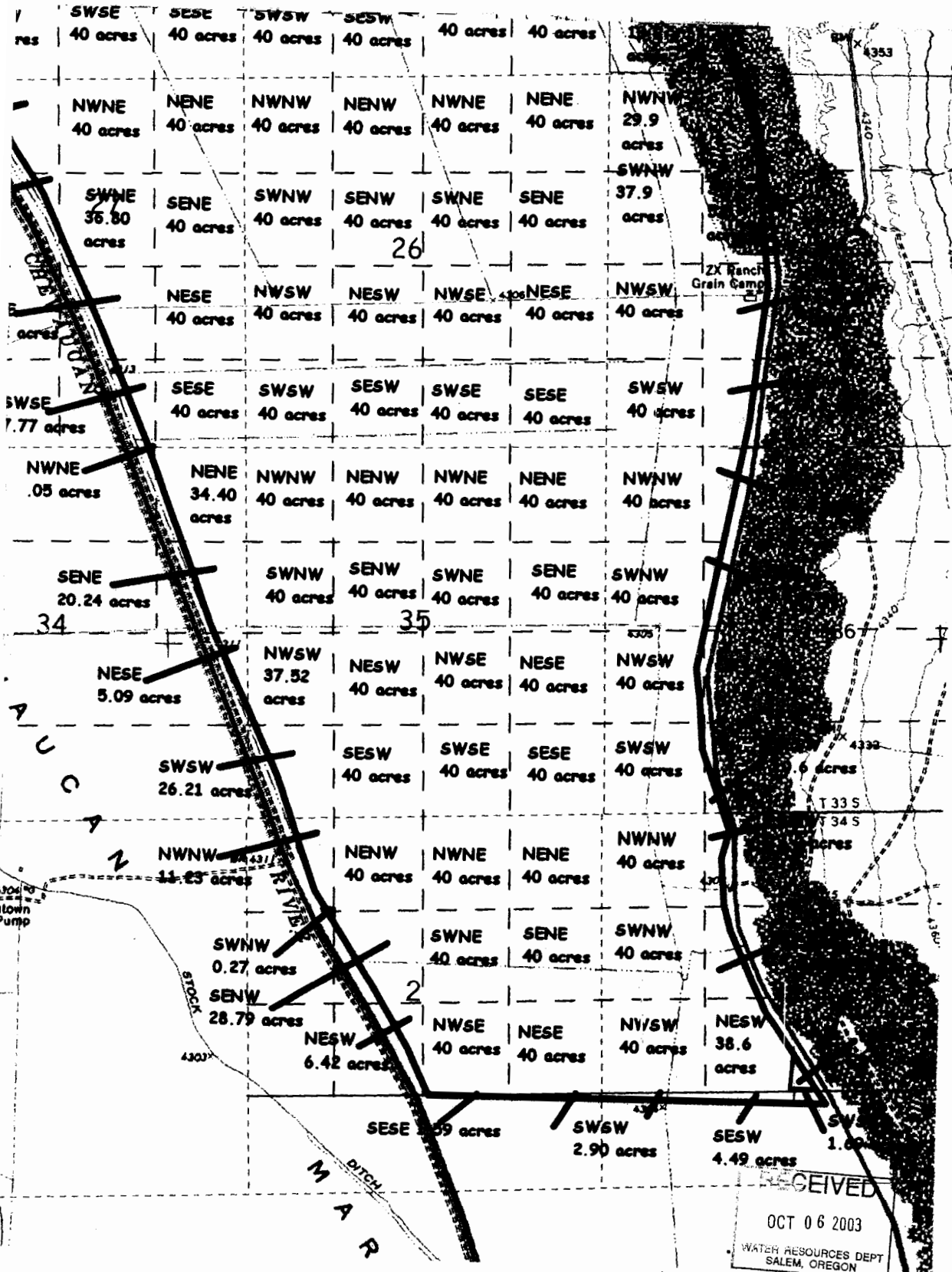
ER CHEWAUCAN MARSH

T.33S R.19E W.M

T.34S R.19E W.M

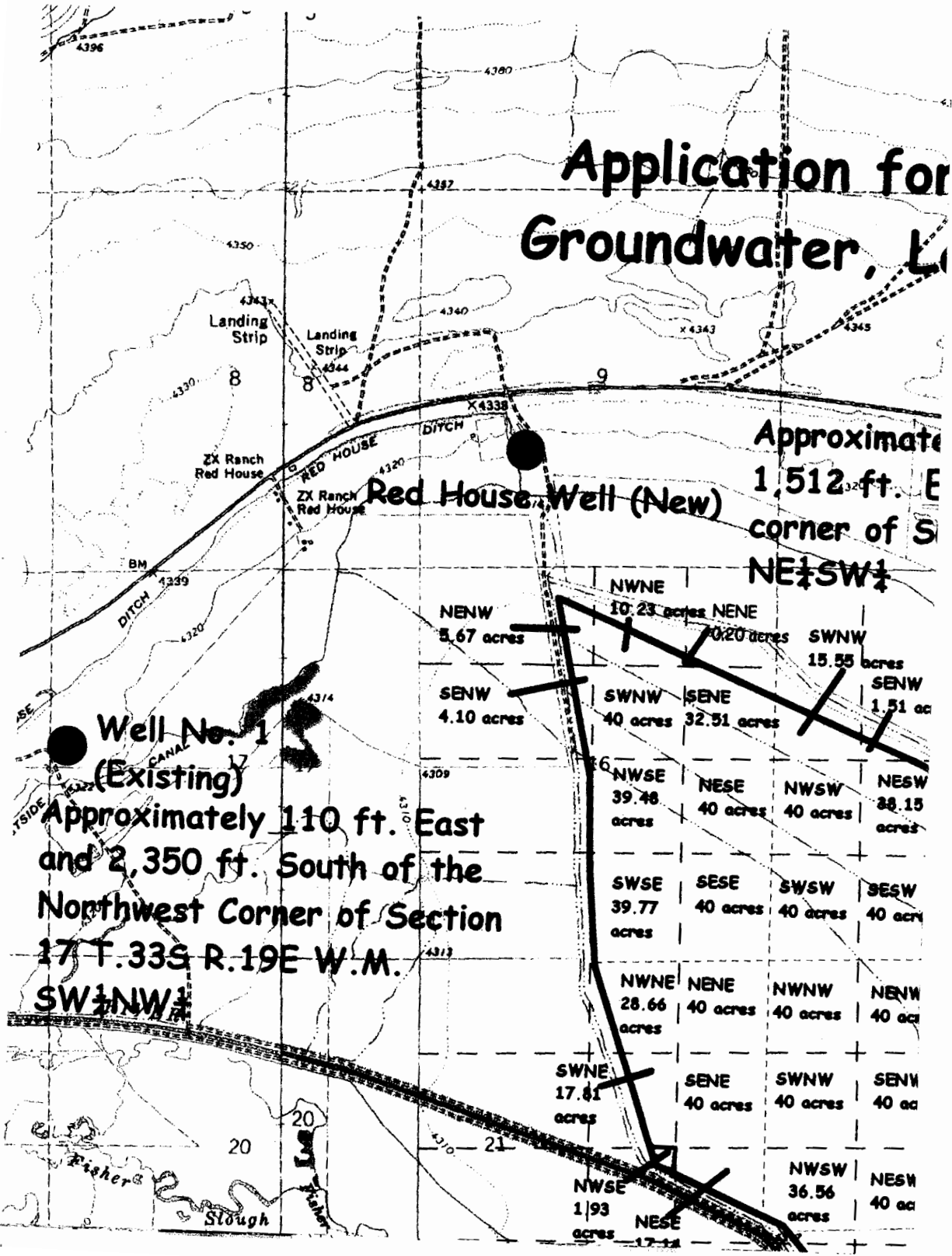
T 33 S
 T 34 S





RECEIVED
 OCT 06 2003
 WATER RESOURCES DEPT
 SALEM, OREGON

Application for Groundwater, L



Approximate
1,512 ft. E
corner of S
NE $\frac{1}{4}$ SW $\frac{1}{4}$

Red House Well (New)

**Well No. 1
(Existing)**

Approximately 110 ft. East
and 2,350 ft. South of the
Northwest Corner of Section
17 T.33S R.19E W.M.

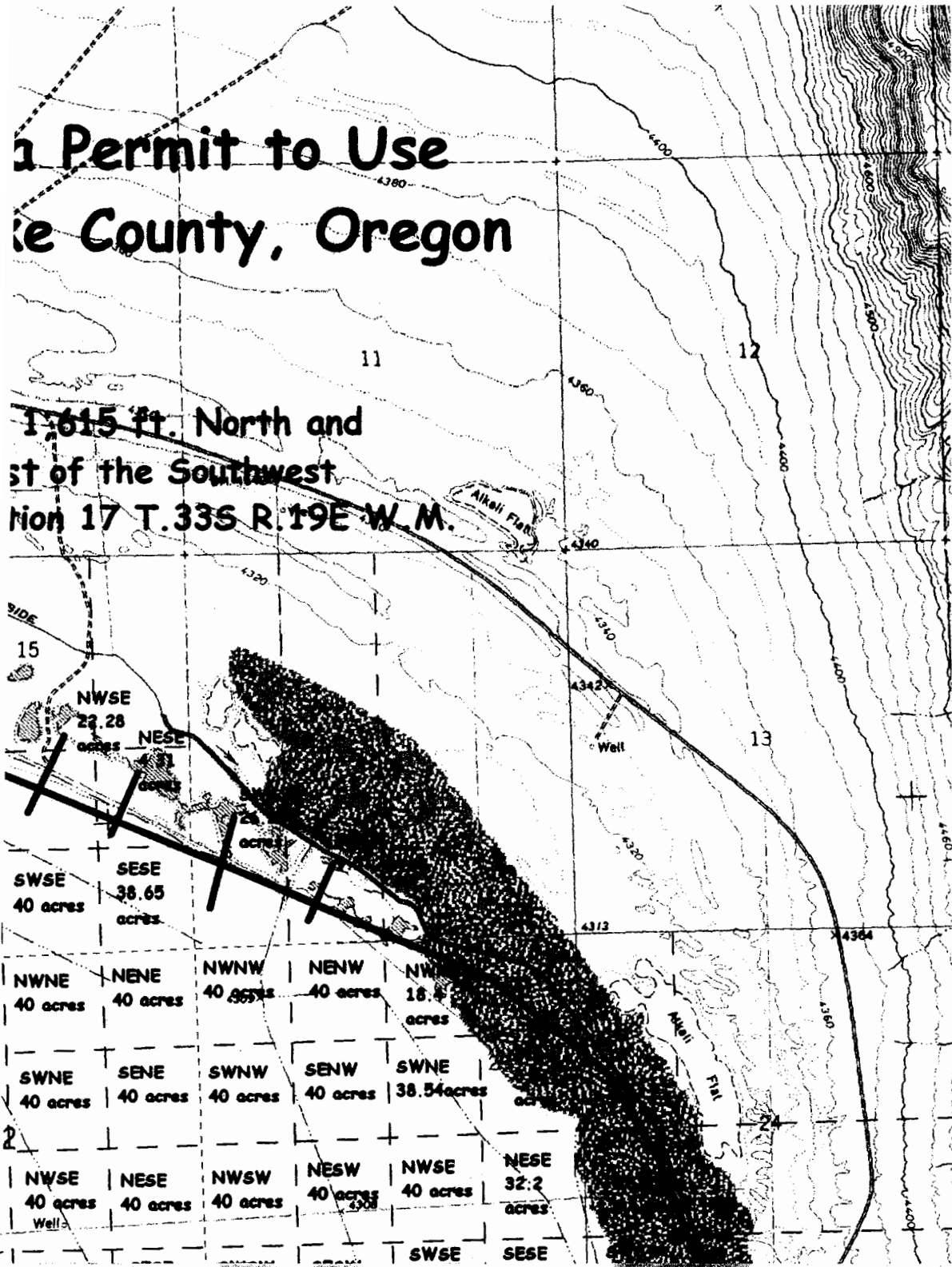
SW $\frac{1}{4}$ NW $\frac{1}{4}$

NENW 5.67 acres	NWNE 10.23 acres	NENE 10.20 acres	SWNW 15.55 acres
SESW 4.10 acres	SWNW 40 acres	SENE 32.51 acres	SESW 1.51 ac
NWSE 39.48 acres	NESE 40 acres	NWSW 40 acres	NESE 38.15 acres
SWSE 39.77 acres	SESE 40 acres	SWSW 40 acres	SESW 40 ac
NWNE 28.66 acres	NENE 40 acres	NWNW 40 acres	NENW 40 ac
SWNE 17.81 acres	SENE 40 acres	SWNW 40 acres	SESW 40 ac
NWSE 1.93 acres	NESE 17.14	NWSW 36.56 acres	NESE 40 ac

appno G-15996 Permit no B-15548

Permit to Use County, Oregon

1,615 ft. North and
West of the Southwest
Corner of Section 17 T.33S R.19E W.M.



NWSE 22.28 acres	NESE 11 acres				
SWSE 40 acres	SESE 38.65 acres				
NWNE 40 acres	NENE 40 acres	NWNW 40 acres	NENW 40 acres	NW 18.4 acres	
SWNE 40 acres	SENE 40 acres	SWNW 40 acres	SENW 40 acres	SWNE 38.54 acres	
NWSE 40 acres	NESE 40 acres	NWSW 40 acres	NESW 40 acres	NWSE 40 acres	NESE 32.2 acres
				SWSE	SESE