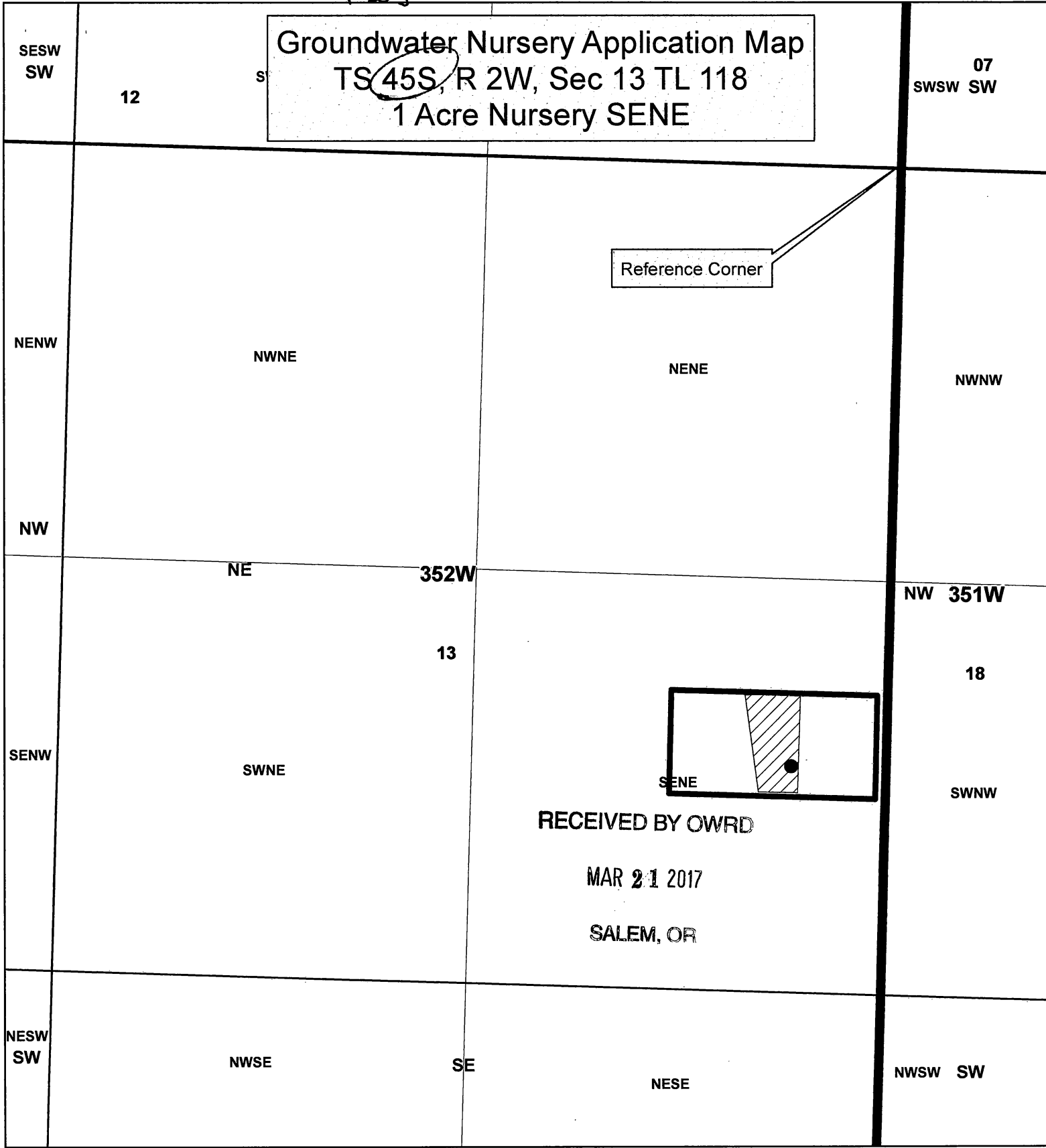
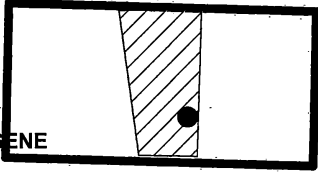


T-35P



Groundwater Nursery Application Map
 TS 45S, R 2W, Sec 13 TL 118
 1 Acre Nursery SENE

Reference Corner



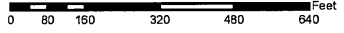
RECEIVED BY OWRD

MAR 21 2017

SALEM, OR

Legend

- L-47796 Well L-47796 is 310 ft W and 1925 ft S from NE Corner of Section 13
- ▨ POU Nursery
- ▭ TL 118



JACKSON COUNTY
WATERMASTER

Shavon Haynes

This map is based on a digital database compiled by Jackson County from a variety of sources. Jackson County cannot accept responsibility for errors, omissions, or positional accuracy. There are no warranties, expressed or implied.

Date: 03/01/2017: 40-1W-14 TL 1901.mxd; haynes

G-18483