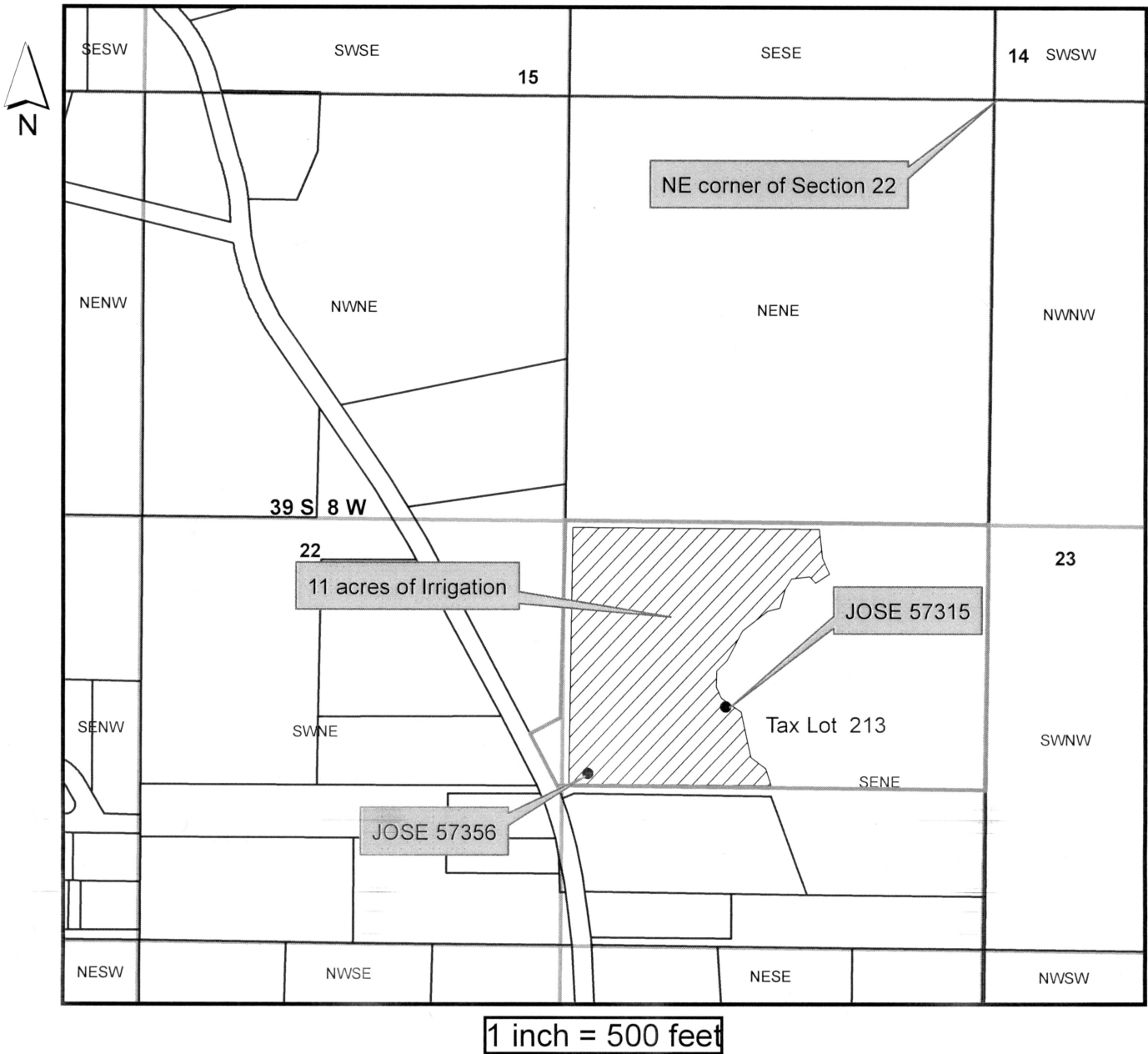


1679 Laurel Rd - GW Application Map



Water supply well JOSE 57315 is located 1850 feet South and 890 feet West from the Northeast corner of Section 22

Water supply well JOSE 57356 is located 2050 feet South and 1300 feet West from the Northeast corner of Section 22

Legend	
	Quarter quarters
	Townships
	Josephine County Tax Lots

RECEIVED

APR 22 2019

OWRD