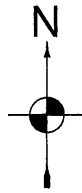
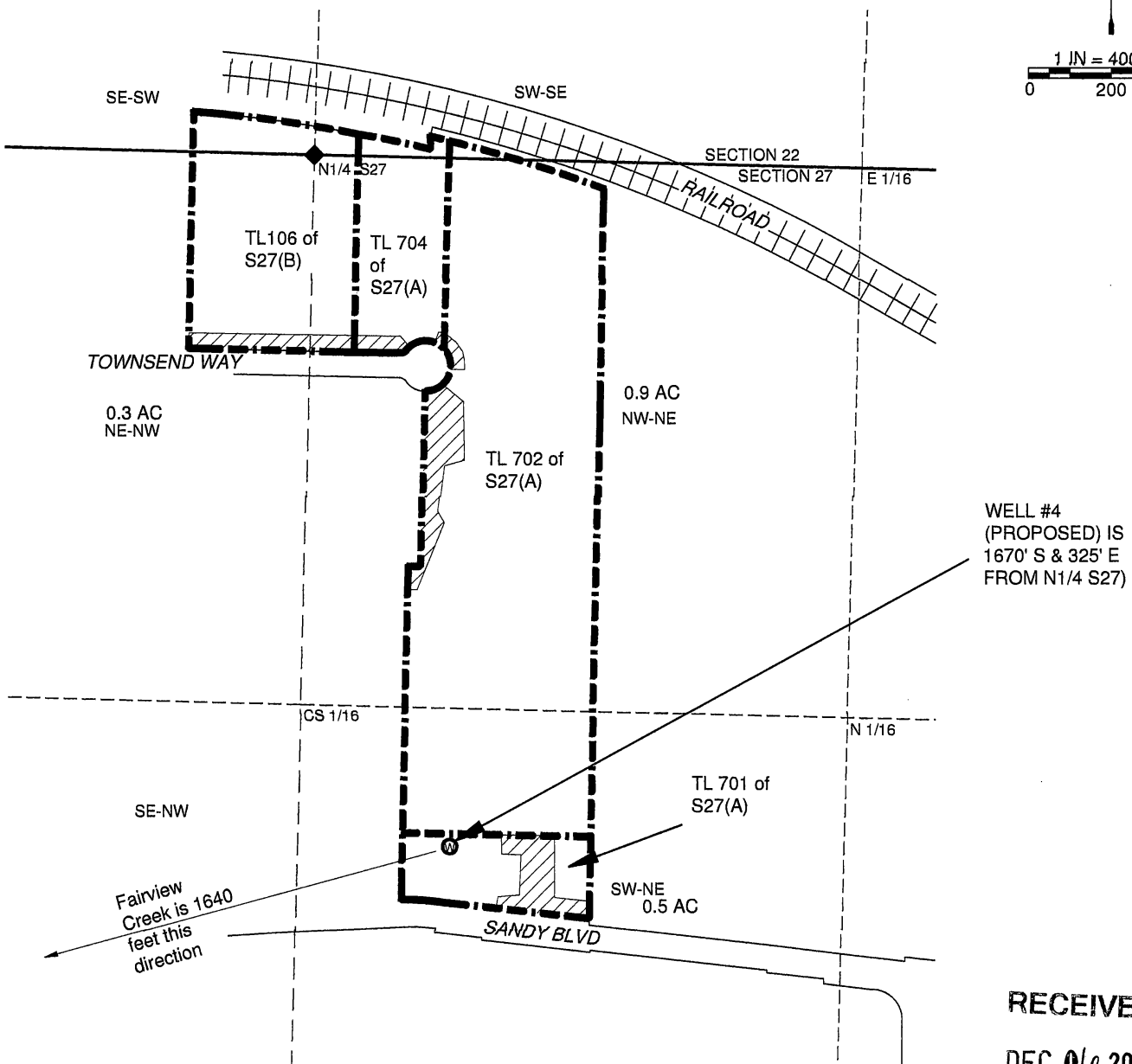


# Map For Groundwater Application

## Sections 22 and 27, T1N, R3E, Multnomah County



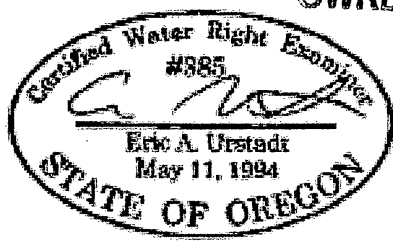
1 IN = 400 FT  
0 200 400



WELL #4  
(PROPOSED) IS  
1670' S & 325' E  
FROM N1/4 S27

RECEIVED  
DEC 06 2018

OWRD



- LEGEND**
- 1/4 CORNER
  - POINT OF APPROPRIATION
  - TAX LOT LINE
  - SECTION LINE
  - QUARTER-QUARTER LINE
  - IRRIGATION

**NOTES:**  
 THIS MAP IS NOT INTENDED TO PROVIDE LEGAL DIMENSIONS OR LOCATIONS OF PROPERTY OWNERSHIP LINES.  
 -PROPERTY LINES AND QUARTER-QUARTER LINES ARE BASED ON THE TAX ASSESSOR MAPS FOR SECTIONS 27(A) AND 27(B), T1N, R3E  
 -THE LOCATIONS OF WATER BODIES ARE FROM A UNITED STATES GEOLOGICAL SURVEY MAP OBTAINED FROM THEIR WEBSITE.  
 -THE POINT OF APPROPRIATION LOCATION WAS DETERMINED FROM AERIAL PHOTO INTERPRETATION USING A JULY 2018 IMAGE FROM GOOGLE EARTH PRO.  
 -WATER CONVEYANCE LINES SHALL BE ALL WITHIN THE PROPERTY AND THEREFORE ARE NOT SHOWN.

MAP BY:  
**ASPEN RURAL LAND CONSULTING**  
 ERIC URSTADT, PE, PLS  
 971-250-1520  
 Nov 2018  
 TownsendFarmsInc1F

G-18769