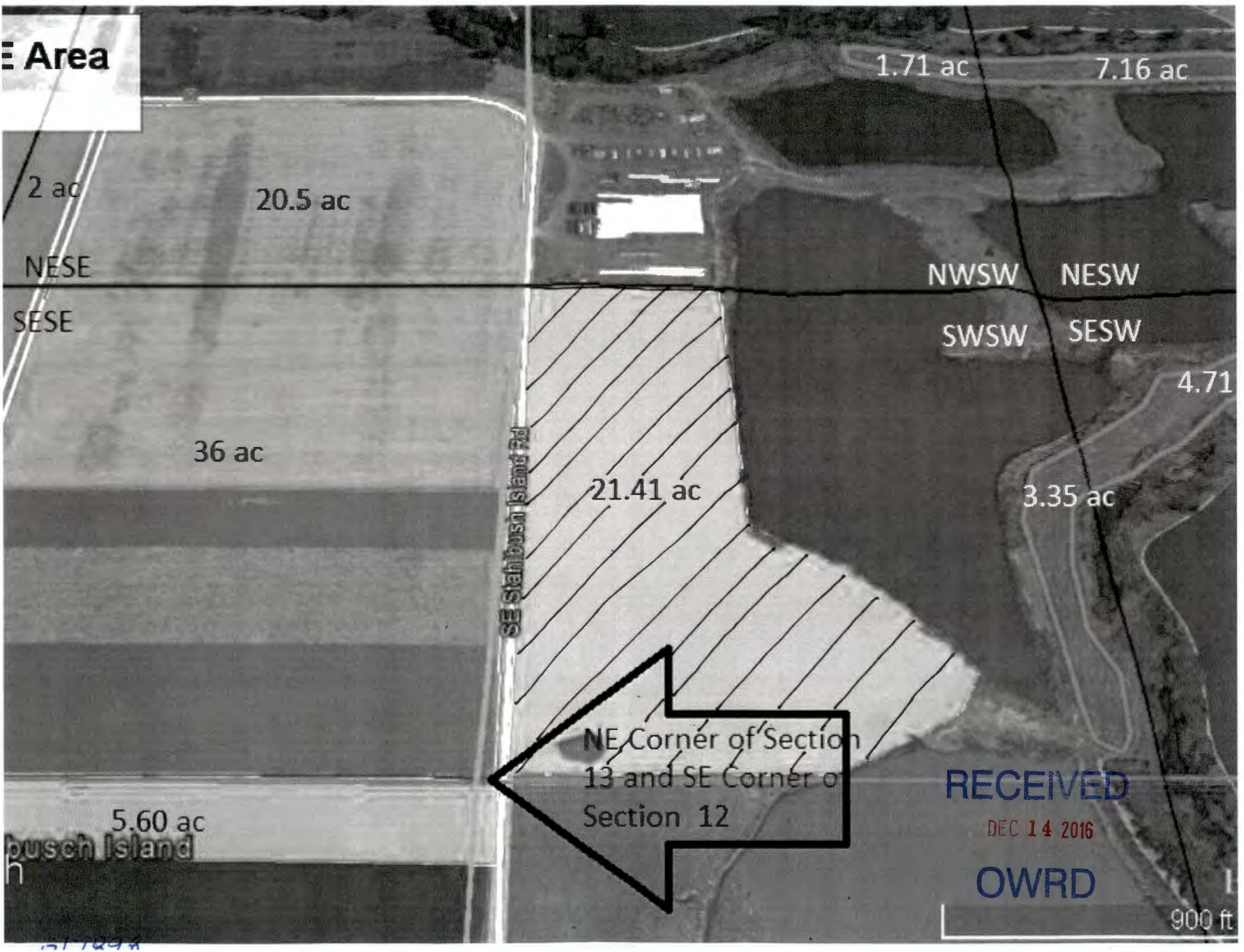


RECEIVED  
MAY 21 2018  
OWRD

G-17898



Area



2 ac

20.5 ac

1.71 ac

7.16 ac

NESE

NWSW

NESW

SESE

SWSW

SESW

36 ac

21.41 ac

4.71

3.35 ac

SE Stahibush Island Rd

NE Corner of Section 13 and SE Corner of Section 12

RECEIVED

DEC 14 2016

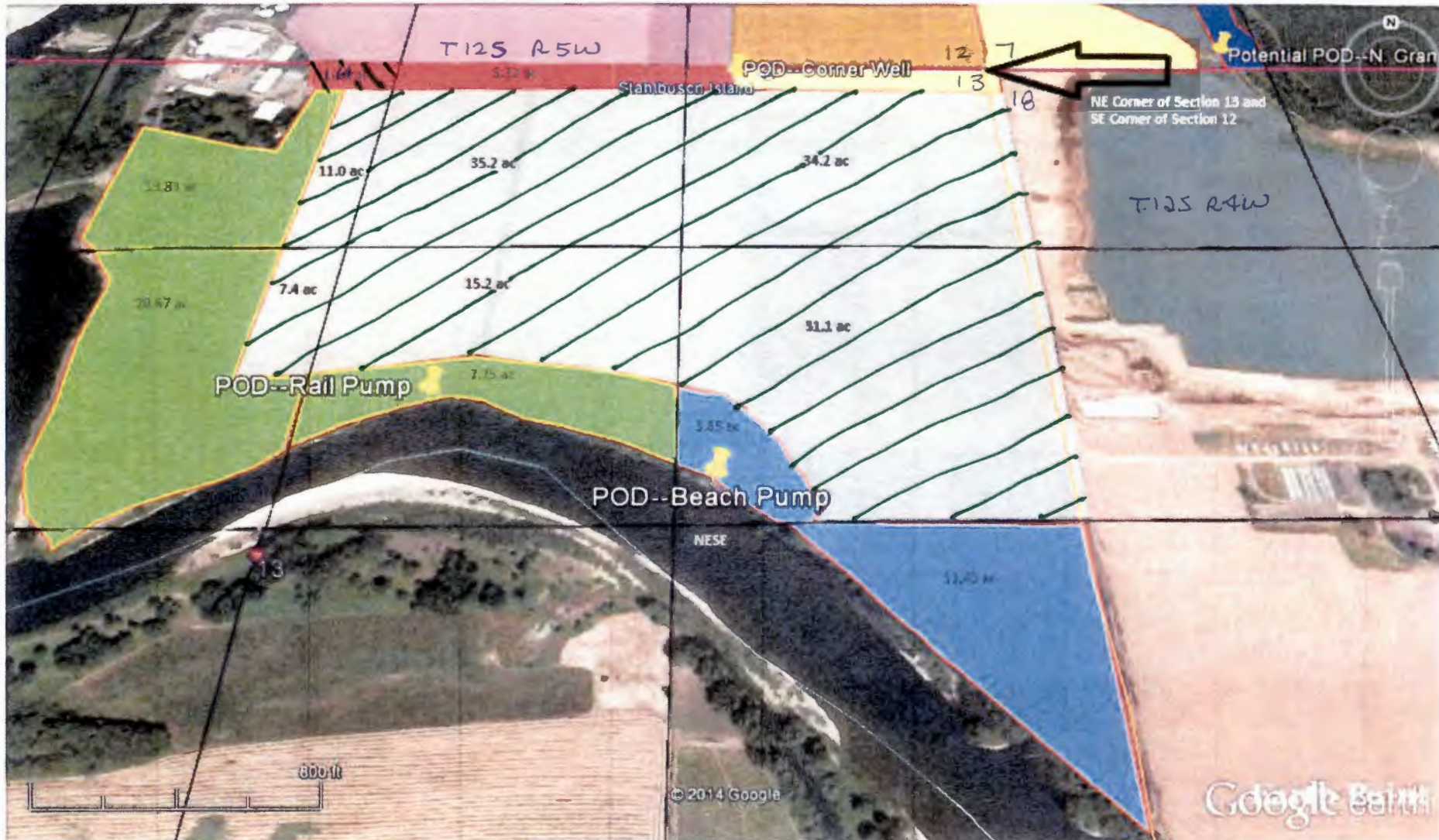
OWRD

900 ft

5.60 ac  
Stahibush Island

517294





1" = 400'

**RECEIVED**

SEP 22 2014

WATER RESOURCES DEPT  
SALEM, OREGON

- GREEN: Rail Pump: 2160 feet west and 1997 feet south from the NE corner of Section 13
- LIGHT BLUE: Beach Pump: 1151 feet west and 2353 feet south from the NE corner of Section 13
- DARK BLUE: Proposed N. Grandpa's POD: 1100 feet east and 91 feet north from the SW corner of Section 7
- HOT PINK: Corner Well: 1131 feet west and 168 feet south from the NE corner of Section 13
- YELLOW: Driveway Well: 1167 feet west and 970 feet north from the SE corner of Section 12
- TRANSPARENT PINK: GR 2727 where we are requesting supplemental irrigation
- TRANSPARENT ORANGE: GR 2732 where we are requesting supplemental irrigation
- TRANSPARENT WHITE: CERT 46117 where we are requesting supplemental irrigation

34.81  
AC

139.1  
AC

= 15

G-1789B