

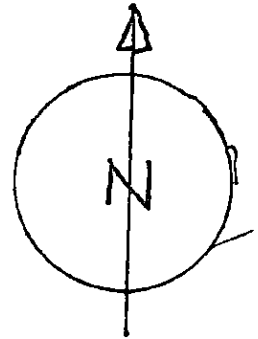
RECEIVED

MAY 10 2019

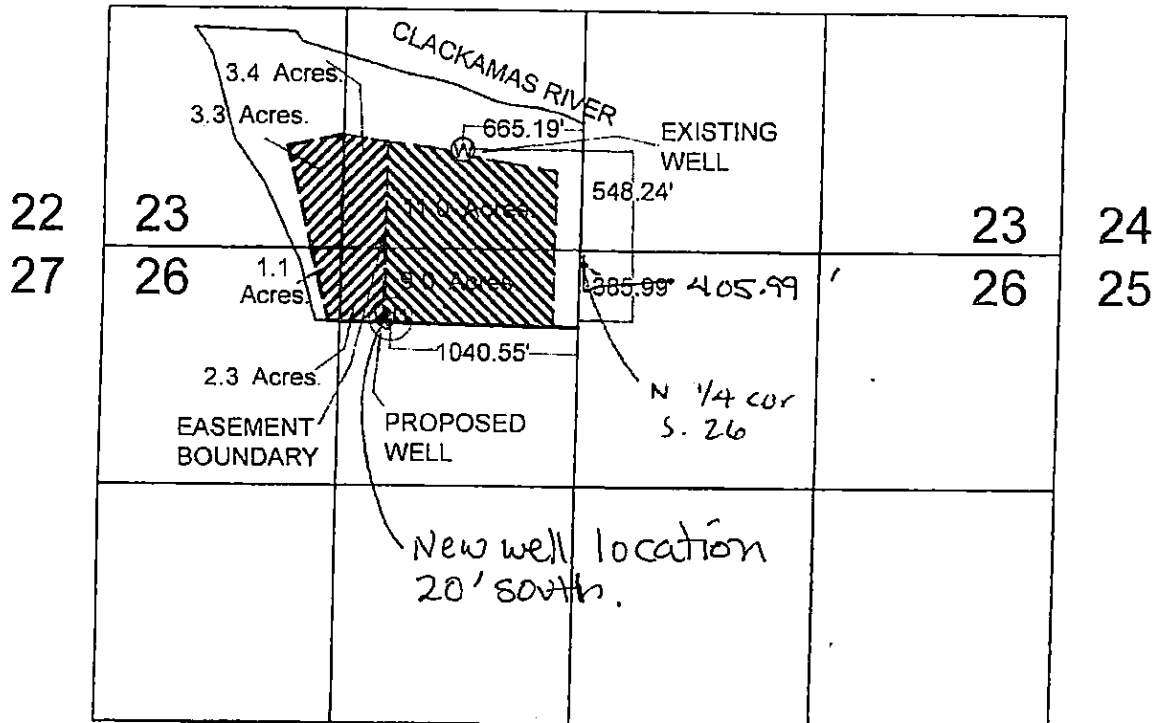
OWRD

T.2S.R3E.W.M.

Amended map Application  
G18729



RES  
AUG 27 2018  
OWRD



TAX LOT: 23E 23 00900

APPLICATION MAP  
SCALE 1" = 1000'

Proposed well located  $405.99'$   ~~$385.99'$~~  S,  $1040.55'$  W fr.  
N 1/4 cor. S. 26

G-18729