

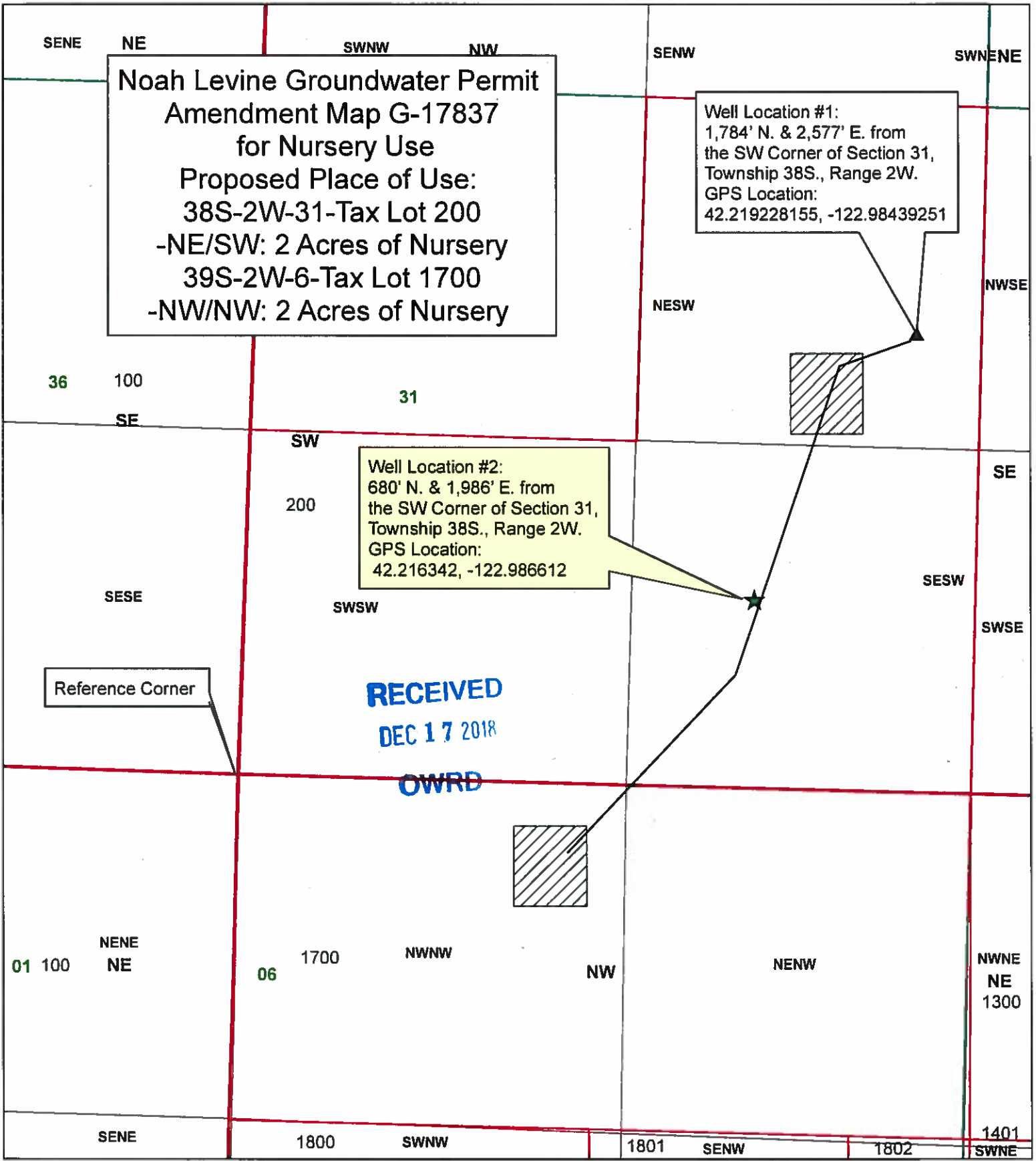
**Noah Levine Groundwater Permit
Amendment Map G-17837
for Nursery Use**
Proposed Place of Use:
 38S-2W-31-Tax Lot 200
 -NE/SW: 2 Acres of Nursery
 39S-2W-6-Tax Lot 1700
 -NW/NW: 2 Acres of Nursery

Well Location #1:
 1,784' N. & 2,577' E. from
 the SW Corner of Section 31,
 Township 38S., Range 2W.
GPS Location:
 42.219228155, -122.98439251

Well Location #2:
 680' N. & 1,986' E. from
 the SW Corner of Section 31,
 Township 38S., Range 2W.
GPS Location:
 42.216342, -122.986612

Reference Corner

RECEIVED
DEC 17 2018
OWRD



Legend

- ★ Well Location #2
- TL 200
- ▲ Well Location #1
- ▨ Place of Use

1 inch = 500 feet



**JACKSON COUNTY
WATER MASTER**

Prepared by Shavon Haynes
 with input from Noah Levine
 Jackson County cannot accept responsibility for
 errors, omissions, or positional accuracy.
 There are no warranties, expressed or implied.