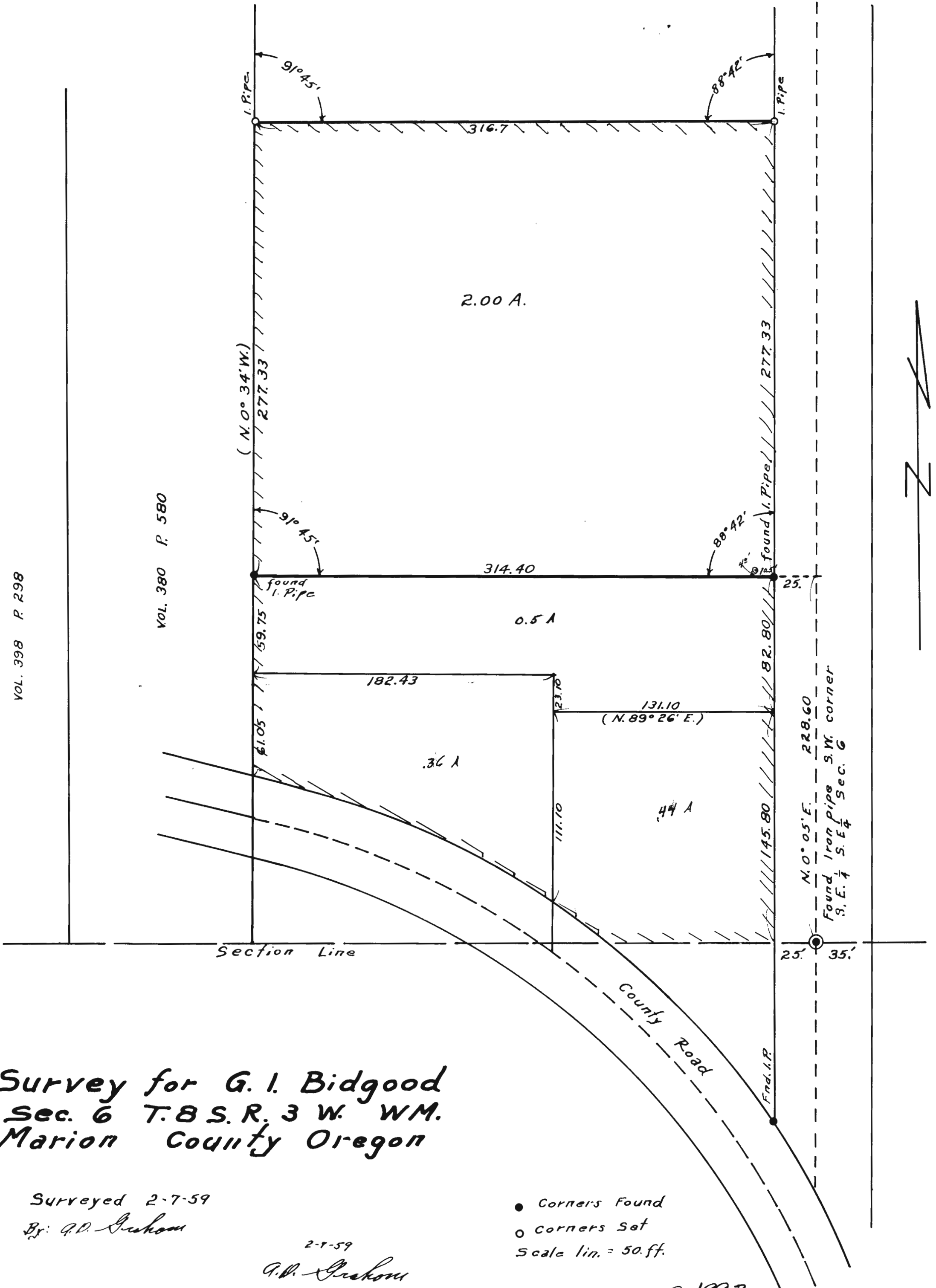


VOL. 398 P. 298

VOL. 380 P. 580



**Survey for G. I. Bidgood
 Sec. 6 T. 8 S. R. 3 W. WM.
 Marion County Oregon**

Surveyed 2-7-59
 By: G.D. Sukhom

2-9-59
 G.D. Sukhom

- Corners Found
- Corners Set
- Scale lin. = 50. ft.

Map No. 6-1993
 Permit No. 6-1832

