





Well location

Untitled layer

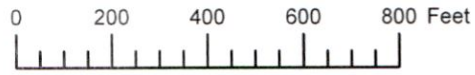
-  septic line and field
-  Transformer
-  Septic 2
-  New Well 1 Location

RECEIVED
DEC 23 2019
OWRD



13328 -

THIS MAP WAS PREPARED FOR ASSESSMENT PURPOSE ONLY

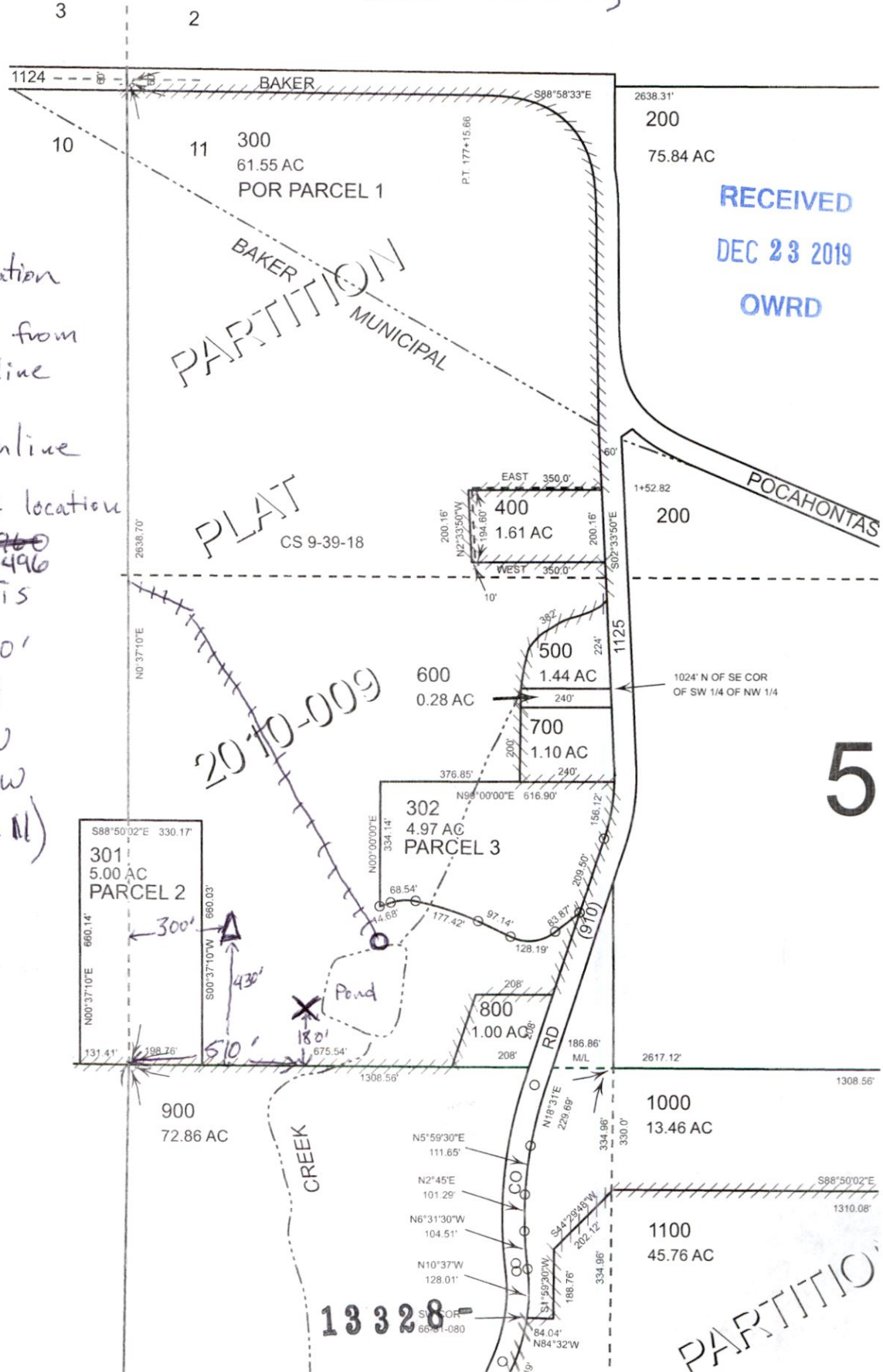


Section 11 T.9S. R.39E, W.M.
Baker County



- X - New well location
 - O - Existing pumps from pond to mainline
 - ≡ - Existing mainline
 - Δ - original Well location in permit G-~~17960~~ 17496
- (new well location is 510' east and 180' north of the SW corner of the SW quarter of the NW quarter of section 11)

SEE MAP 09S 39E 10



RECEIVED
DEC 23 2019
OWRD

5

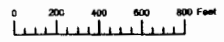
13328-

PARTITION

NOV 07 2014

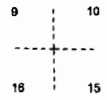
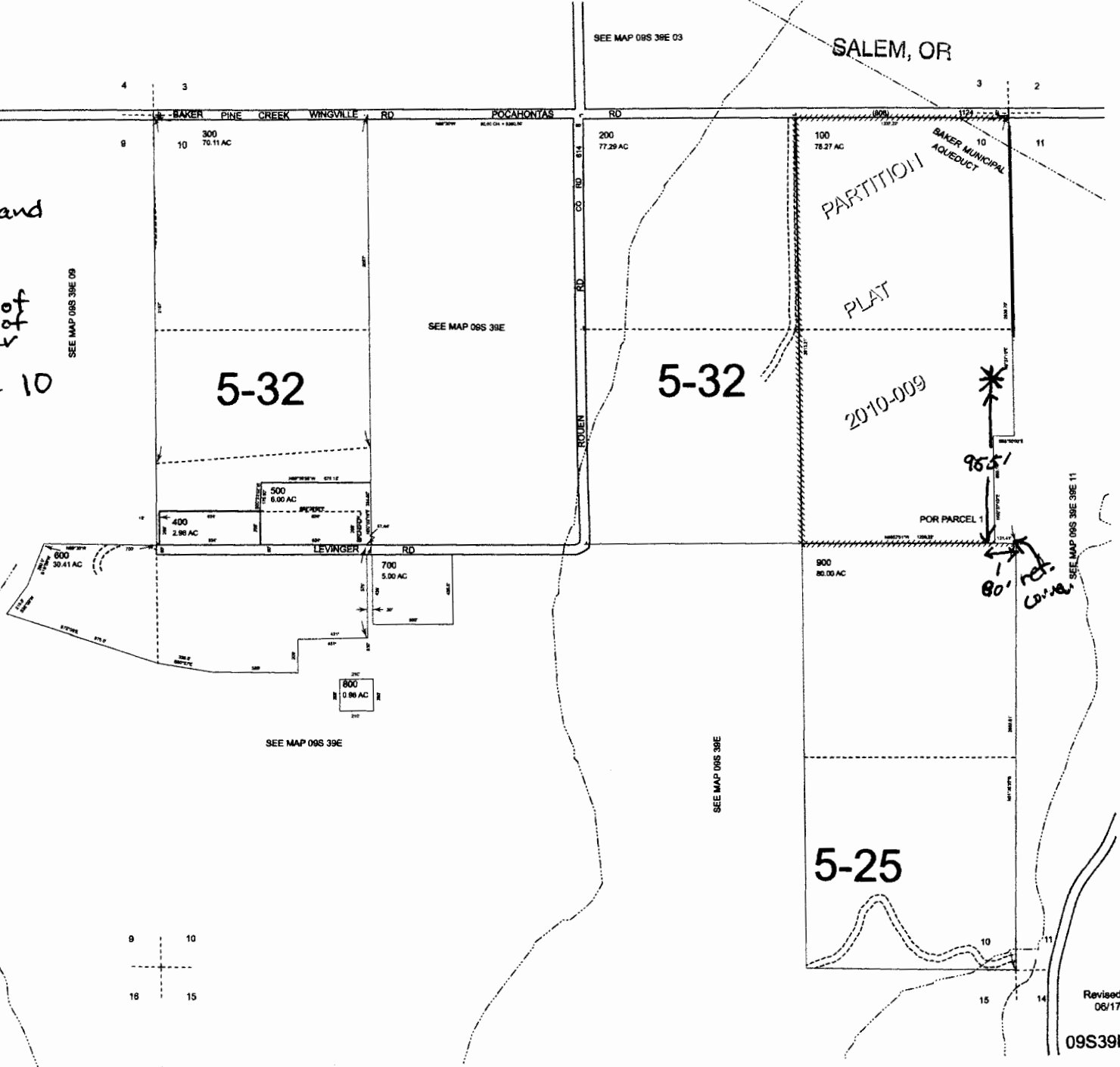
SECTION 10 T.9S. R.39E. W.M.
BAKER COUNTY
1" = 400'

THIS MAP WAS PREPARED FOR
ASSESSMENT PURPOSE ONLY



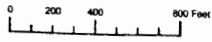
092214

* Well # 2 location
955' North of and
80' west of
SSE corner of
NEE quarter of
quarter
of section 10



09671-5

THIS MAP WAS PREPARED FOR ASSESSMENT PURPOSE ONLY



SECTION 11 T.9S. R.39E. W.M.
BAKER COUNTY
1" = 400'

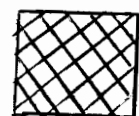
09S39E11

CANCELLED:
1400
300

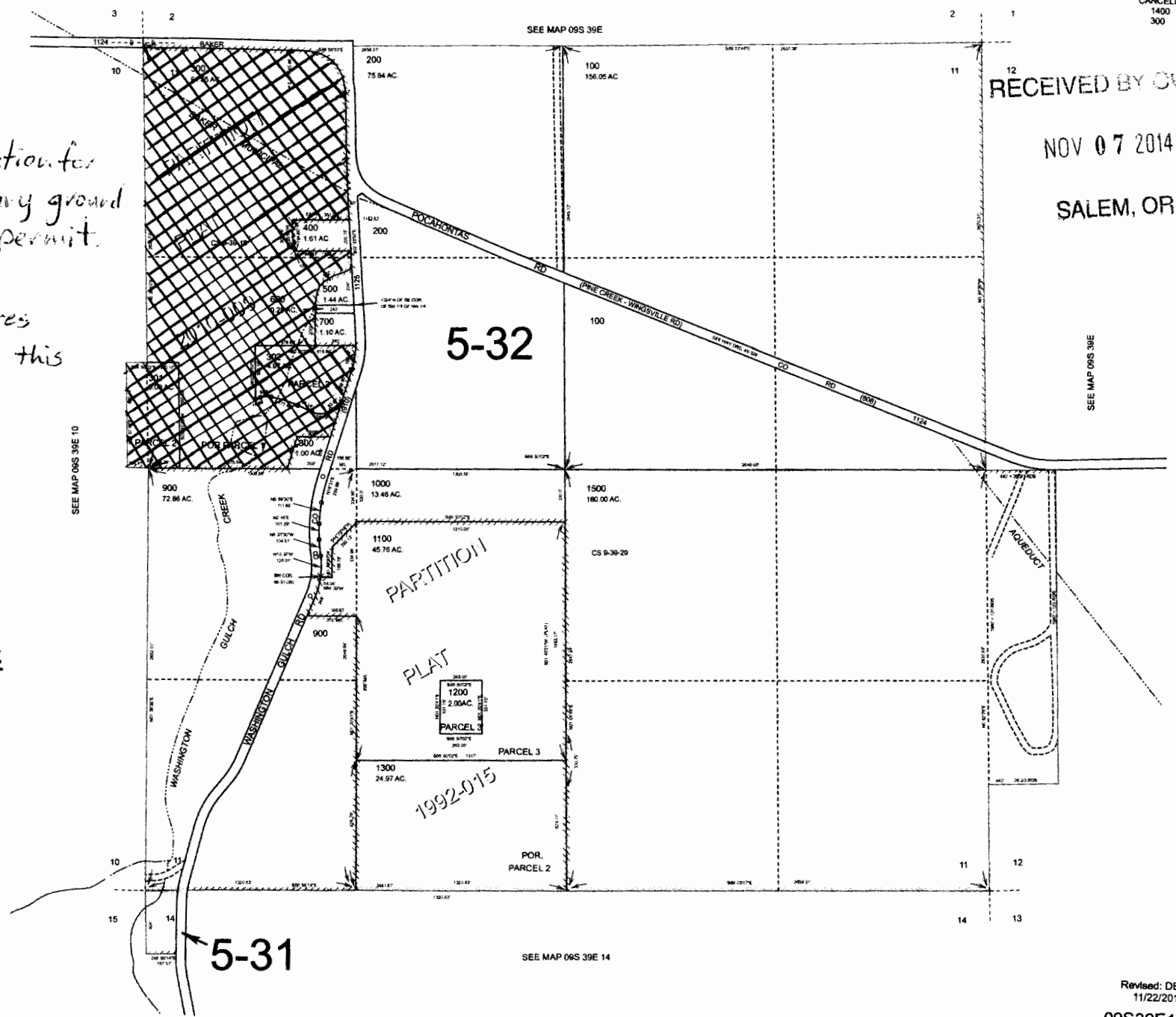
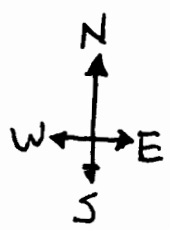
RECEIVED BY OWRD

NOV 07 2014

SALEM, OR

 Application for secondary ground water permit.

71.52 acres total for this map



SEE MAP 09S 39E 10

SEE MAP 09S 39E

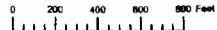
SEE MAP 09S 39E

SEE MAP 06S 39E 14

Revised: DBJ
11/22/2010

09S39E11

THIS MAP WAS PREPARED FOR ASSESSMENT PURPOSE ONLY



SECTION 10 T.9S. R.39E. W.M.
BAKER COUNTY
1" = 400'

RECEIVED BY OWRD


09S39E10


NOV 07 2014

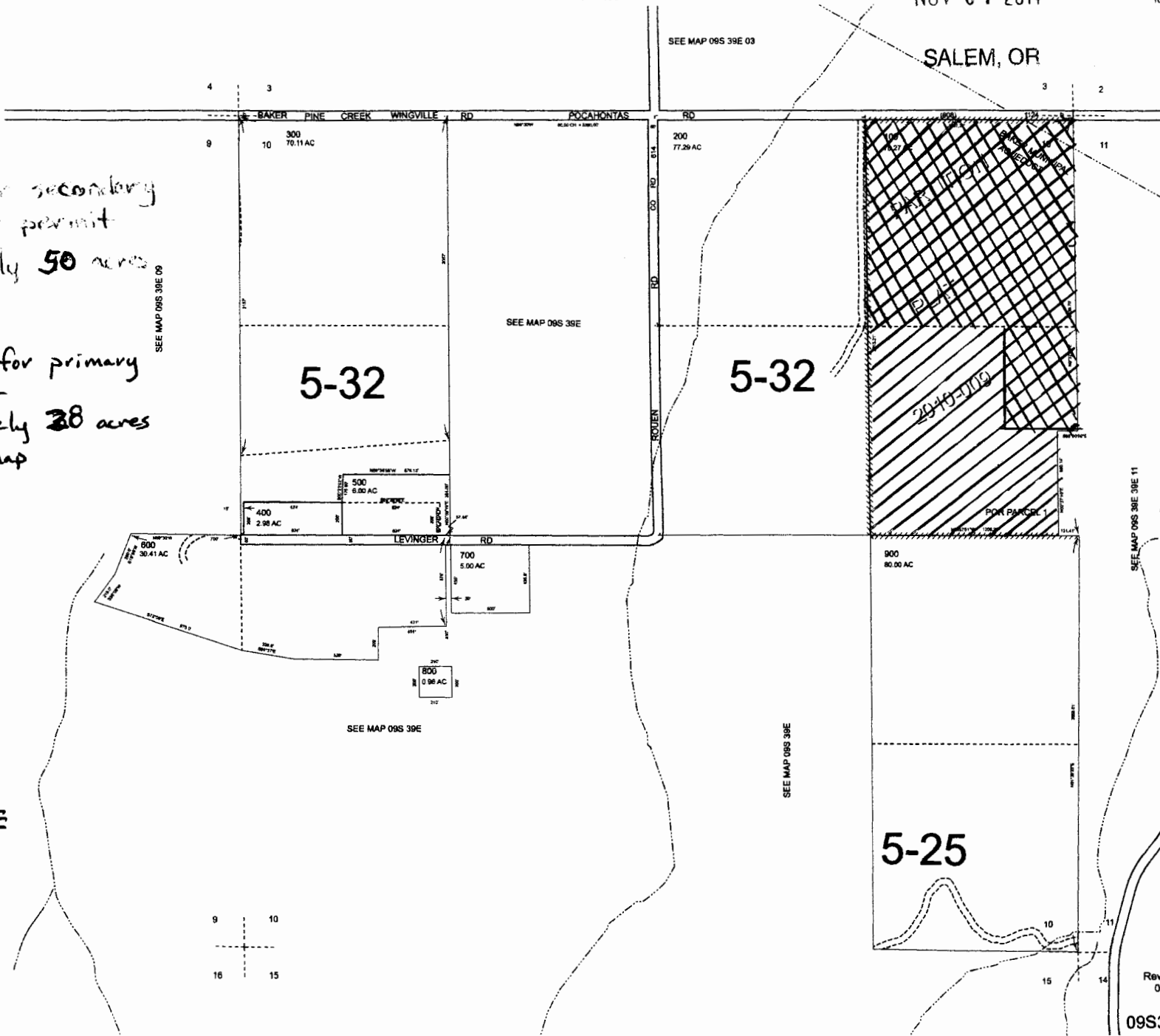
Cancelled
1000

09S39E10

SALEM, OR

 Application for secondary ground water permit approximately 50 acres this map

 Application for primary water right approximately 38 acres for this map



Revised: DBJ
06/17/2014

09S39E10