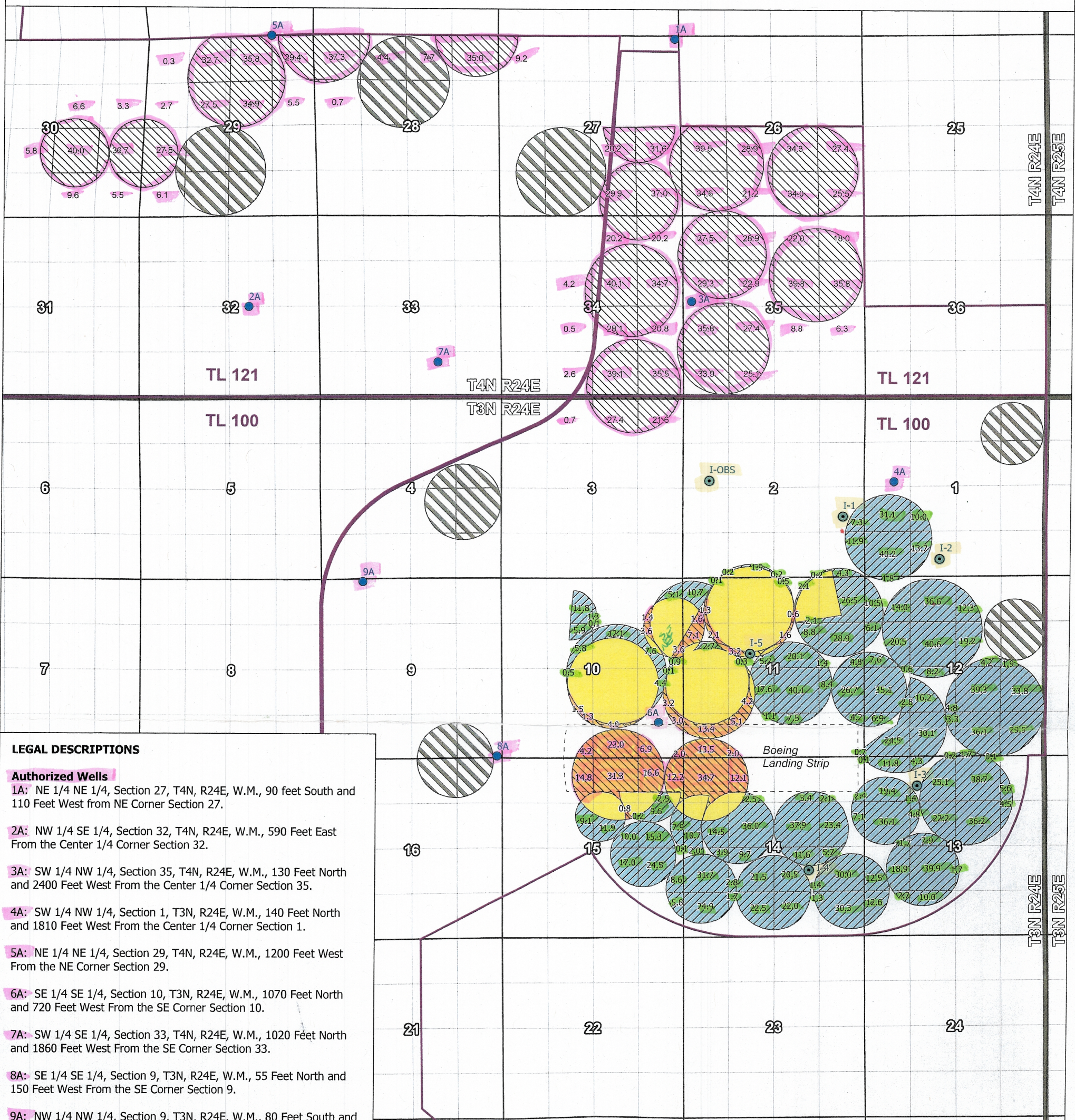


Permit Amendment Application G-13880 For Threemile Canyon Farms

Morrow County, Oregon
Township 4 North and 3 North, Range 24 East, W.M.

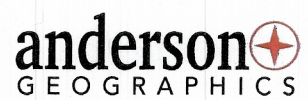


- LEGAL DESCRIPTIONS**
- Authorized Wells**
- 1A: NE 1/4 NE 1/4, Section 27, T4N, R24E, W.M., 90 feet South and 110 Feet West from NE Corner Section 27.
 - 2A: NW 1/4 SE 1/4, Section 32, T4N, R24E, W.M., 590 Feet East From the Center 1/4 Corner Section 32.
 - 3A: SW 1/4 NW 1/4, Section 35, T4N, R24E, W.M., 130 Feet North and 2400 Feet West From the Center 1/4 Corner Section 35.
 - 4A: SW 1/4 NW 1/4, Section 1, T3N, R24E, W.M., 140 Feet North and 1810 Feet West From the Center 1/4 Corner Section 1.
 - 5A: NE 1/4 NE 1/4, Section 29, T4N, R24E, W.M., 1200 Feet West From the NE Corner Section 29.
 - 6A: SE 1/4 SE 1/4, Section 10, T3N, R24E, W.M., 1070 Feet North and 720 Feet West From the SE Corner Section 10.
 - 7A: SW 1/4 SE 1/4, Section 33, T4N, R24E, W.M., 1020 Feet North and 1860 Feet West From the SE Corner Section 33.
 - 8A: SE 1/4 SE 1/4, Section 9, T3N, R24E, W.M., 55 Feet North and 150 Feet West From the SE Corner Section 9.
 - 9A: NW 1/4 NW 1/4, Section 9, T3N, R24E, W.M., 80 Feet South and 1200 Feet East From the NW Corner Section 9.
- Proposed Wells**
- Inland Well #1: NE 1/4 SE 1/4 Section 2, T3N, R24E, W.M.; 1777 feet North and 626 feet West from SE Corner Section 2.
 - Inland Well #2: SE 1/4 SW 1/4 Section 1, T3N, R24E, W.M.; 509 feet North and 2180 feet East from SW Corner Section 1.
 - Inland Well #3: NE 1/4 NW 1/4 Section 13, T3N, R24E, W.M.; 868 feet South and 1526 feet East from NW Corner Section 13.
 - Inland Well #4: NW 1/4 SE 1/4 Section 14, T3N, R24E, W.M.; 1953 feet North and 1628 feet West from SE Corner Section 14.
 - Inland Well #5: SE 1/4 NW 1/4 Section 11, T3N, R24E, W.M.; 2237 feet South and 1954 feet East from NW Corner Section 11.
 - Inland OBS Well: SW 1/4 NW 1/4 Section 2, T3N, R24E, W.M.; 2489 feet South and 770 feet East from NW Corner Section 2.

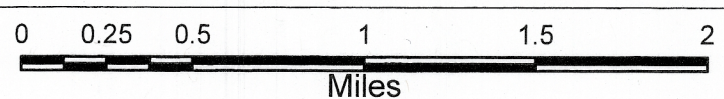
- Legend**
- Authorized Well (1A, 2A, etc.)
 - Proposed Well ("I" = Inland Well)
 - ▨ "From" Place of Use (Primary)
 - ▩ "To" Place of Use (Primary)
 - ▧ Remaining Place of Use (Supplemental) Not Involved in the Transfer
 - Remaining Place of Use for Authorized Primary Not Involved in the Transfer
 - ▭ Tax Lot (Morrow County)
 - ▭ Boeing Landing Strip

NOTE: The purpose of this map is to identify the location of the water right. It is not intended to provide information related to the location of property ownership boundary lines.

RECEIVED
DEC 19 2019
OWRD



Map Date: 11/20/2019 1:33 PM
Drawn By: Will Anderson (541) 656-8920
Spatial Reference: Name: NAD 1983 StatePlane Oregon North FIPS 3601 Feet



Scale: 1:35,689 (1 in = 2,974 ft)



13325

MORR 52130

Well 5 RECEIVED

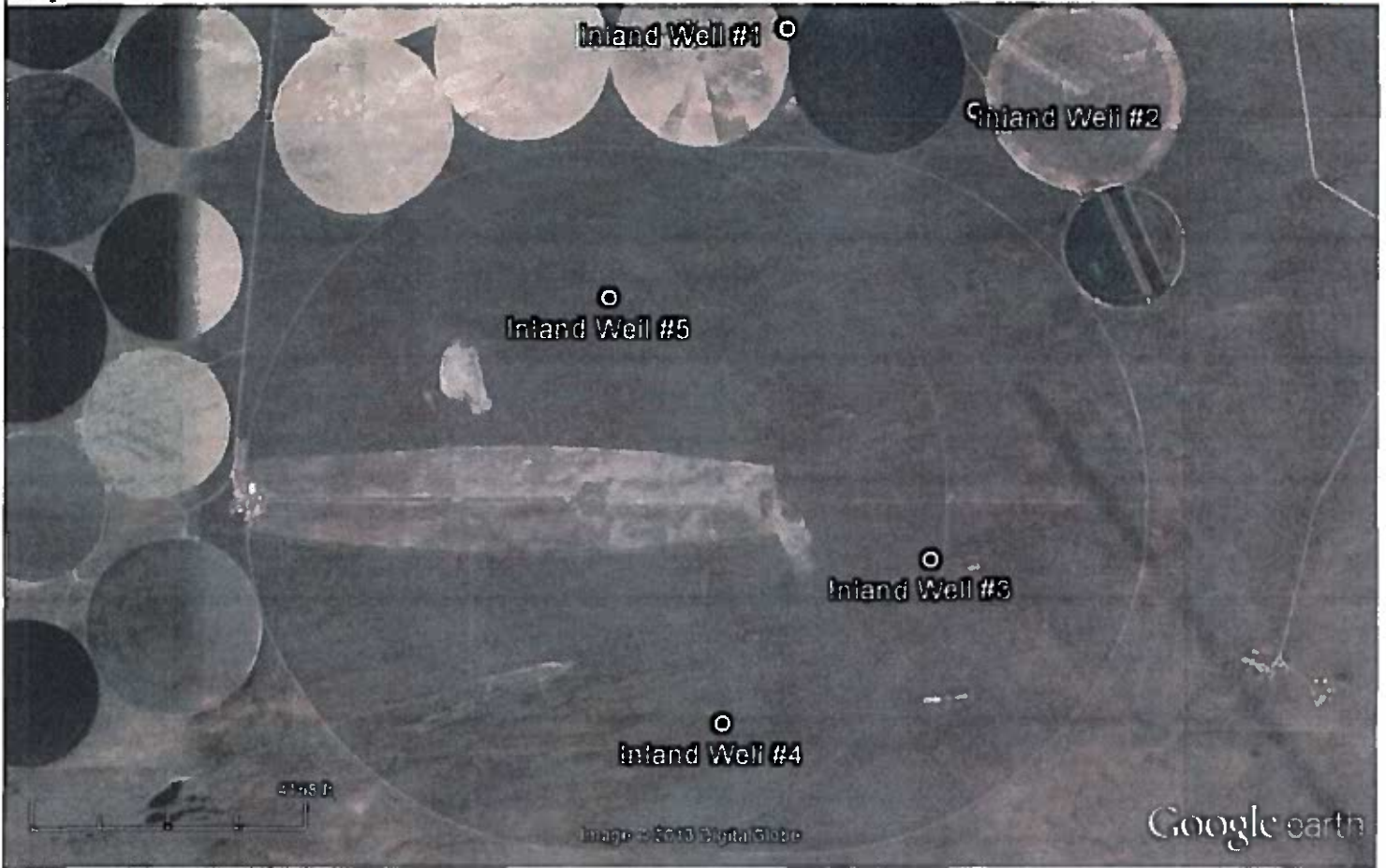
WATER SUPPLY WELL REPORT -
continuation page

WELL I.D. # L _____ REC 19 2019

START CARD # 1019188

OWRD

Map of well



RECEIVED BY OWRD

AUG 30 2013

SALEM, OR

13325 -

Well 4

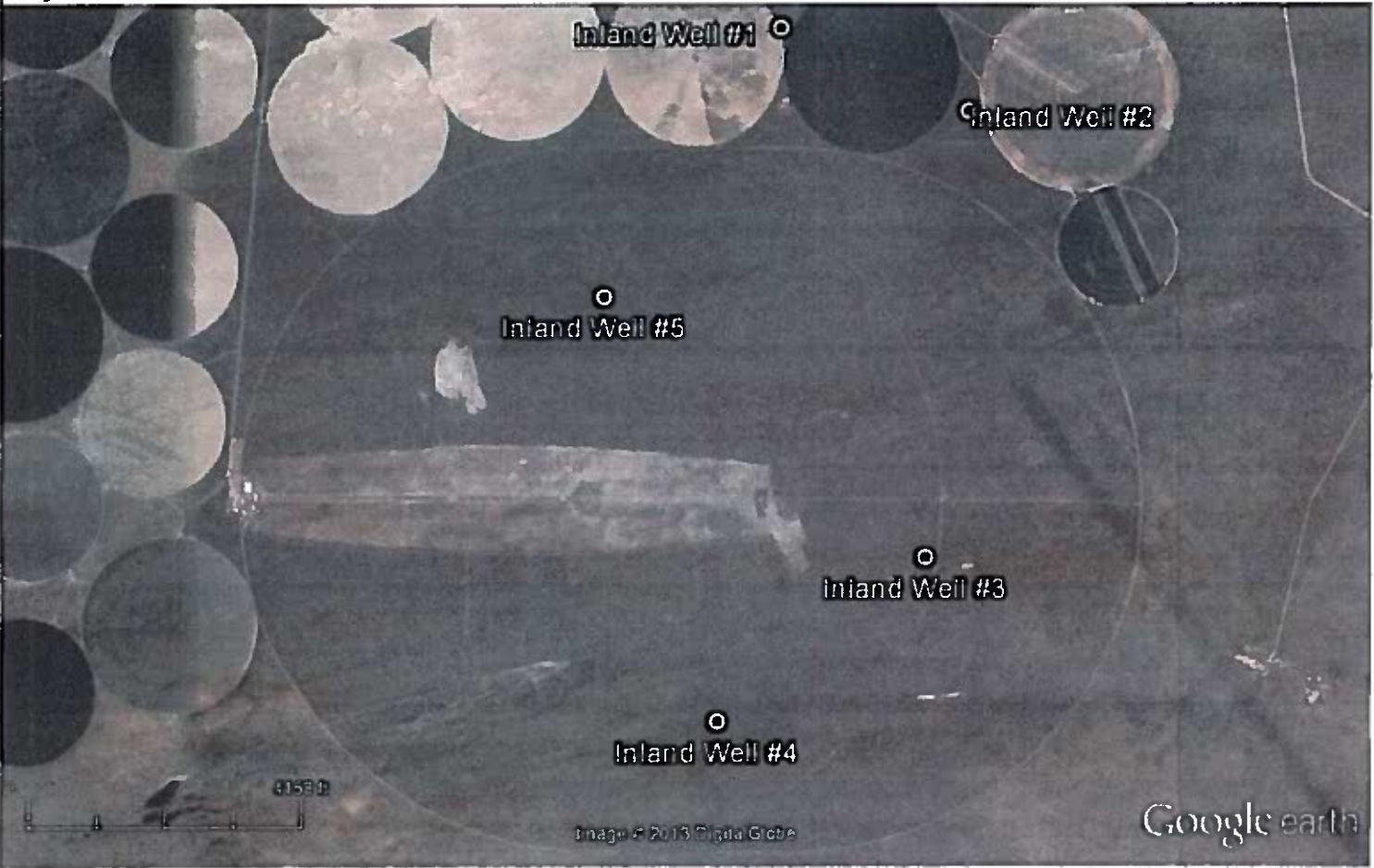
MORR 52131

WELL I.D. # L 96348

START CARD # 1019186

**WATER SUPPLY WELL REPORT -
continuation page**

Map of well



RECEIVED

DEC 19 2019

OWRD

RECEIVED BY OWRD

AUG 30 2013

SALEM, OR

13325

MORR 52132

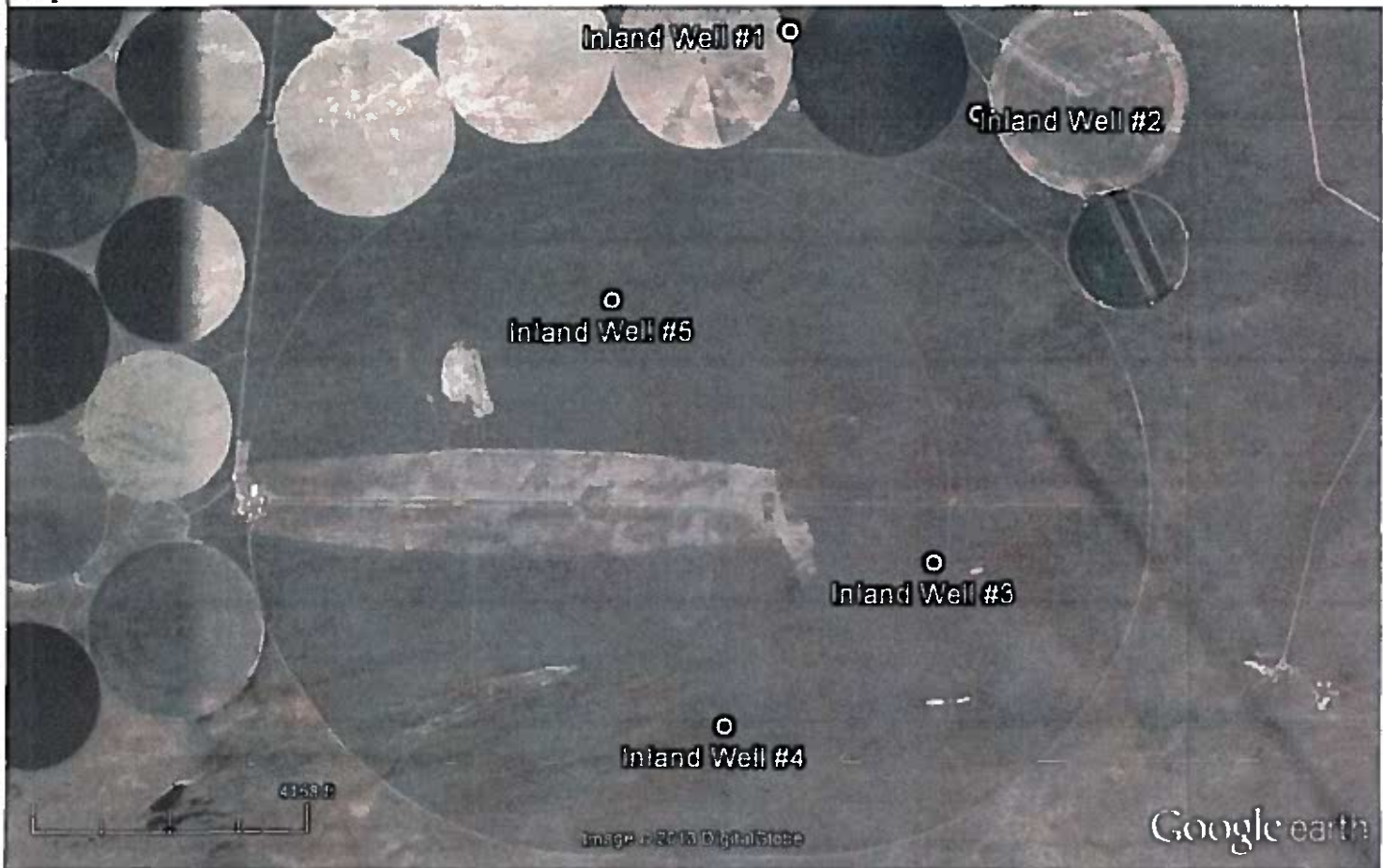
Well 3

WATER SUPPLY WELL REPORT -
continuation page

WELL I.D. # L 96347

START CARD # 1019114

Map of well



RECEIVED

DEC 19 2019

OWRD

RECEIVED BY OWRD

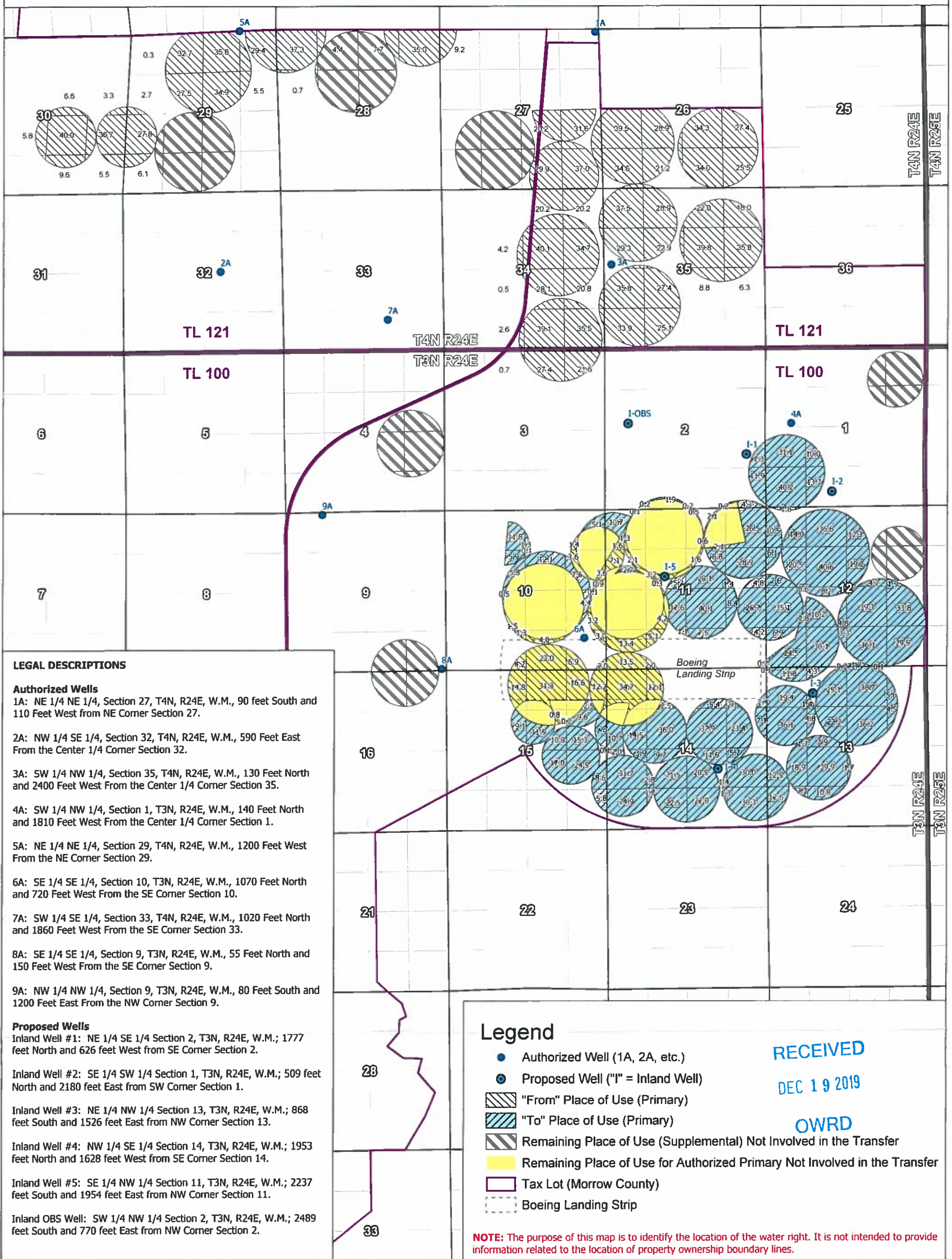
AUG 30 2013

SALEM, OR

13325

Permit Amendment Application G-13880 For Threemile Canyon Farms

Morrow County, Oregon
Township 4 North and 3 North, Range 24 East, W.M.



LEGAL DESCRIPTIONS

Authorized Wells

- 1A: NE 1/4 NE 1/4, Section 27, T4N, R24E, W.M., 90 feet South and 110 Feet West from NE Corner Section 27.
- 2A: NW 1/4 SE 1/4, Section 32, T4N, R24E, W.M., 590 Feet East From the Center 1/4 Corner Section 32.
- 3A: SW 1/4 NW 1/4, Section 35, T4N, R24E, W.M., 130 Feet North and 2400 Feet West From the Center 1/4 Corner Section 35.
- 4A: SW 1/4 NW 1/4, Section 1, T3N, R24E, W.M., 140 Feet North and 1810 Feet West From the Center 1/4 Corner Section 1.
- 5A: NE 1/4 NE 1/4, Section 29, T4N, R24E, W.M., 1200 Feet West From the NE Corner Section 29.
- 6A: SE 1/4 SE 1/4, Section 10, T3N, R24E, W.M., 1070 Feet North and 720 Feet West From the SE Corner Section 10.
- 7A: SW 1/4 SE 1/4, Section 33, T4N, R24E, W.M., 1020 Feet North and 1860 Feet West From the SE Corner Section 33.
- 8A: SE 1/4 SE 1/4, Section 9, T3N, R24E, W.M., 55 Feet North and 150 Feet West From the SE Corner Section 9.
- 9A: NW 1/4 NW 1/4, Section 9, T3N, R24E, W.M., 80 Feet South and 1200 Feet East From the NW Corner Section 9.

Proposed Wells

- Inland Well #1: NE 1/4 SE 1/4 Section 2, T3N, R24E, W.M.; 1777 feet North and 626 feet West from SE Corner Section 2.
- Inland Well #2: SE 1/4 SW 1/4 Section 1, T3N, R24E, W.M.; 509 feet North and 2180 feet East from SW Corner Section 1.
- Inland Well #3: NE 1/4 NW 1/4 Section 13, T3N, R24E, W.M.; 868 feet South and 1526 feet East from NW Corner Section 13.
- Inland Well #4: NW 1/4 SE 1/4 Section 14, T3N, R24E, W.M.; 1953 feet North and 1628 feet West from SE Corner Section 14.
- Inland Well #5: SE 1/4 NW 1/4 Section 11, T3N, R24E, W.M.; 2237 feet South and 1954 feet East from NW Corner Section 11.
- Inland OBS Well: SW 1/4 NW 1/4 Section 2, T3N, R24E, W.M.; 2489 feet South and 770 feet East from NW Corner Section 2.

Legend

- Authorized Well (1A, 2A, etc.)
- Proposed Well ("I" = Inland Well)
- ▨ "From" Place of Use (Primary)
- ▨ "To" Place of Use (Primary)
- ▨ Remaining Place of Use (Supplemental) Not Involved in the Transfer
- Remaining Place of Use for Authorized Primary Not Involved in the Transfer
- ▭ Tax Lot (Morrow County)
- - - Boeing Landing Strip

NOTE: The purpose of this map is to identify the location of the water right. It is not intended to provide information related to the location of property ownership boundary lines.

RECEIVED

DEC 19 2019

OWRD



Map Date: 11/20/2019 1:33 PM
 Drawn By:
 Will Anderson (541) 656-8920
 Spatial Reference:
 Name: NAD 1983 StatePlane Oregon North FIPS 3601 Feet



Scale: 1:35,689 (1 in = 2,974 ft)



13325

INLAND LAND CO., LLC
 AMENDED GROUND WATER APPLICATION G-14827 MAP
 MORROW COUNTY, OREGON T4N, R24E WM

S 1/4 SECTION 19

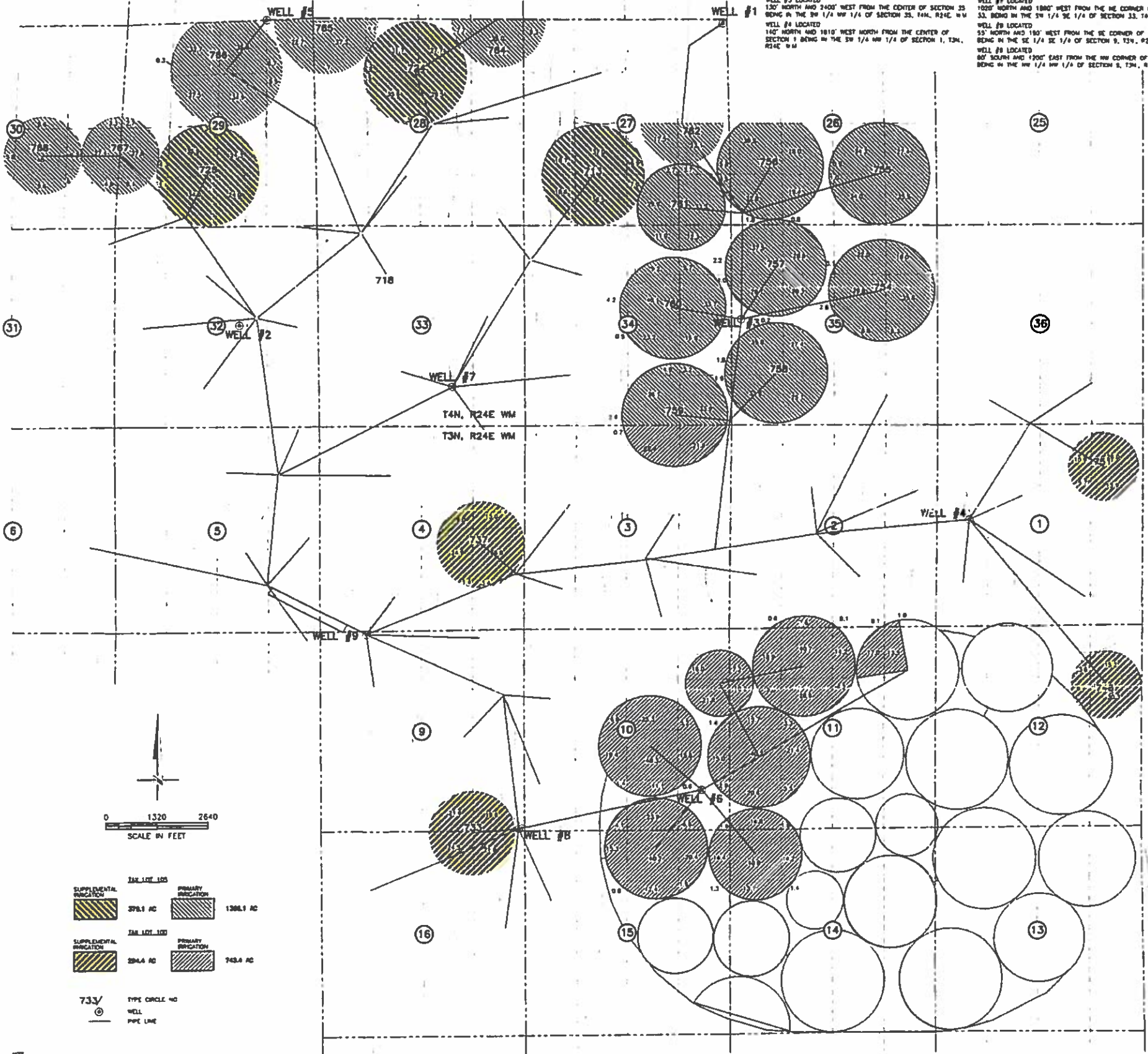
S 1/4 SECTION 20

S 1/4 SECTION 21

S 1/4 SECTION 22

WELL #1 LOCATED 80' SOUTH AND 110' WEST FROM THE NE CORNER OF SECTION 27, BEING IN THE NE 1/4 NE 1/4 OF SECTION 27, T4N, R24E WM
 WELL #2 LOCATED 390' EAST FROM THE CENTER OF SECTION 33 BEING IN THE NW 1/4 SE 1/4 OF SECTION 32, T4N, R24E WM
 WELL #3 LOCATED 130' NORTH AND 340' WEST FROM THE CENTER OF SECTION 23 BEING IN THE SW 1/4 NW 1/4 OF SECTION 23, T4N, R24E WM
 WELL #4 LOCATED 140' NORTH AND 1810' WEST FROM THE CENTER OF SECTION 1 BEING IN THE SW 1/4 NW 1/4 OF SECTION 1, T3N, R24E WM

WELL #5 LOCATED 1200' WEST FROM THE NE CORNER OF SECTION 29, BEING IN THE NE 1/4 NE 1/4 OF SECTION 29, T4N, R24E WM
 WELL #6 LOCATED 1070' NORTH AND 770' WEST FROM THE SE CORNER OF SECTION 10, BEING IN THE SE 1/4 SE 1/4 OF SECTION 10, T3N, R24E WM
 WELL #7 LOCATED 1020' NORTH AND 1880' WEST FROM THE NE CORNER OF SECTION 33, BEING IN THE SW 1/4 SE 1/4 OF SECTION 33, T4N, R24E WM
 WELL #8 LOCATED 55' NORTH AND 150' WEST FROM THE SE CORNER OF SECTION 8, BEING IN THE SE 1/4 SE 1/4 OF SECTION 8, T3N, R24E WM
 WELL #9 LOCATED 80' SOUTH AND 1200' EAST FROM THE NW CORNER OF SECTION 8, BEING IN THE NW 1/4 NW 1/4 OF SECTION 8, T3N, R24E WM



	TAX LOT 103	378.1 AC	PRIMARY INDICATION	1368.1 AC
	TAX LOT 102	284.4 AC	PRIMARY INDICATION	743.4 AC
	733/	TYPE CIRCLE NO		
		WELL		
		PIPE LINE		

NOTE: THE PURPOSE OF THIS MAP IS TO VERIFY THE APPROXIMATE LOCATION OF THE WELLS SHOWN. IT IS NOT INTENDED TO PROVIDE INFORMATION RELATIVE TO THE LOCATION OF PROPERTY OWNERSHIP BOUNDARY LINES.

SCM Consultants, Inc. Architects & Engineers
 Kennewick, WA 99336

WELL
 PIPE LINE

NOTE: THE PURPOSE OF THIS MAP IS TO VERIFY THE APPROXIMATE LOCATION OF THE WELLS SHOWN. IT IS NOT INTENDED TO PROVIDE INFORMATION RELATIVE TO THE LOCATION OF PROPERTY OWNERSHIP BOUNDARY LINES.

SCM Consultants, Inc. Architects & Engineers
 Kennewick, WA 99336

WELL
 PIPE LINE

NOTE: THE PURPOSE OF THIS MAP IS TO VERIFY THE APPROXIMATE LOCATION OF THE WELLS SHOWN. IT IS NOT INTENDED TO PROVIDE INFORMATION RELATIVE TO THE LOCATION OF PROPERTY OWNERSHIP BOUNDARY LINES.

SCM Consultants, Inc. Architects & Engineers
 Kennewick, WA 99336

WELL
 PIPE LINE

NOTE: THE PURPOSE OF THIS MAP IS TO VERIFY THE APPROXIMATE LOCATION OF THE WELLS SHOWN. IT IS NOT INTENDED TO PROVIDE INFORMATION RELATIVE TO THE LOCATION OF PROPERTY OWNERSHIP BOUNDARY LINES.

SCM Consultants, Inc. Architects & Engineers
 Kennewick, WA 99336

WELL
 PIPE LINE

NOTE: THE PURPOSE OF THIS MAP IS TO VERIFY THE APPROXIMATE LOCATION OF THE WELLS SHOWN. IT IS NOT INTENDED TO PROVIDE INFORMATION RELATIVE TO THE LOCATION OF PROPERTY OWNERSHIP BOUNDARY LINES.

SCM Consultants, Inc. Architects & Engineers
 Kennewick, WA 99336

19325 - RECEIVED
 DEC 19 2019
 OWRD